



CITY OF FERNDALE SHORELINE MASTER PROGRAM (SMP)

MARCH 13, 2019
PLANNING COMMISSION

PURPOSE AND INTENT

- SMP BACKGROUND AND OVERVIEW
- WHAT IS THE SMP
- SMP PURPOSE
- WHAT DOES SMP DO?
- SCOPE OF UPDATE
- SMP ISSUES
- REVIEW OPTIONS FOR PC
- TIMELINE



City of Ferndale



2006 Proposed Shoreline Land Use Designations

Legend

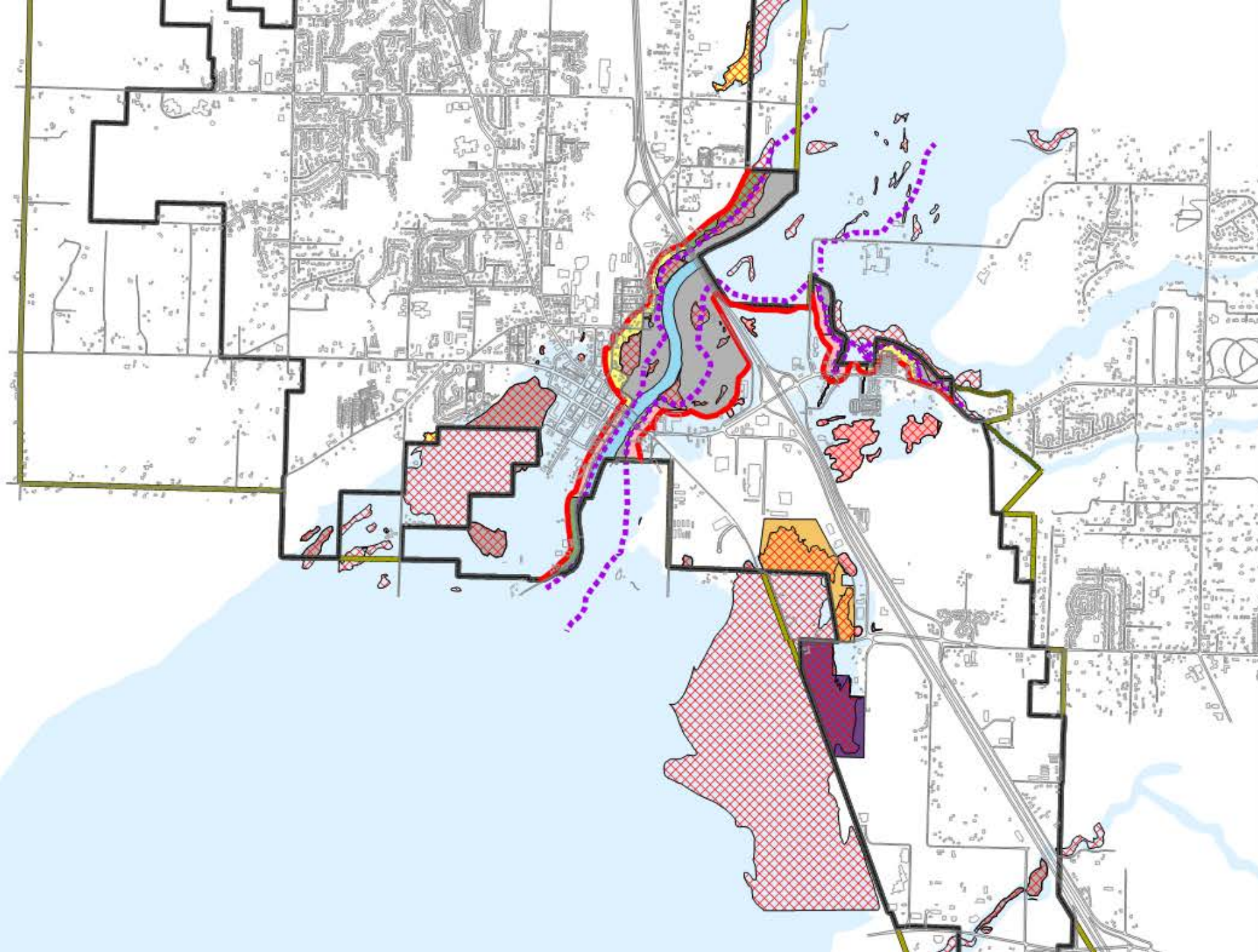
- Shoreline Jurisdiction
- City Limits
- Urban Growth Area
- Floodway (Shoreline)
- Wetland in 100-year Floodplain
- Aquatic
- Conservancy
- General Commercial Conservancy
- Manufacturing Conservancy
- Residential
- Rural
- Urban
- 100-year Floodplain (Shoreline Floodplain)



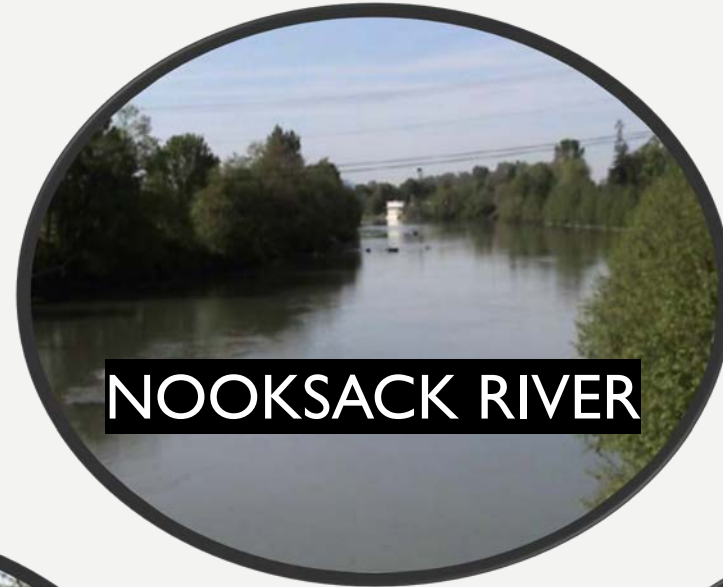
2,100 1,050 0 2,100 Feet

1 inch = 2,000 feet

Draft: Map Print Date: August 2006
Content Approved by Ferndale City Council May 2005
Content Revised August 10, 2006



WHAT IS THE SMP?



NOOKSACK RIVER

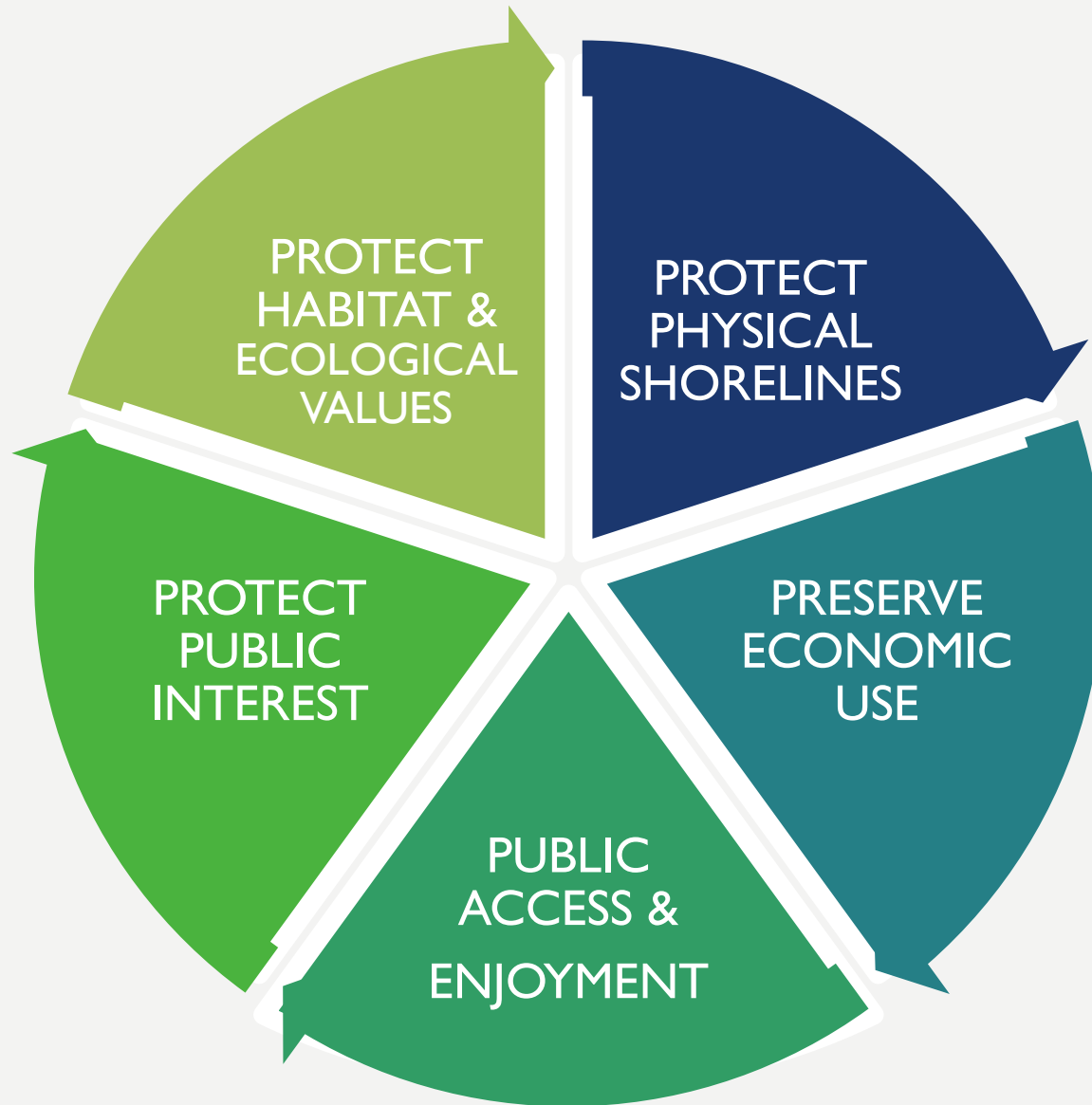


**WETLANDS IN 100-
YEAR FLOODPLAIN**



CREEKS

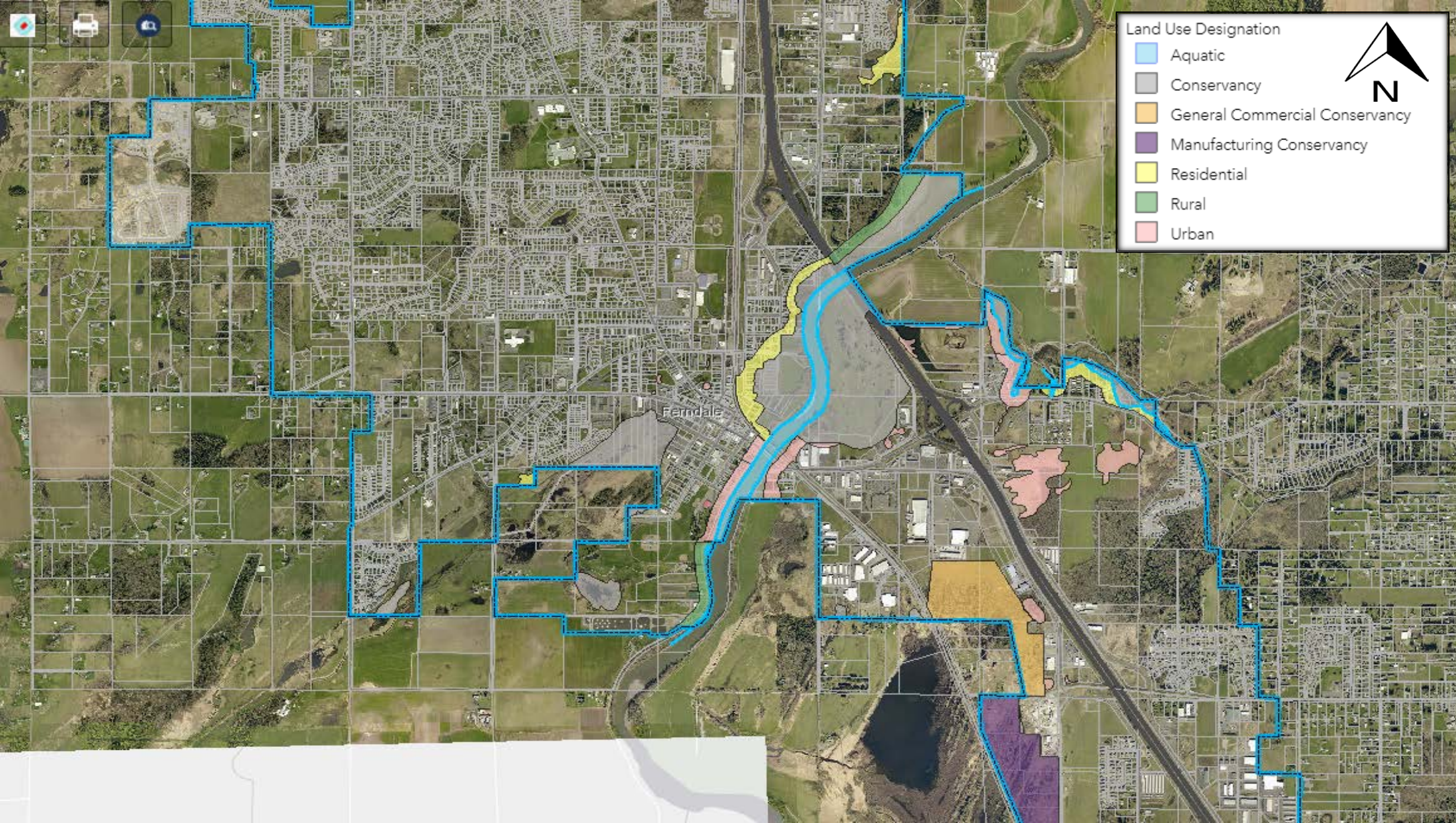
PURPOSE OF SMP

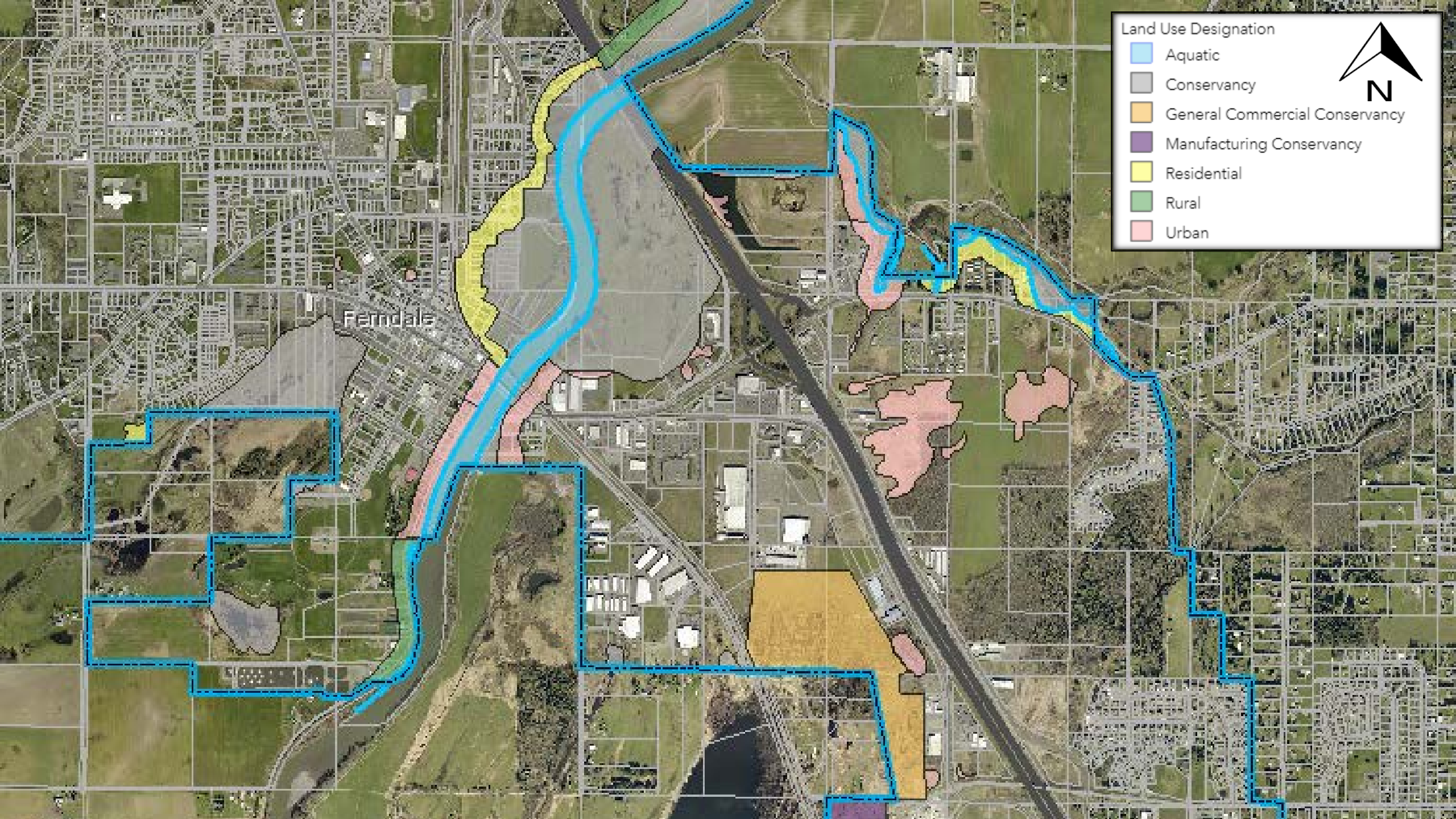


WHAT DOES THE SMP DO?

Table of uses by shoreline environment designation	URBAN	RESIDENTIAL	CONSERVANCY	AQUATIC	RURAL
Aquaculture	C	C	C	C	C
Boating Facilities	C	C	C	C	C
Commercial Development	P	C	C	X see "Note" below	X
Forestry	X	X	C	C	X
Industrial Development	P	X	X	X see "Note" below	X
In-Stream Structures	C	C	C	C	C
Mining	C	C	C	X	C
Piers, Docks, and Floats	C	C	C	C	C
Recreational Development	P	P	P	C	X
Residential Development	P	P	P	X see "Note" below	X
Roads and Railways	P	P	C	C	C
Signs	P	P	P	C	C
Solid Waste	X	X	X	X	X
Utilities	P	P	P	C	C
Shoreline Modifications					
Dredging	C	C	C	C	C
Grading	P	P	P	C	C
Shoreline Stabilization	C	C	C	C	C

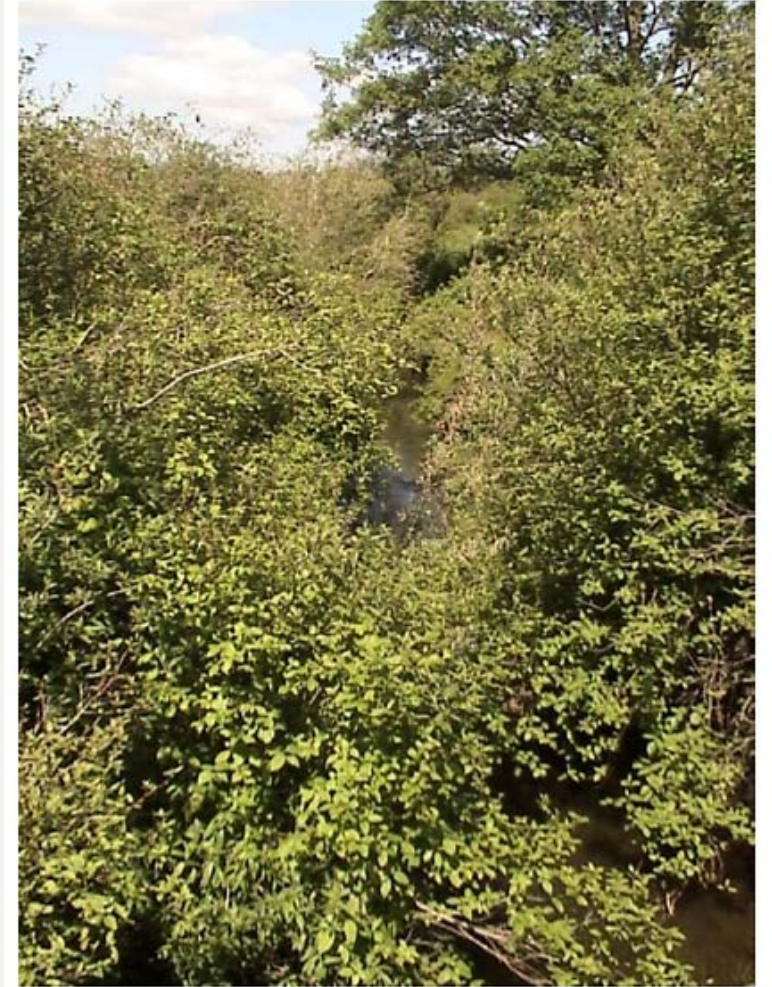
P= PERMITTED C = CONDITIONAL X = PROHIBITED





WHEN WAS THE SMP ADOPTED?

- THE 1983 VERSION WAS UPDATED FROM 1999 - 2008 (EXTENSIVE MULTI/YEAR PROCESS)
- MINOR UPDATE IN 2017
- STATE UPDATE REQUIRED IN 2020



10-Mile Creek

SMP UPDATE SCOPE

SIMPLIFY

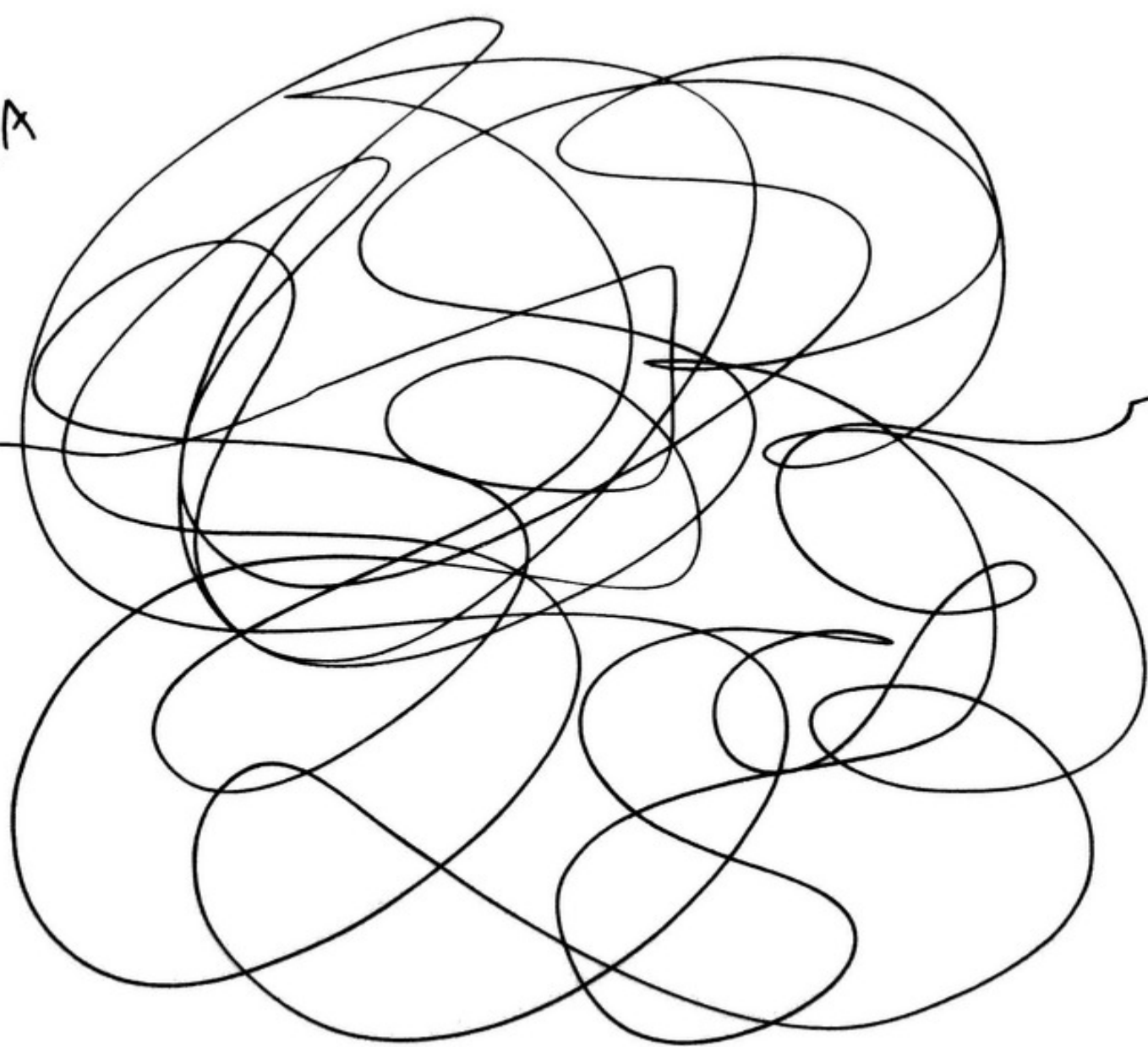
EASIER TO NAVIGATE

FERNDALDE SPECIFIC

ADDRESS STATE REGULATIONS

UPDATE WILL NOT REDUCE
ENVIRONMENTAL PROTECTIONS

Point A

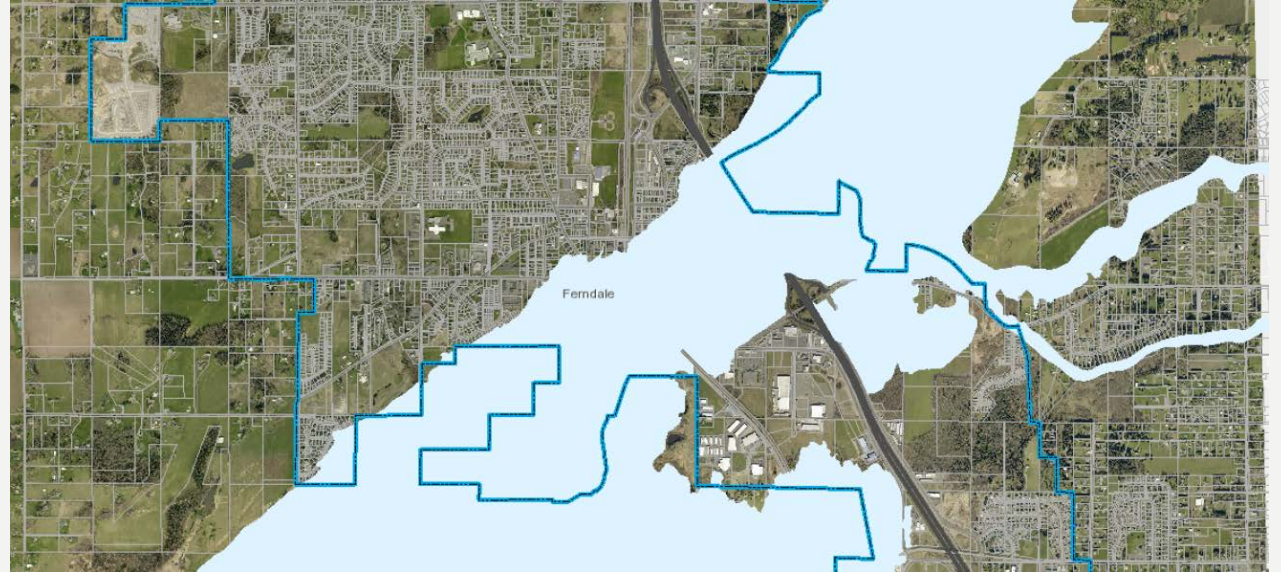


Point B

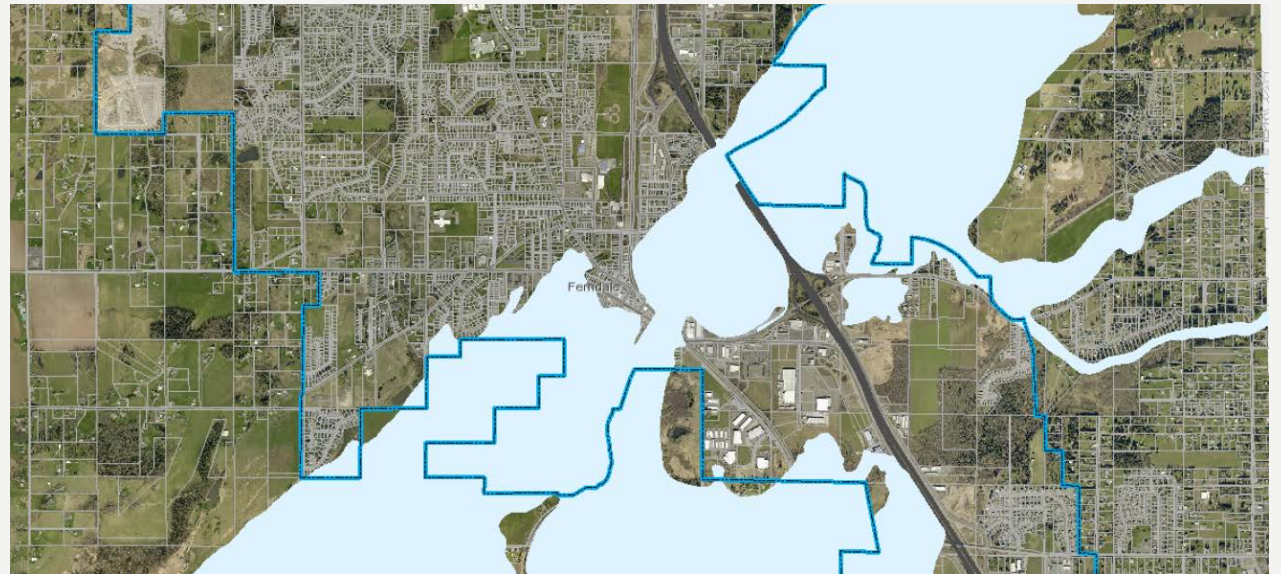


SMP ISSUES

SHORELINE 100-YEAR
FLOODPLAIN

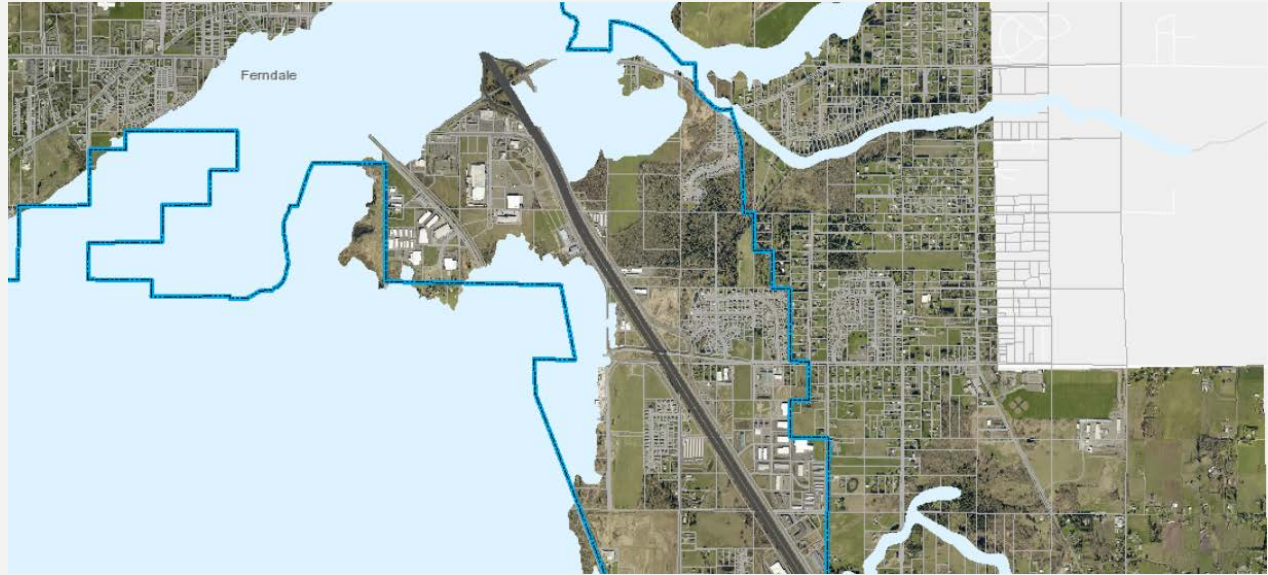


FEMA 100-YEAR
FLOODPLAIN

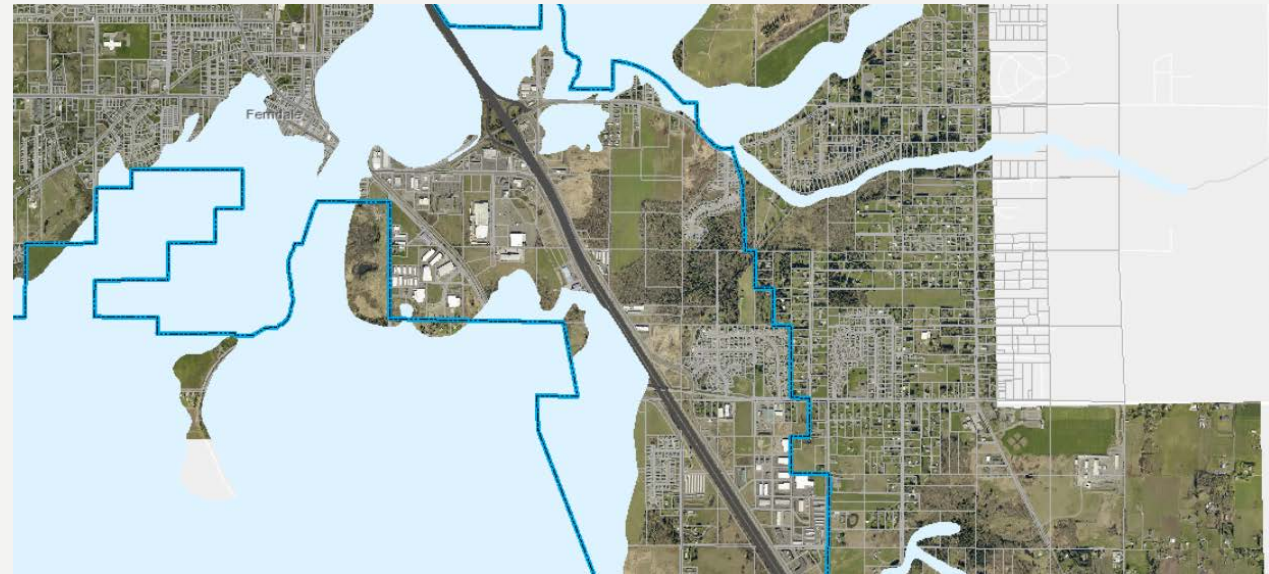


SMP ISSUES

SHORELINE 100-YEAR
FLOODPLAIN



FEMA 100-YEAR
FLOODPLAIN



SMP ISSUES

Exemption language is confusing

3.32.1 Any development of which the total cost or fair market value, whichever is higher, does not exceed five thousand dollars (\$5,000), if such development does not materially interfere with the normal public use of the water or shorelines of the state. For the purpose of determining whether or not a permit is required, the total cost or fair market value shall be based on the value of development that is occurring on shorelines of the state as defined in RCW 90.58.030(2)(c).

The total cost or fair market value of the development shall include the fair market value of any donated, contributed or found labor, equipment or materials.

3.32.15 The activity will have no significant adverse impact on the environment including but not limited to fish, wildlife, fish or wildlife habitat, water quality and aesthetic values;

SMP ISSUES

Restoration Plan

Restoration Plan Overview

The overarching goal of the SMP Restoration Plan is to identify the opportunities for restoring the ecological function for those areas within the City that have experienced degradation. With this in mind, it should be noted that the opportunities for restoration within Ferndale's SMP jurisdiction are limited. In the opinion of the City, the best opportunities for restoration lie outside of Ferndale's limited shoreline jurisdiction.

With the Nooksack River "book-ended" by the Interstate 5 Bridge at the northern terminus of the City's SMP jurisdiction and by the Burlington Northern Railroad Bridge and City Main Street Bridge at the southern terminus, the wild attributes of the Nooksack are, by necessity, severely limited in this area. The City is not able to move any of these bridges and nor would the City want to remove these vital transportation infrastructure structures.

The best opportunities for restoration lies in the City's ability to partner with jurisdictions to the north and south on enhancement projects. In particular, there exists great opportunities for the City of Ferndale to partner with the Lummi Tribe on enhancement projects. The Lummi Nation contains much land that is well suited for restoration projects. The City has and will remain committed to



Isolated Wetland on Riverfront Golf Course

REVIEW OPTIONS FOR PC

1

GENERAL DIRECTION:
REVISIONS PROVIDED
OVER NEXT SEVERAL
MONTHS

2

MORE HANDS ON
APPROACH

3

CHAPTER BY
CHAPTER
REVIEW/DEVELOP
SCOPE OF WORK?

UPDATE TIMELINE

2018

January

Mon	Tue	Wed	Thu	Fri	Sat	Sun
1	2	3	4	5	6	7
8	9	10	11	12	13	14
15	16	17	18	19	20	21
22	23	24	25	26	27	28
29	30	31	1	2	3	4
5	6	7	8	9	10	11

February

Mon	Tue	Wed	Thu	Fri	Sat	Sun
29	30	31	1	2	3	4
5	6	7	8	9	10	11
12	13	14	15	16	17	18
19	20	21	22	23	24	25
26	27	28	1	2	3	4
5	6	7	8	9	10	11

March

Mon	Tue	Wed	Thu	Fri	Sat	Sun
26	27	28	1	2	3	4
5	6	7	8	9	10	11
12	13	14	15	16	17	18
19	20	21	22	23	24	25
26	27	28	29	30	31	1
2	3	4	5	6	7	8

April

Mon	Tue	Wed	Thu	Fri	Sat	Sun
26	27	28	29	30	31	1
2	3	4	5	6	7	8
9	10	11	12	13	14	15
16	17	18	19	20	21	22
23	24	25	26	27	28	29
30	1	2	3	4	5	6

May

Mon	Tue	Wed	Thu	Fri	Sat	Sun
30	1	2	3	4	5	6
7	8	9	10	11	12	13
14	15	16	17	18	19	20
21	22	23	24	25	26	27
28	29	30	31	1	2	3
4	5	6	7	8	9	10

June

Mon	Tue	Wed	Thu	Fri	Sat	Sun
28	29	30	31	1	2	3
4	5	6	7	8	9	10
11	12	13	14	15	16	17
18	19	20	21	22	23	24
25	26	27	28	29	30	1
2	3	4	5	6	7	8

July

Mon	Tue	Wed	Thu	Fri	Sat	Sun
25	26	27	28	29	30	1
2	3	4	5	6	7	8
9	10	11	12	13	14	15
16	17	18	19	20	21	22
23	24	25	26	27	28	29
30	31	1	2	3	4	5

August

Mon	Tue	Wed	Thu	Fri	Sat	Sun
30	31	1	2	3	4	5
6	7	8	9	10	11	12
13	14	15	16	17	18	19
20	21	22	23	24	25	26
27	28	29	30	31	1	2
3	4	5	6	7	8	9

September

Mon	Tue	Wed	Thu	Fri	Sat	Sun
27	28	29	30	31	1	2
3	4	5	6	7	8	9
10	11	12	13	14	15	16
17	18	19	20	21	22	23
24	25	26	27	28	29	30
1	2	3	4	5	6	7

October

Mon	Tue	Wed	Thu	Fri	Sat	Sun
1	2	3	4	5	6	7
8	9	10	11	12	13	14
15	16	17	18	19	20	21
22	23	24	25	26	27	28
29	30	31	1	2	3	4
5	6	7	8	9	10	11

November

Mon	Tue	Wed	Thu	Fri	Sat	Sun
29	30	31	1	2	3	4
5	6	7	8	9	10	11
12	13	14	15	16	17	18
19	20	21	22	23	24	25
26	27	28	29	30	1	2
3	4	5	6	7	8	9

December

Mon	Tue	Wed	Thu	Fri	Sat	Sun
26	27	28	29	30	1	2
3	4	5	6	7	8	9
10	11	12	13	14	15	16
17	18	19	20	21	22	23
24	25	26	27	28	29	30
31	1	2	3	4	5	6