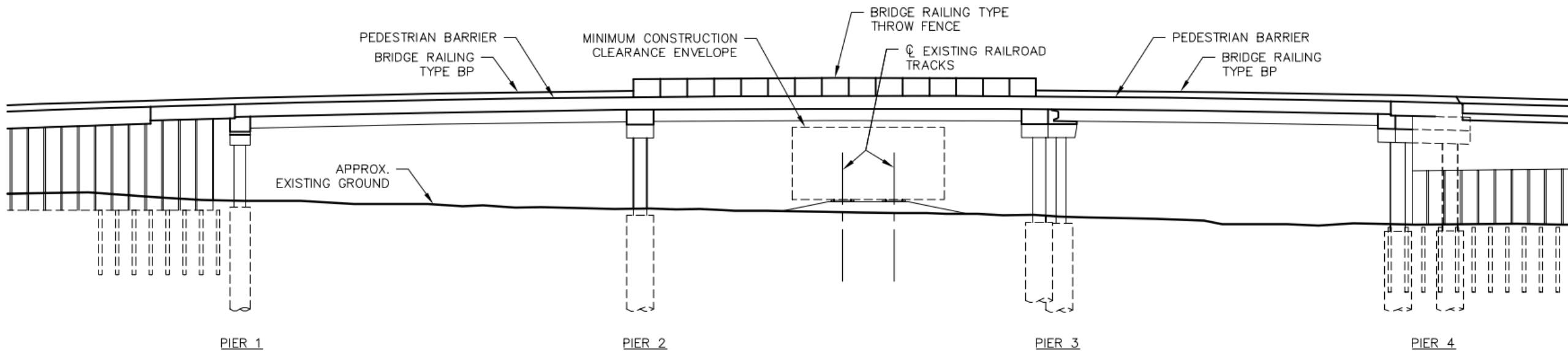


# THORNTON STREET OVERPASS

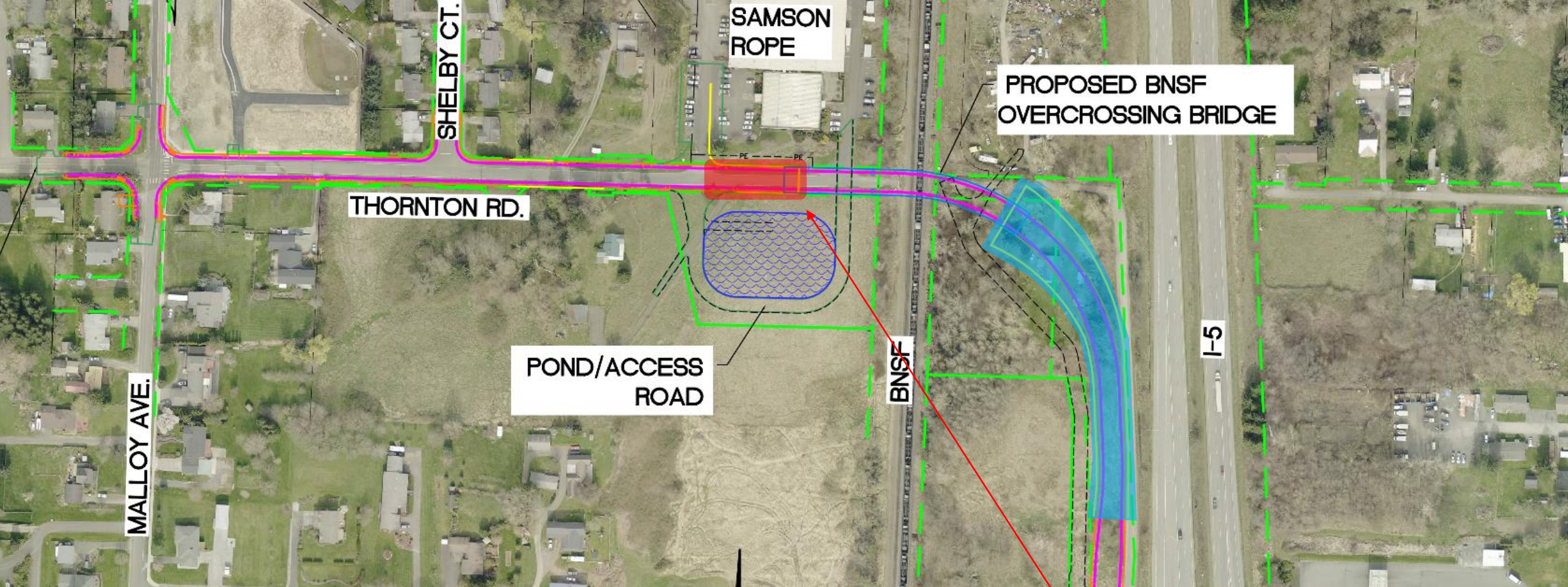
Wall Finishes



**BRIDGE LAYOUT**

# THORNTON STREET OVERPASS

Profile View

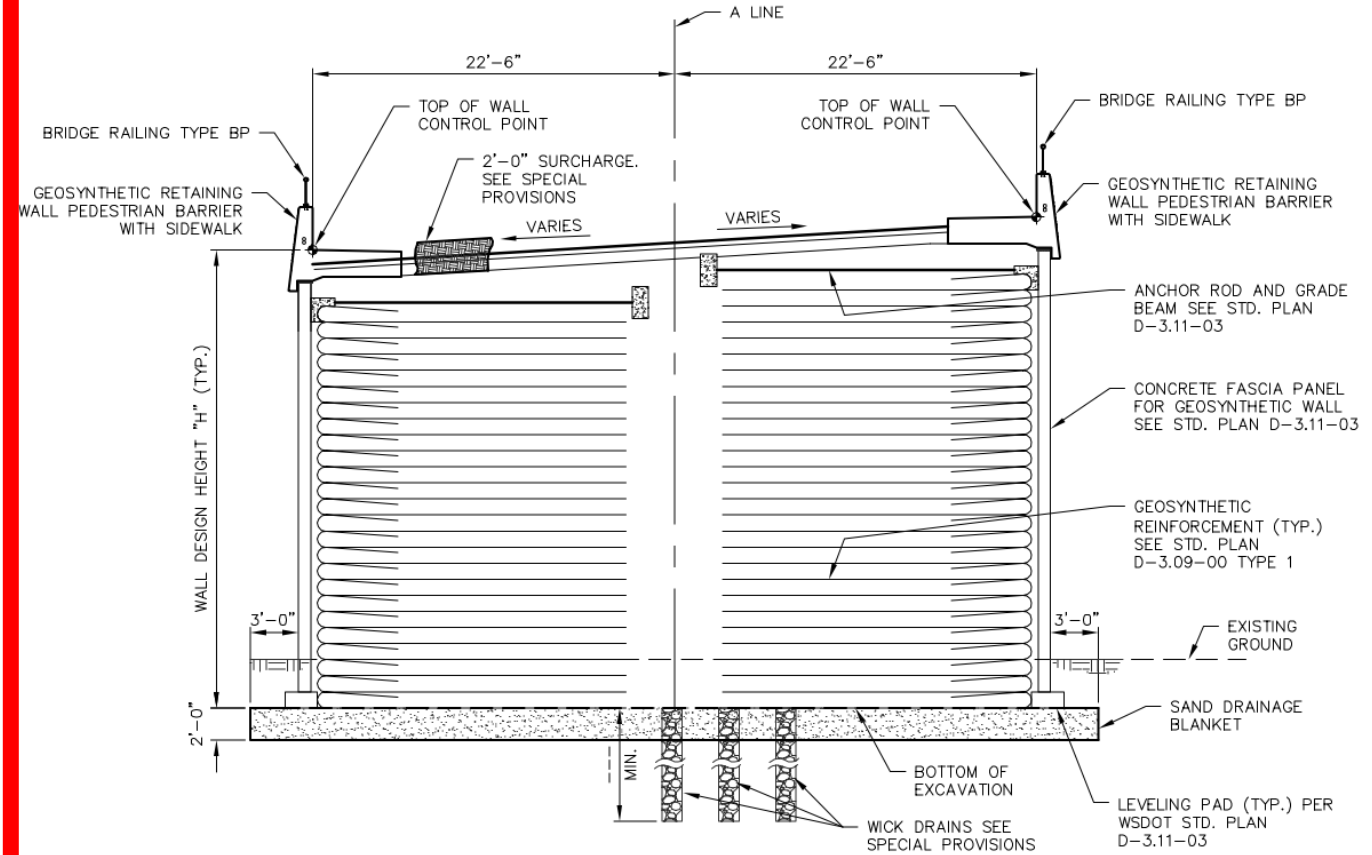


# WALL LOCATIONS

- Wall Only (West of BNSF)
- Wall & Slope (East of BNSF)

# GEOSYNTHETIC RETAINING WALLS

**MAXIMUM HEIGHT +/- 23 FEET**  
West of bridge and adjacent to BNSF

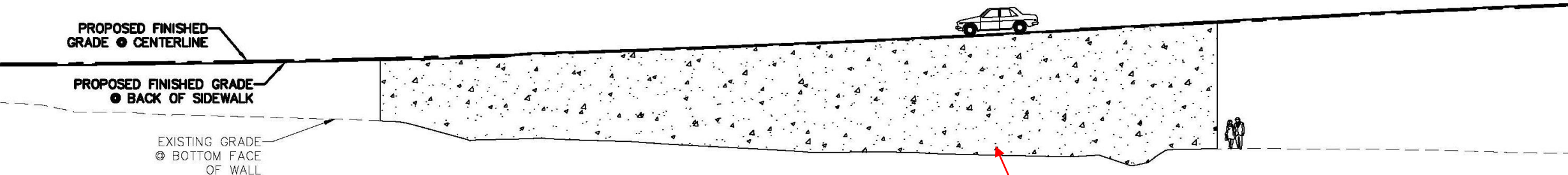


## **GEOSYNTHETIC RETAINING WALL TYPICAL SECTION AT WALL 1 AND 2**

Scale: 3/16"=1'-0"

WALLS SHOWN ON BOTH SIDES. SEE "WALL AND GROUND  
IMPROVEMENT LAYOUT" SHEET FOR WALL LIMITS.

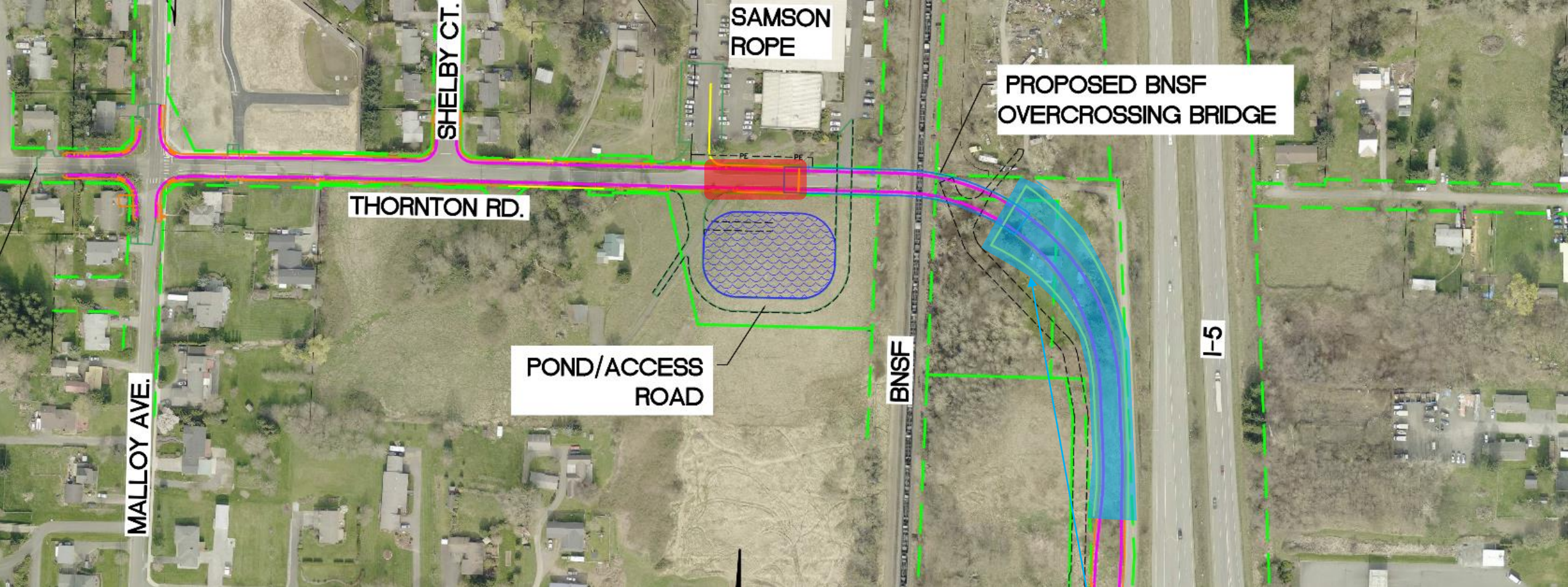




WEST SIDE  
NORTH WALL - PROFILE VIEW

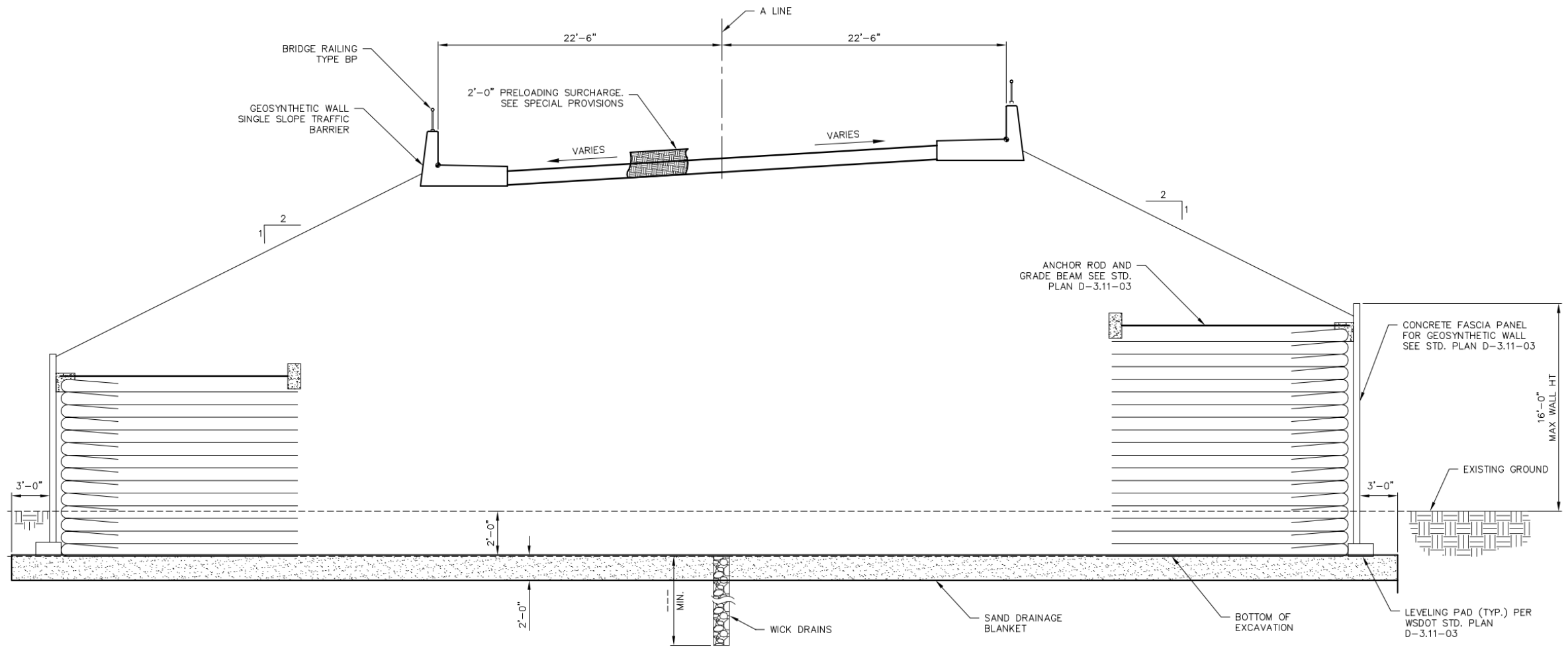
# WALL LOCATIONS

- Wall Only (West of BNSF)
- Wall & Slope (East of BNSF)



# WALL LOCATIONS

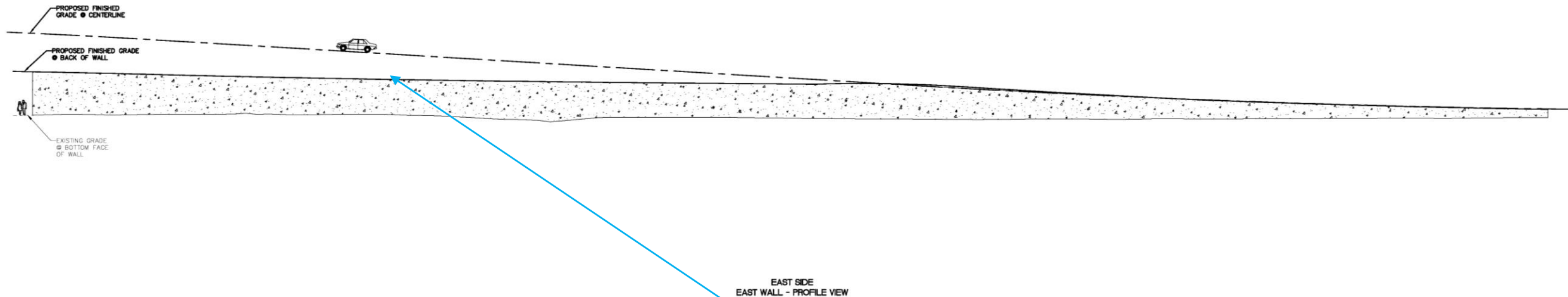
- Wall Only (West of BNSF)
- Wall & Slope (East of BNSF)



# GEOSYNTHETIC RETAINING WALLS WITH SLOPE

Maximum height at east side of bridge and adjacent to BNSF is approximately 16 feet.





# WALL LOCATIONS

- Wall Only (West of BNSF)
- Wall & Slope (East of BNSF)





# INITIAL CONSTRUCTION

Geosynthetics are used to construct an earthen-filled wall as well as pre-load existing soils





# INITIAL CONSTRUCTION

Geosynthetics are used to construct an earthen-filled wall as well as pre-load existing soils

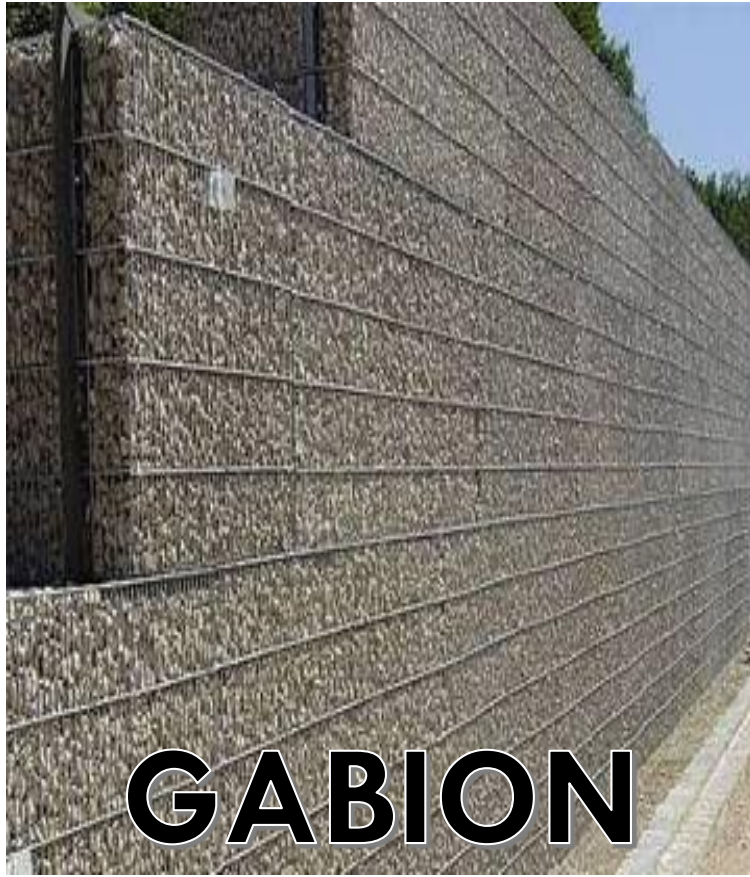




# INITIAL CONSTRUCTION

Geosynthetics are used to construct an earthen-filled wall as well as pre-load existing soils

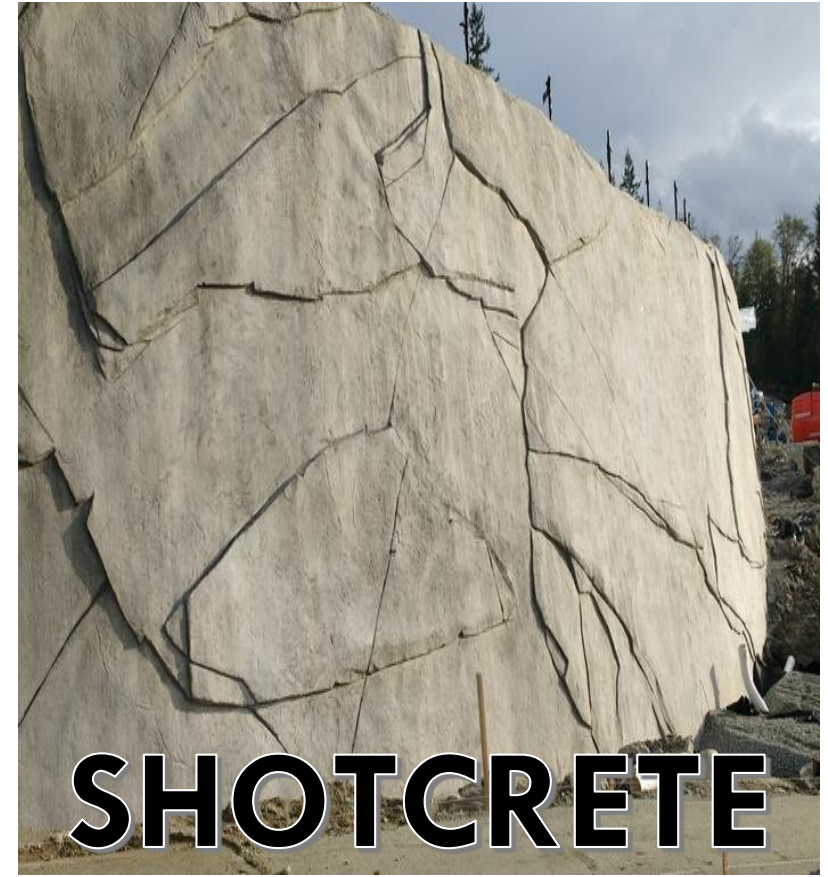




**GABION**



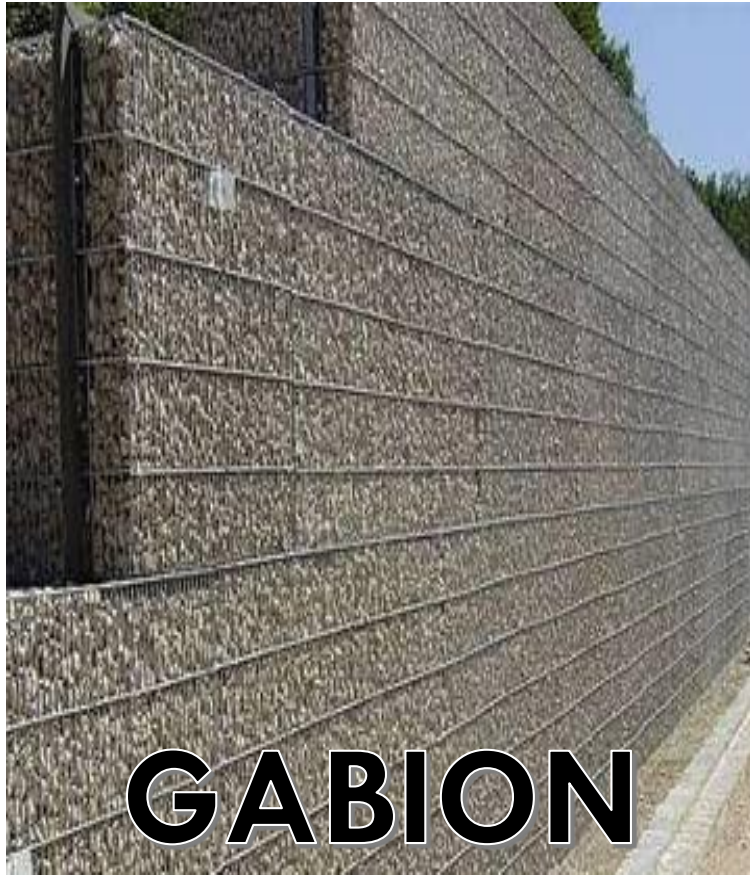
**PRECAST  
PANEL**



**SHOTCRETE**

## THREE WALL FACING OPTIONS FIVE PRICE POINTS

- \$ Gabion Only
- \$ Panels Only
- \$ Shotcrete Only
- \$ Gabion + Ties
- \$ Gabion + Ties + Settlement + Shotcrete



# GABION

# \$850 K

THREE WALL FACING OPTIONS  
FIVE PRICE POINTS

**\$ Gabion Only**

\$ Panels Only

\$ Shotcrete Only

\$ Gabion + Ties

\$ Gabion + Ties + Settlement + Shotcrete





# **PRECAST PANEL**

**currently budgeted**

**\$2.2 M**

**THREE WALL FACING OPTIONS  
FIVE PRICE POINTS**

\$ Gabion Only

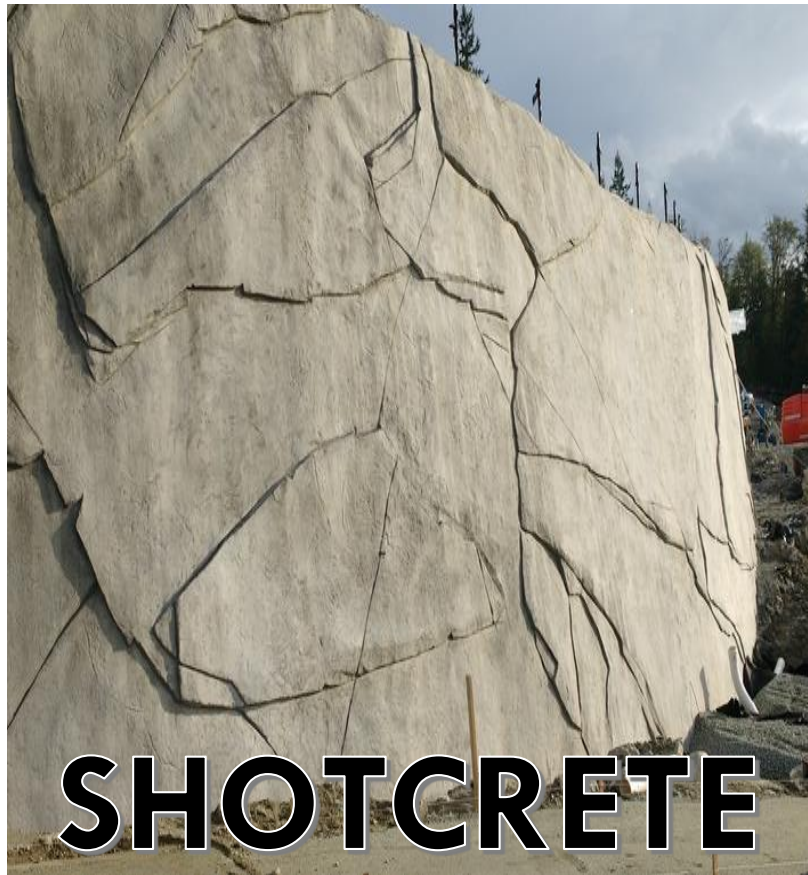
**\$ Panels Only**

\$ Shotcrete Only

\$ Gabion + Ties

\$ Gabion + Ties + Settlement + Shotcrete





# SHOTCRETE

trowel finish – sculpted finish

**\$1.9 - \$3.3 M**

THREE WALL FACING OPTIONS  
FIVE PRICE POINTS

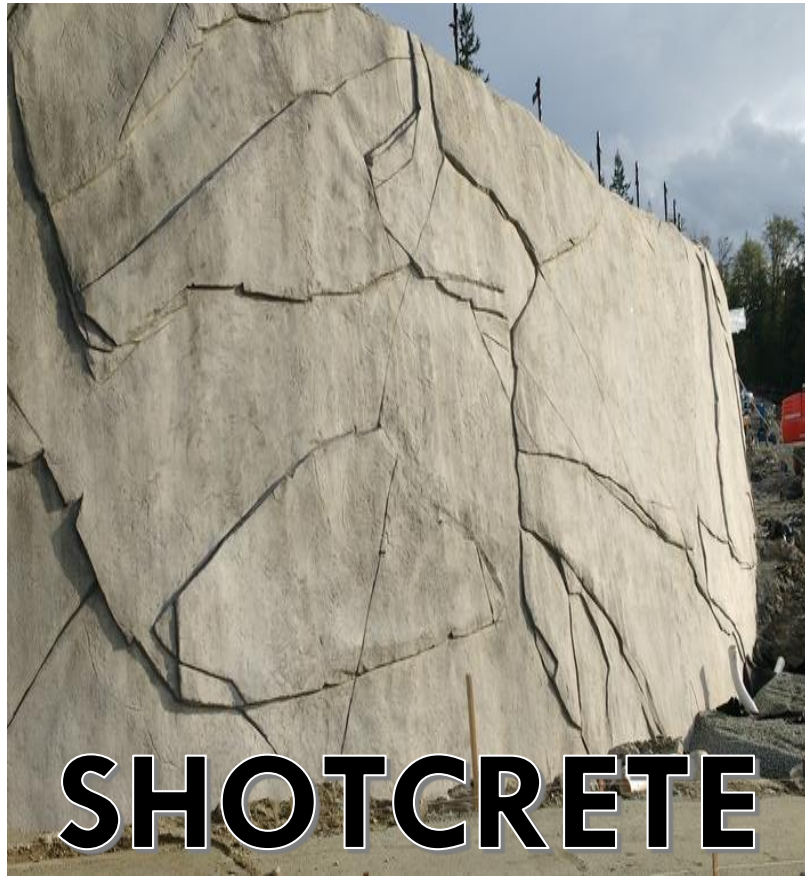
\$ Gabion Only

\$ Panels Only

**\$ Shotcrete Only**

\$ Gabion + Ties

\$ Gabion + Ties + Settlement + Shotcrete



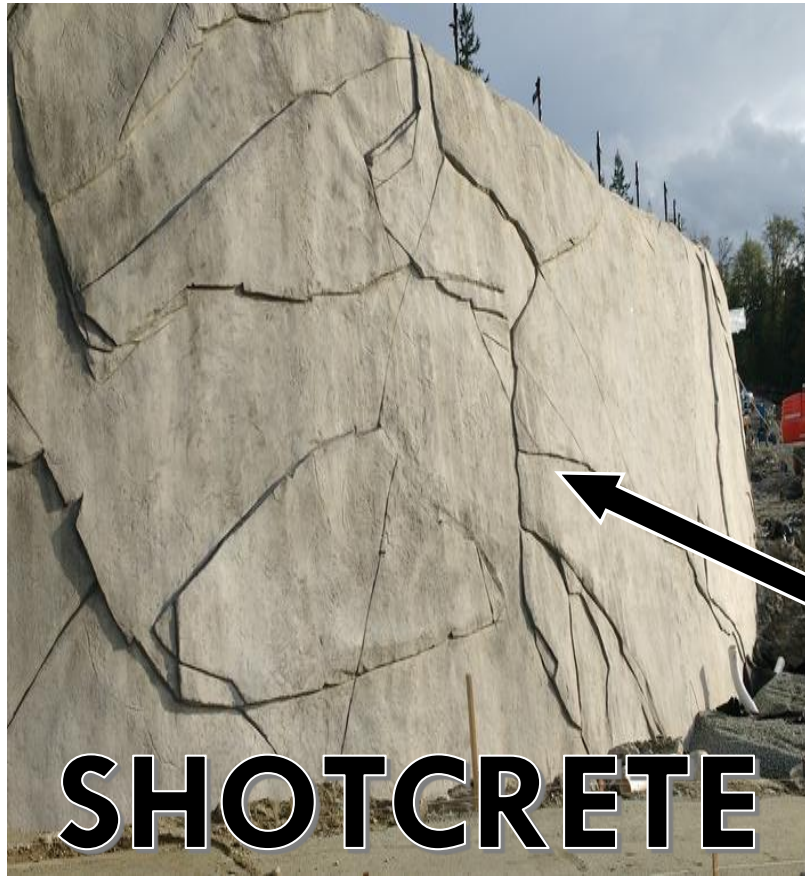
# SHOTCRETE



THREE WALL FACING OPTIONS  
FIVE PRICE POINTS

- \$ Gabion Only
- \$ Panels Only
- \$ Shotcrete Only**
- \$ Gabion + Ties
- \$ Gabion + Ties + Settlement + Shotcrete





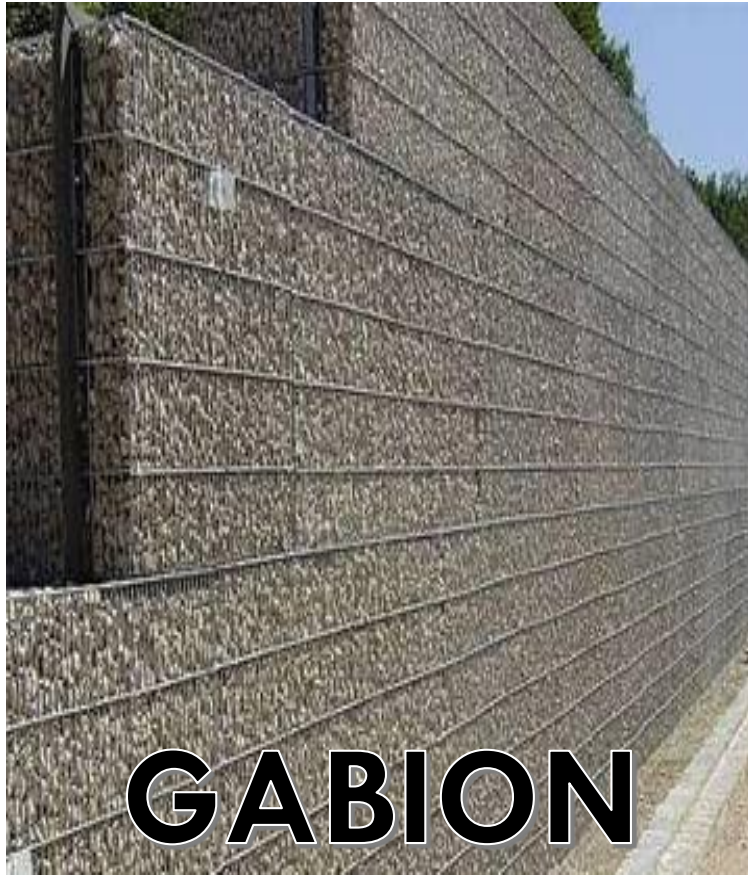
# SHOTCRETE



THREE WALL FACING OPTIONS  
FIVE PRICE POINTS

- \$ Gabion Only
- \$ Panels Only
- \$ Shotcrete Only**
- \$ Gabion + Ties
- \$ Gabion + Ties + Settlement + Shotcrete





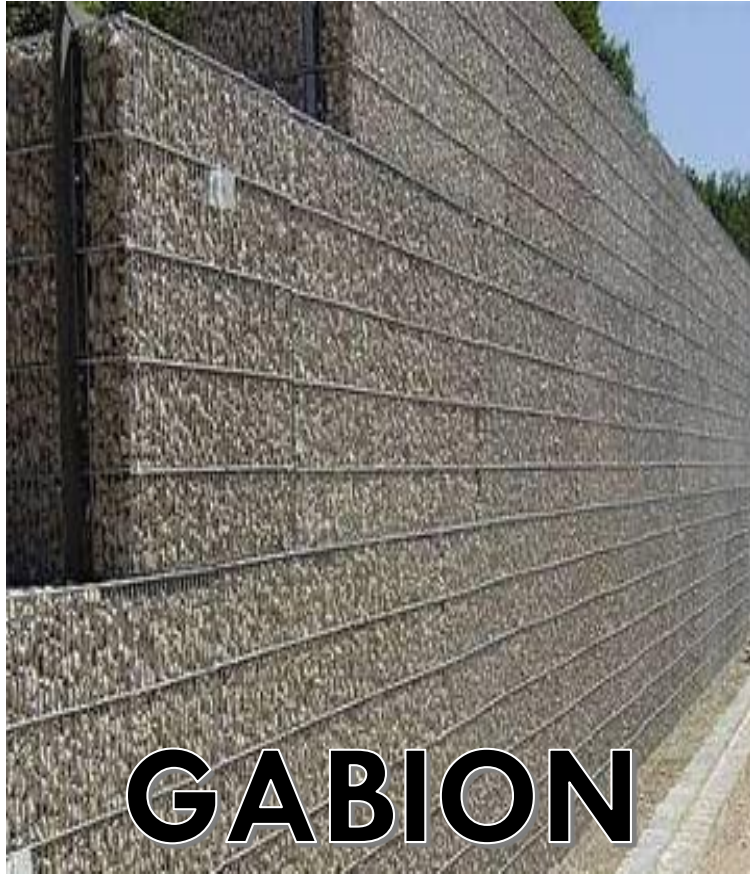
# GABIONS GONE BAD

what settlement might look like\*



THREE WALL FACING OPTIONS  
FIVE PRICE POINTS

- \$ Gabion Only
- \$ Panels Only
- \$ Shotcrete Only
- \$ Gabion + Ties
- \$ Gabion + Ties + Settlement + Shotcrete



# GABION + TIES

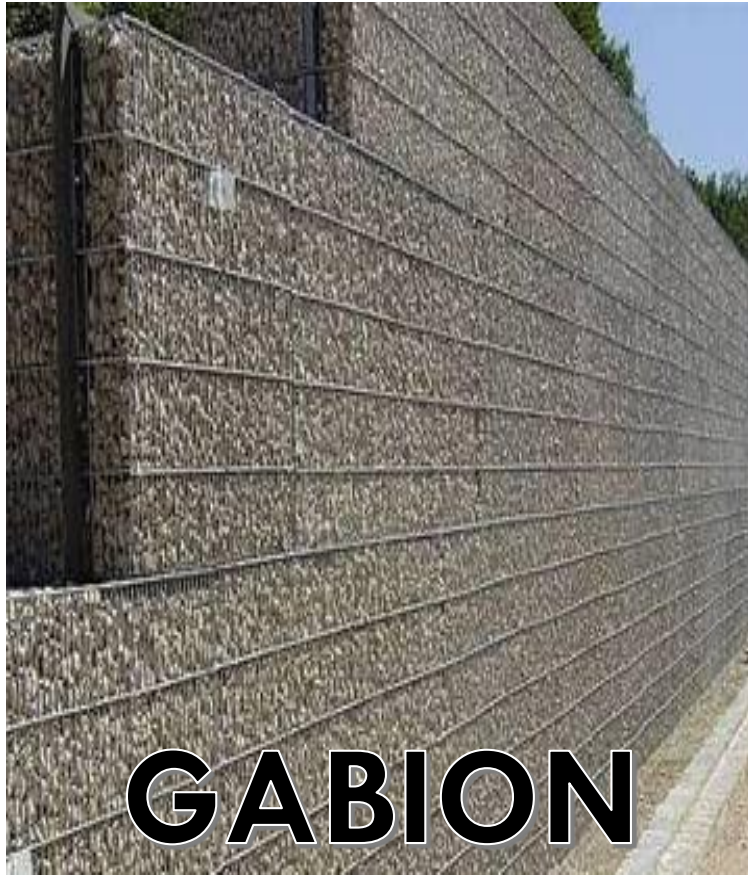
provision for settlement

**\$1.3 M**

THREE WALL FACING OPTIONS  
FIVE PRICE POINTS

- \$ Gabion Only
- \$ Panels Only
- \$ Shotcrete Only
- \$ Gabion + Ties**
- \$ Gabion + Ties + Settlement + Shotcrete





# GABION + TIES

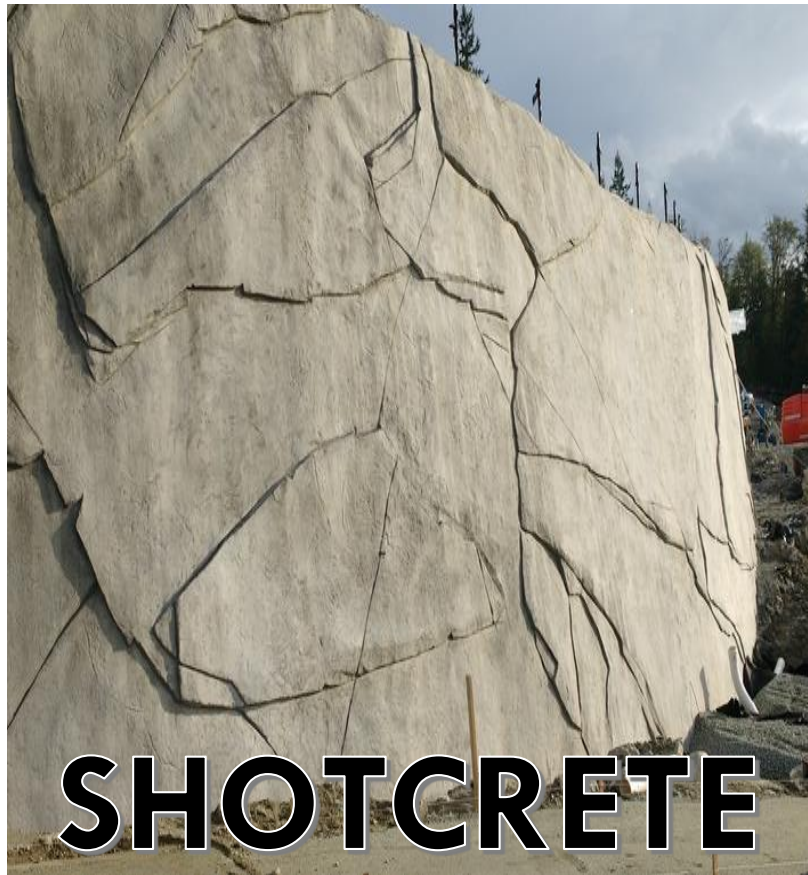
## provision for uneven settlement



THREE WALL FACING OPTIONS  
FIVE PRICE POINTS

- \$ Gabion Only
- \$ Panels Only
- \$ Shotcrete Only
- \$ Gabion + Ties**
- \$ Gabion + Ties + Settlement + Shotcrete





# SHOTCRETE FASCIA

over settled gabion

**\$2.25 – 3.6 M**

THREE WALL FACING OPTIONS  
FIVE PRICE POINTS

\$ Gabion Only

\$ Panels Only

\$ Shotcrete Only

\$ Gabion + Ties

**\$ Gabion + Ties + Settlement + Shotcrete**

# ONGOING MAINTENANCE

## STRUCTURAL MAINTENANCE

- as needed by contractors

## AESTHETIC MAINTENANCE

- graffiti removal
  - flat surfaces are easier to clean
  - pigmented sealer is graffiti resistant

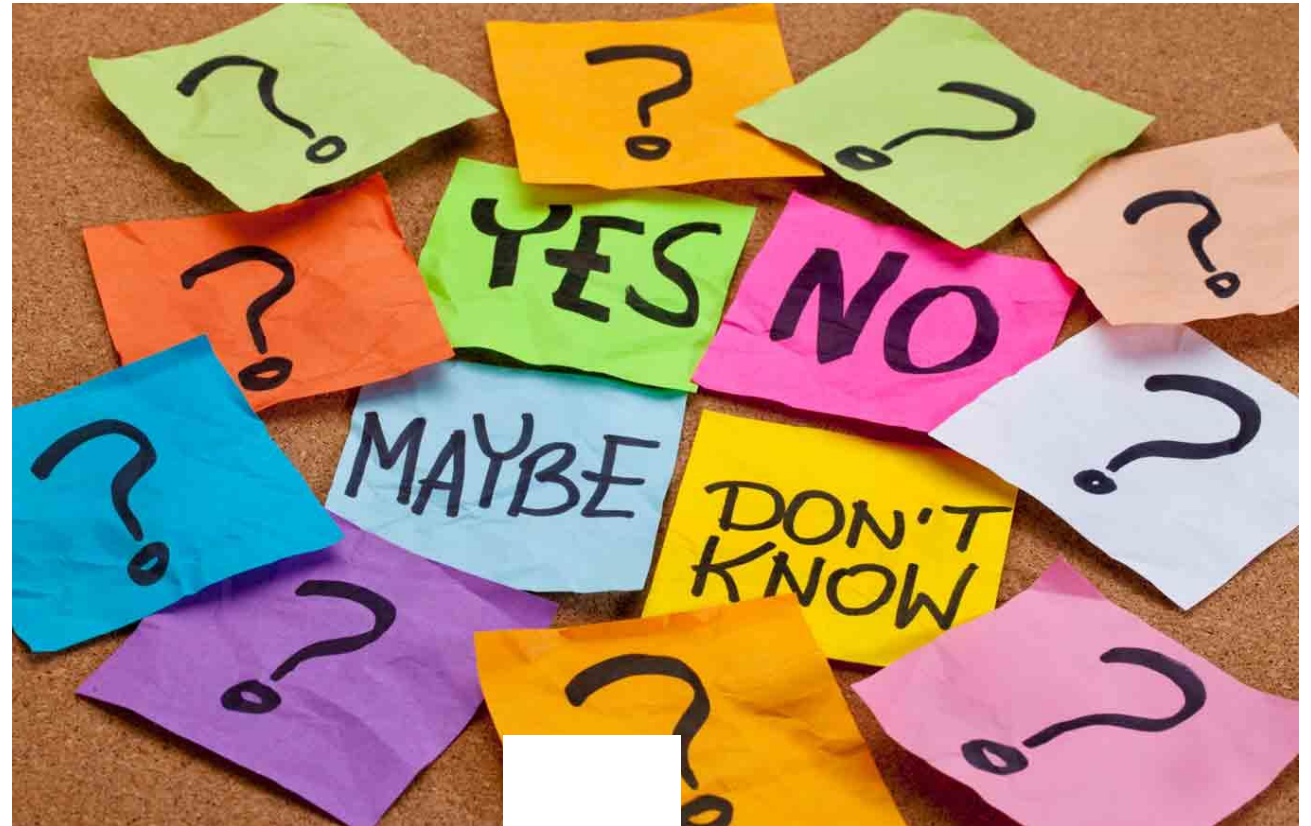




# DECISIONS, DECISIONS

Decision on wall finishes can be made:

- Today
- Next Council Meeting
- At the time of bid
  - Alternative Bidding



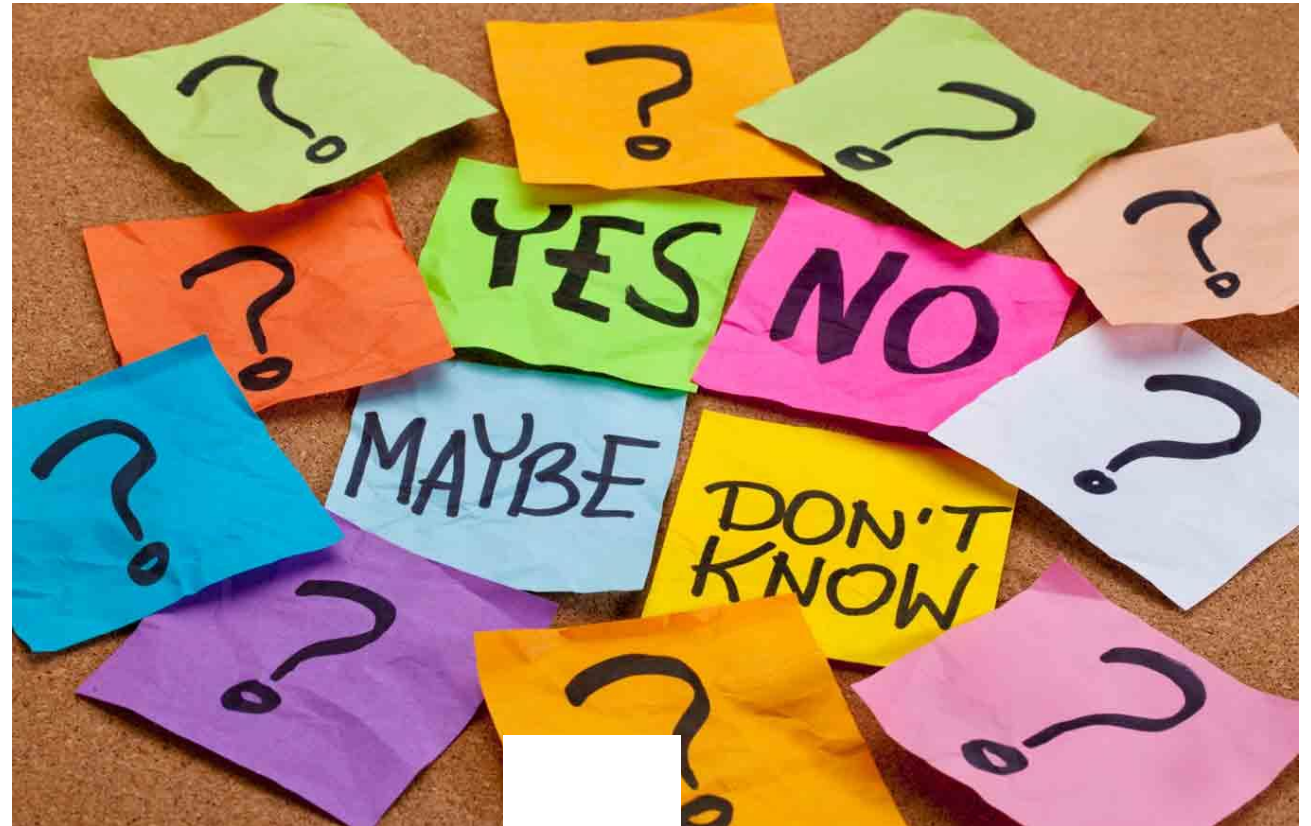
# DECISIONS, DECISIONS

Decision on wall finishes  
can be made:

- Today
- Next Council Meeting

➔ At the time of bid

- Alternative Bidding





# GABION





# GABION







# GABION



# PRECAST PANEL



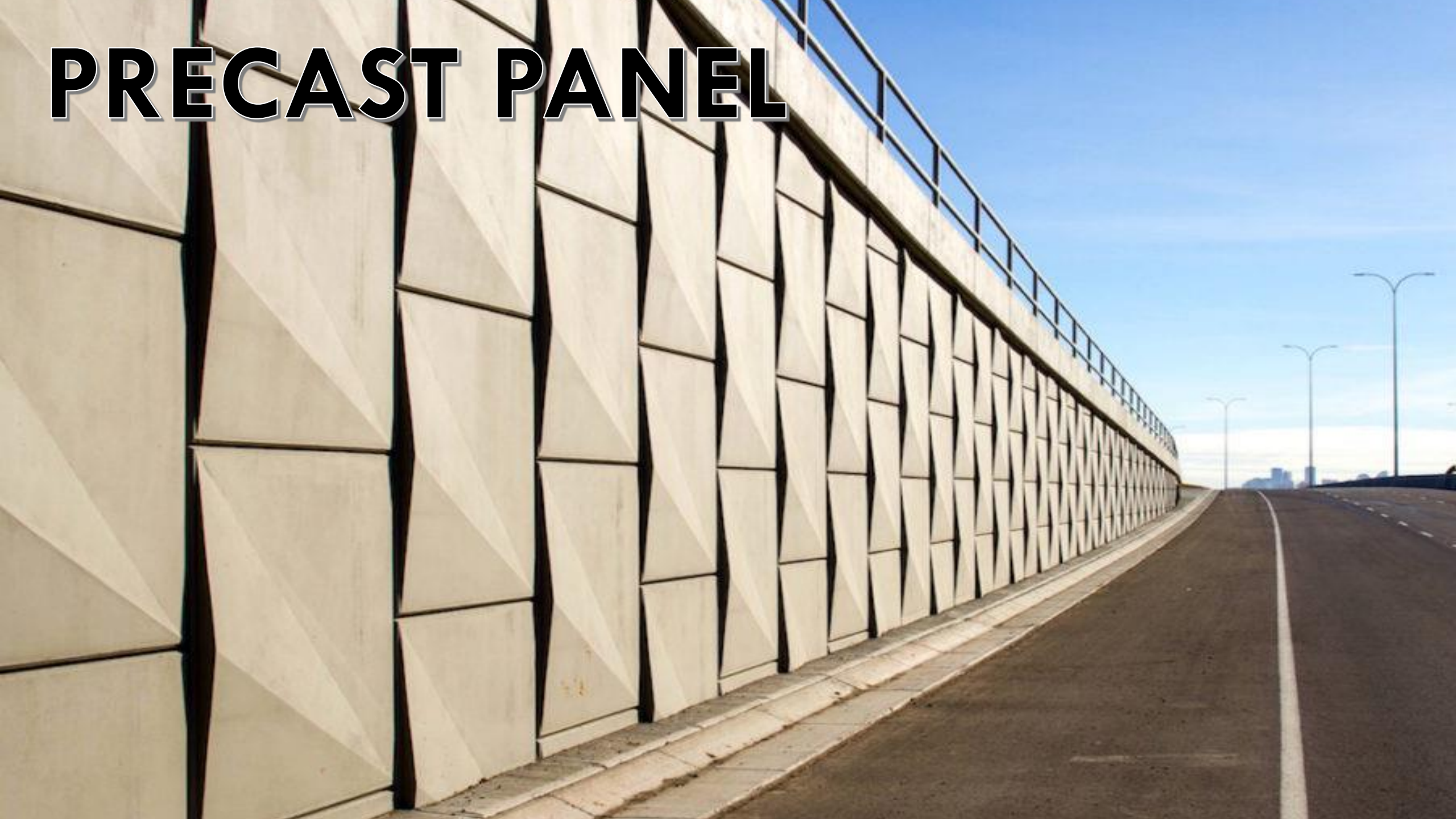


# PRECAST PANEL





# PRECAST PANEL





# SHOTCRETE





# SHOTCRETE

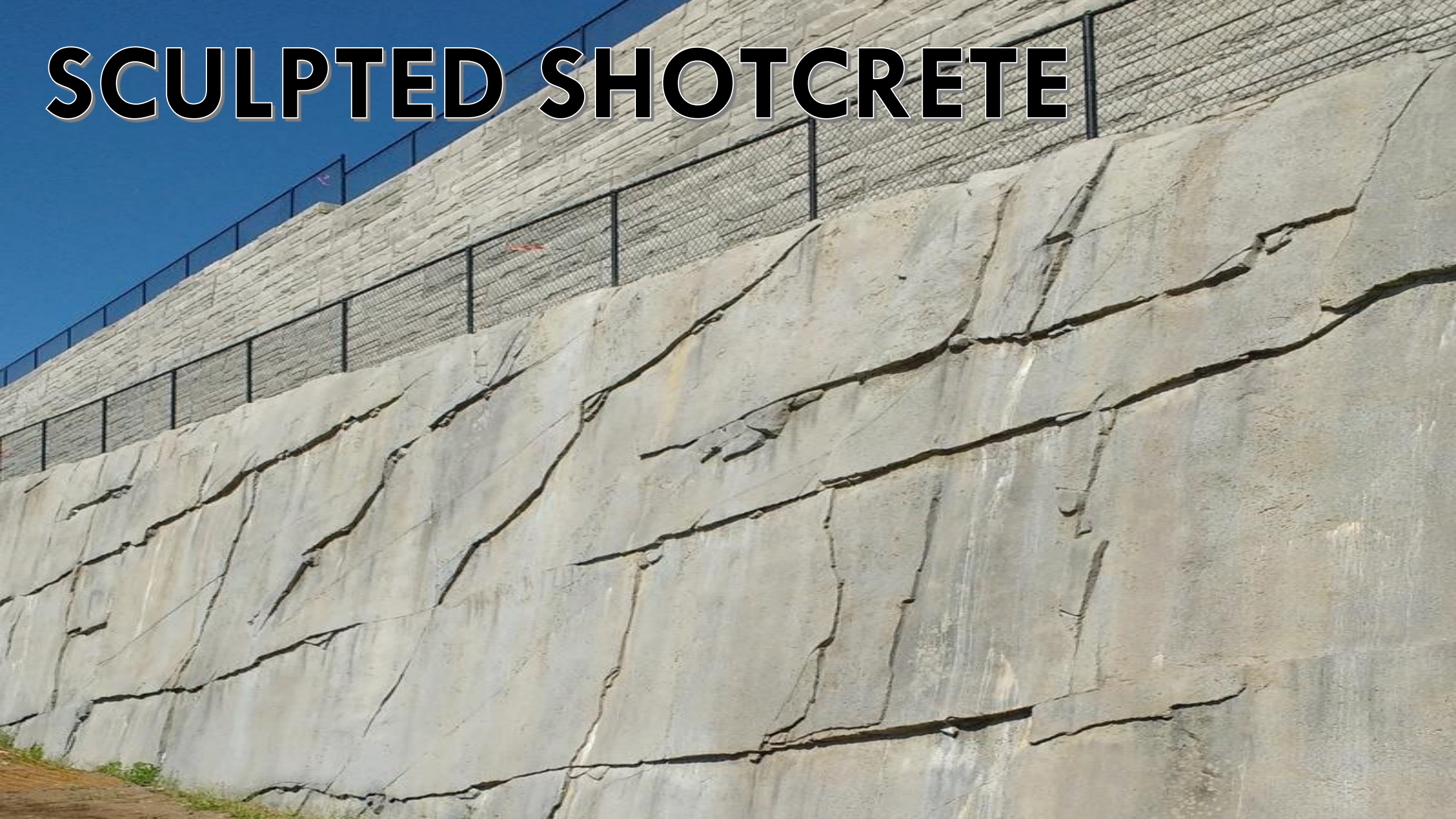


# SHOTCRETE

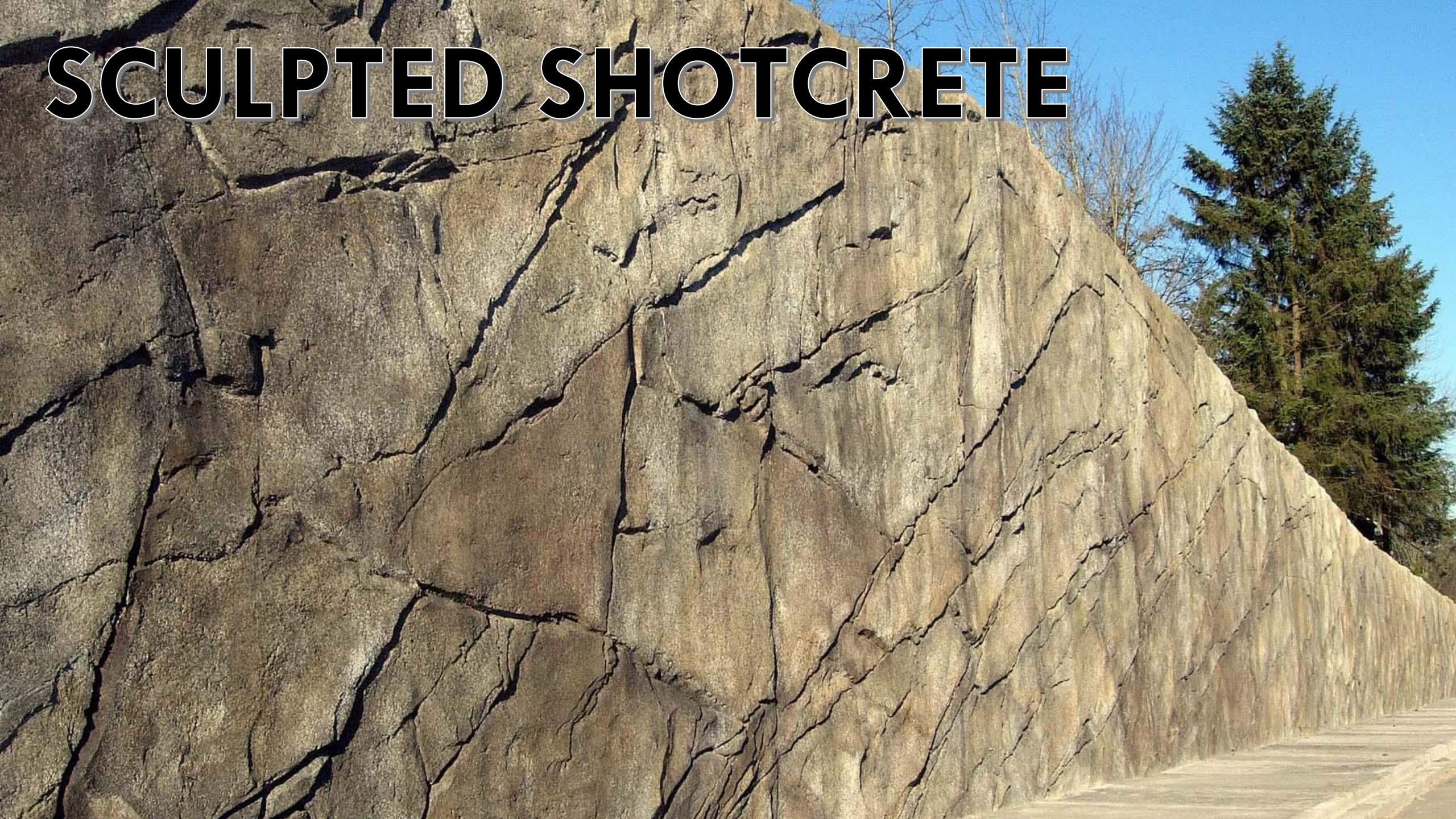




# SCULPTED SHOTCRETE







# SCULPTED SHOTCRETE



# SCULPTED SHOTCRETE

