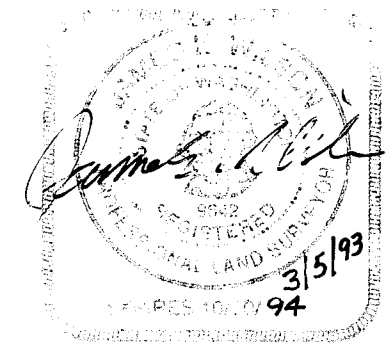
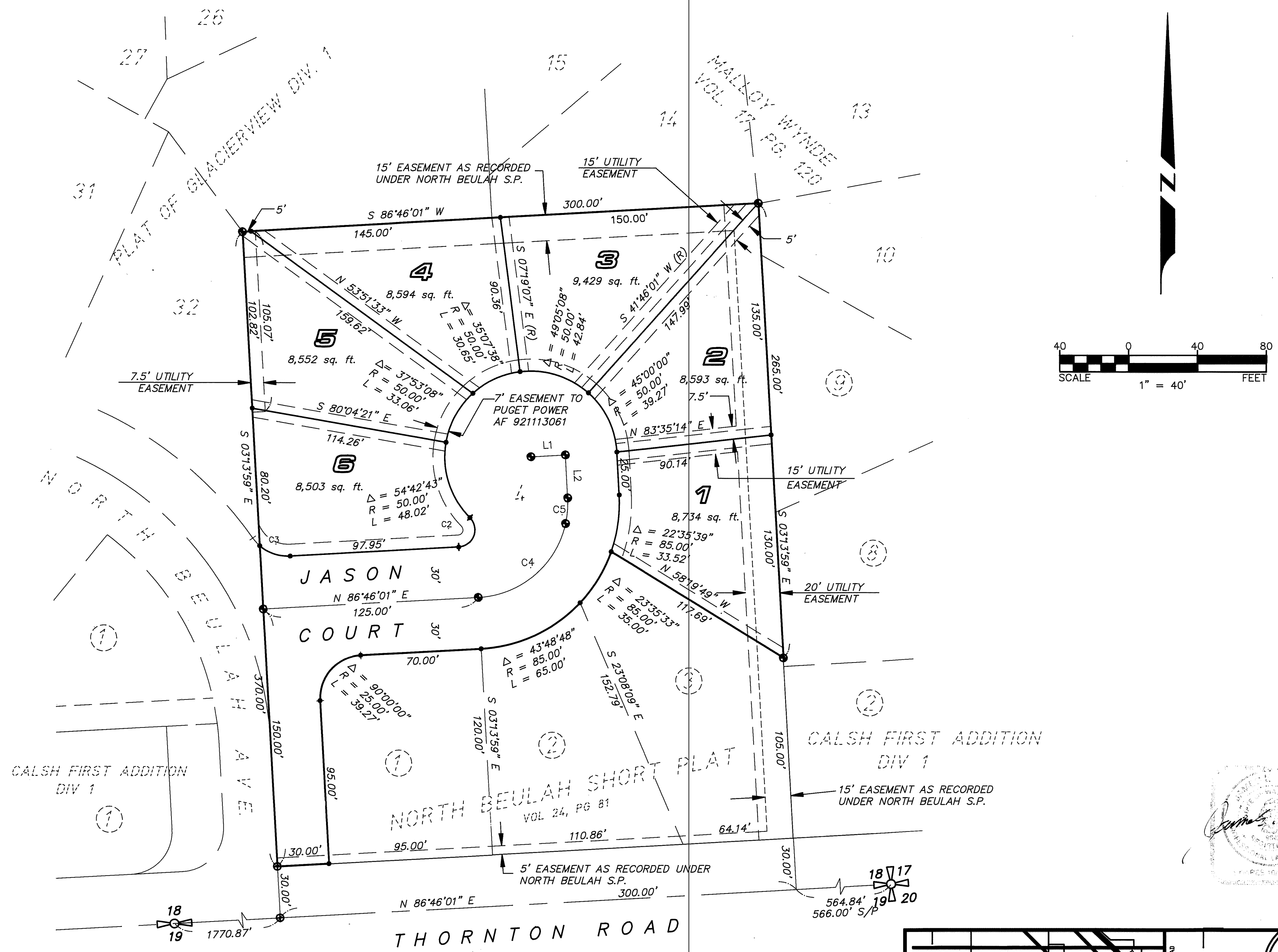


NORTH BEULAH

A PORTION OF THE SOUTHEAST QUARTER OF THE SOUTHEAST QUARTER OF SECTION 18, TOWNSHIP 39 NORTH, RANGE 2 EAST, W.M., WHATCOM COUNTY, WASHINGTON



CURVE DATA

CURVE	RADIUS	LENGTH	DELTA
C2	10.00'	23.01'	131°48'37"
C3	25.00'	19.15'	43°52'38"
C4	55.00'	71.36'	74°20'06"
C5	55.00'	15.04'	15°39'54"

LINE DATA

LINE	DIRECTION	DISTANCE
L1	N 86°46'01" E	20.00'
L2	S 03°13'59" E	25.00'

BASIS OF BEARINGS
 BEARINGS ARE BASED ON HOLDING THE RECORD BEARING OF N 86°46'01" E FOR THE SOUTH LINE OF THE SE 1/4, SECTION 18, TOWNSHIP 39N, RANGE 2E, W.M., WHICH IS ALSO THE CENTER LINE OF THORNTON ROAD.

- LEGEND**
- ALL LOT CORNERS UNLESS OTHERWISE NOTED SET WITH REBAR AND YELLOW CAPS #9642.
 - CONCRETE MONUMENTS SET AT ALL PLAT CORNERS UNLESS OTHERWISE NOTED.

METHOD AND INSTRUMENT USED
 SURVEY PERFORMED BY CLOSED FIELD TRAVERSE METHOD IN OCTOBER, 1990, WITH A LEITZ SET 4 TOTAL STATION.

DRAINAGE NOTE:
 ALL INTERIOR LOT LINES HAVE A 5' WIDE DRAINAGE AND UTILITY EASEMENT ON EACH SIDE AS SHOWN.

