

2050900662

LABOUNTY ESTATES

WITHIN THE CITY OF FERNDAL, WASHINGTON

PTN: NW 1/4 OF SECTION 33, TOWNSHIP 39 NORTH, RANGE 2 EAST OF W.M.

DETAIL MAP



Course	Bearing	Distance
L11	N 81°56'45" W	37.51'
L12	S 31°21'50" E	29.21'
L13	S 01°19'50" W	51.63'
L14	S 00°40'54" W	12.72'
L15	S 60°55'52" E	46.10'
L16	S 77°27'50" E	60.74'
L17	S 60°55'52" E	33.94'
L18	S 76°18'58" E	54.09'
L19	S 82°01'07" E	17.58'
L20	S 89°19'06" E	25.12'
L21	N 87°12'30" E	44.53'
L22	N 88°23'32" E	32.18'
L23	S 00°40'54" W	15.84'
L24	S 89°19'06" E	10.00'
L25	N 00°40'54" E	13.98'
L26	S 43°23'14" E	37.21'
L27	N 00°40'54" E	13.28'

Curve	Radius	Length	Delta
C1	300.00'	171.19'	32°41'40"
C2	250.00'	142.66'	32°41'40"
C3	55.00'	86.39'	90°00'00"
C4	25.00'	39.55'	90°38'46"
C5	25.00'	39.27'	90°00'00"
C6	25.00'	39.27'	90°00'00"
C7	25.00'	39.27'	90°00'00"
C8	25.00'	7.08'	16°13'06"
C9	25.00'	17.26'	39°33'10"
C10	55.00'	139.93'	145°46'16"
C11	55.00'	78.99'	82°17'06"
C12	55.00'	41.64'	43°22'27"
C13	25.00'	15.56'	35°39'33"
C14	85.00'	25.85'	17°25'34"
C15	85.00'	42.29'	28°30'19"
C16	85.00'	46.67'	31°27'39"
C17	85.00'	18.70'	12°36'29"
C18	25.00'	39.27'	90°00'00"
C19	25.00'	20.32'	46°34'03"
C20	25.00'	0.42'	0°57'46"
C21	55.00'	70.63'	73°34'32"
C22	55.00'	40.00'	41°40'19"
C23	55.00'	40.00'	41°40'20"
C24	55.00'	63.81'	66°28'19"
C25	55.00'	47.33'	49°18'20"
C26	25.00'	20.32'	46°34'03"
C27	25.00'	39.27'	90°00'00"

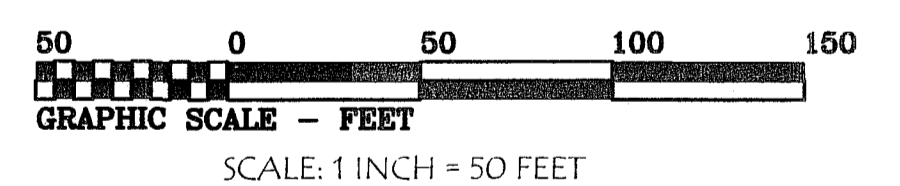
LAND DESCRIPTION: SEE SHEET 1

SURVEYOR'S NOTES: SEE SHEET 4

OCCUPATIONAL INDICATORS AND EXISTING FENCE LINE NOTE:

THIS SURVEY HAS DEPICTED EXISTING FENCE LINES AND/OR ENCROACHMENTS IN ACCORDANCE WITH W.A.C. Ch.332.130. THESE OCCUPATIONAL INDICATORS MAY INDICATE A POTENTIAL FOR CLAIMS OF UNWRITTEN TITLE OWNERSHIP. THE LEGAL RESOLUTION OF OWNERSHIP BASED UPON UNWRITTEN TITLE CLAIMS HAS NOT BEEN RESOLVED BY THIS SURVEY.

////// DENOTES 10' DEDICATED TO CITY OF FERNDAL FOR ROAD PURPOSES



BASIS OF BEARINGS =
CITY OF FERNDAL SURVEY
MONUMENT NETWORK



Scott G. Harkell, L.S. 32430
523 Front Street, Lynden WA 98264
Ph. 360.354.8320 Fax. 360.354.8321
COMPASS POINT SURVEY GROUP INC.

MATCH SHEET 4

LABOUNTY ESTATES

WITHIN THE CITY OF FERNDAL, WASHINGTON

PTN: NW 1/4 OF SECTION 33, TOWNSHIP 39 NORTH, RANGE 2 EAST OF W.M.

DETAIL MAP

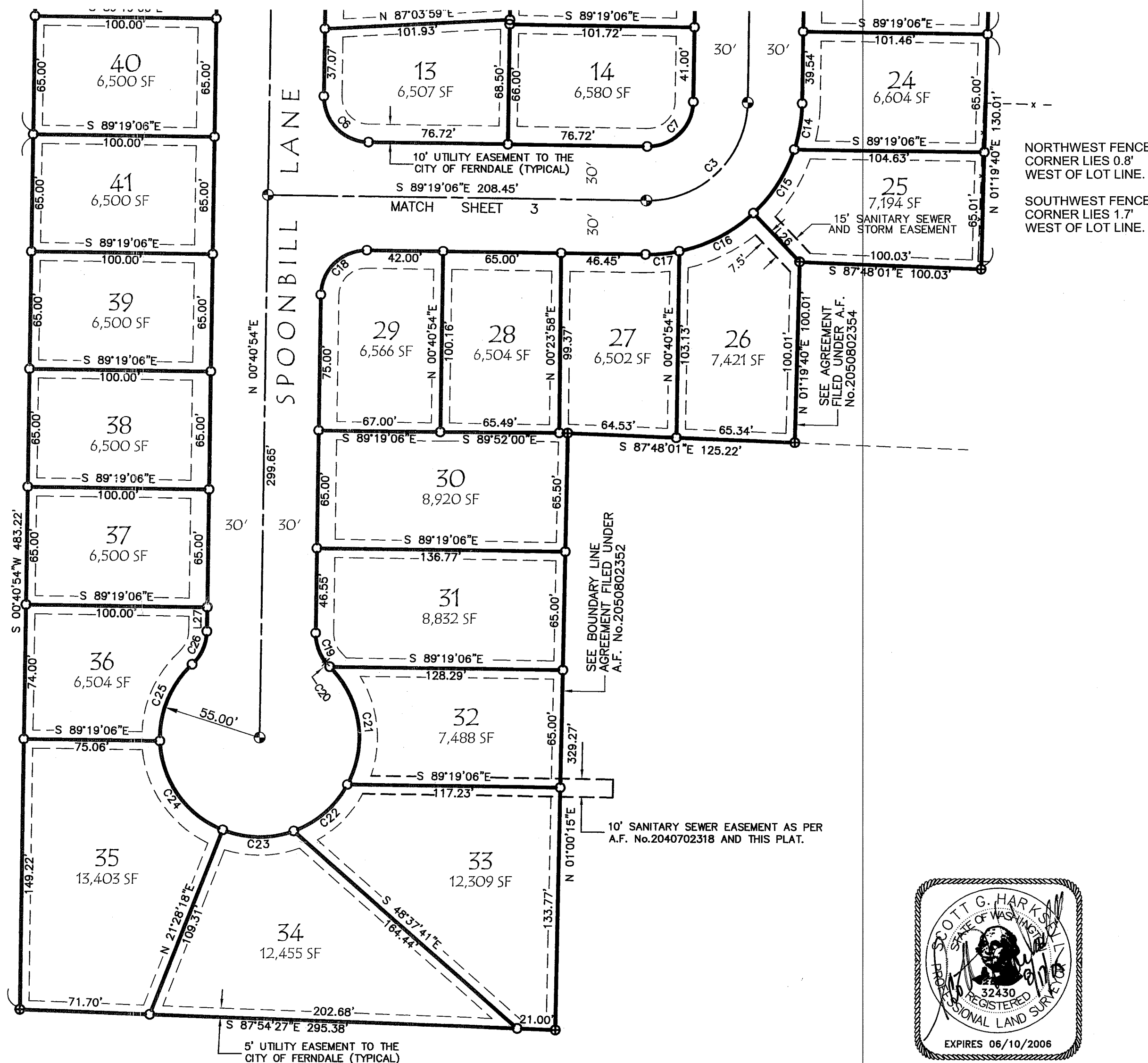
SURVEYORS NOTES:

- "O" DENOTES 5/8 INCH REBAR WITH 1 INCH PLASTIC CAP MARKED "COMPASS POINT SURVEY 32430" SET BY THIS SURVEY IN JUNE OF 2005.
- "⊙" DENOTES BRASS DISC SET IN CONCRETE FOR CENTERLINE ROAD MONUMENTATION BY THIS SURVEY IN JUNE OF 2005.
- "⊕" DENOTES BRASS DISC SET IN CONCRETE FOR EXTERIOR PLAT CORNERS BY THIS SURVEY IN JUNE OF 2005.
- "*" DENOTES CALCULATED POINT ONLY.
- THIS SURVEY WAS PERFORMED BY STANDARD FIELD TRAVERSE USING A TOPCON GPT-3003 TOTAL STATION WITH A TDS RECON DATA COLLECTOR/FIELD COMPUTER IN WINTER OF 2004 AND SPRING OF 2005.
- THIS SURVEY INTO CONTROL POINTS FROM OUR PREVIOUS WORK WITHIN HE AREA AND RELIED UPON RECORD OF SURVEY FILED UNDER AF No.2020800122 FOR SECTION SUBDIVISION. BASIS OF BEARINGS AS PER CITY OF FERNDAL SURVEY MONUMENT NETWORK.
- THIS WAS SURVEY COMPLETED WITH THE BENEFIT OF A SUBDIVISION GUARANTEE (OR PLAT CERTIFICATE) BUT WITHOUT THE BENEFIT OF A TITLE REPORT AND MAY NOT SHOW ALL EASEMENTS THAT A CURRENT TITLE REPORT MIGHT REVEAL.

LAND DESCRIPTION: SEE SHEET 1

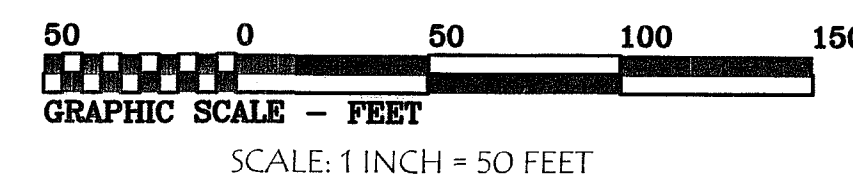
Course	Bearing	Distance
L11	N 81°56'45" W	37.51'
L12	S 31°21'50" E	29.21'
L13	S 01°19'50" W	51.63'
L14	S 00°40'54" W	12.72'
L15	S 60°55'52" E	46.10'
L16	S 77°27'50" E	60.74'
L17	S 60°55'52" E	33.94'
L18	S 76°18'58" E	54.09'
L19	S 82°01'07" E	17.58'
L20	S 89°19'06" E	25.12'
L21	N 87°12'30" E	44.53'
L22	N 88°29'32" E	32.18'
L23	S 00°40'54" W	15.84'
L24	S 89°19'06" E	10.00'
L25	N 00°40'54" E	13.98'
L26	S 43°23'14" E	37.21'
L27	N 00°40'54" E	13.28'

Curve	Radius	Length	Delta
C1	300.00'	171.19'	32°41'40"
C2	250.00'	142.66'	32°41'40"
C3	55.00'	86.39'	90°00'00"
C4	25.00'	39.55'	90°38'46"
C5	25.00'	39.27'	90°00'00"
C6	25.00'	39.27'	90°00'00"
C7	25.00'	39.27'	90°00'00"
C8	25.00'	7.08'	16°13'06"
C9	25.00'	17.26'	39°33'10"
C10	55.00'	139.93'	145°46'16"
C11	55.00'	78.99'	82°17'06"
C12	55.00'	41.84'	43°22'27"
C13	25.00'	15.56'	35°39'33"
C14	85.00'	25.85'	17°25'34"
C15	85.00'	42.29'	28°30'19"
C16	85.00'	46.67'	31°27'39"
C17	85.00'	18.70'	12°36'29"
C18	25.00'	39.27'	90°00'00"
C19	25.00'	20.32'	46°34'03"
C20	25.00'	0.42'	0°57'46"
C21	55.00'	70.63'	73°34'32"
C22	55.00'	40.00'	41°40'19"
C23	55.00'	40.00'	41°40'20"
C24	55.00'	63.81'	65°28'19"
C25	55.00'	47.33'	49°18'20"
C26	25.00'	20.32'	46°34'03"
C27	25.00'	39.27'	90°00'00"



OCCUPATIONAL INDICATORS AND EXISTING FENCE LINE NOTE:

THIS SURVEY HAS DEPICTED EXISTING FENCE LINES AND/OR ENCROACHMENTS IN ACCORDANCE WITH W.A.C. Ch.332.130. THESE OCCUPATIONAL INDICATORS MAY INDICATE A POTENTIAL FOR CLAIMS OF UNWRITTEN TITLE OWNERSHIP. THE LEGAL RESOLUTION OF OWNERSHIP BASED UPON UNWRITTEN TITLE CLAIMS HAS NOT BEEN RESOLVED BY THIS SURVEY.



BASIS OF BEARINGS =
CITY OF FERNDAL SURVEY
MONUMENT NETWORK



Scott G. Harksell, L.S. 32430
523 Front Street, Lynden WA 98264
Ph. 360.354.8320 Fax. 360.354.8321

COMPASS POINT
SURVEY GROUP INC.