



EAGLE

2012 DEVELOPMENT CATALOG



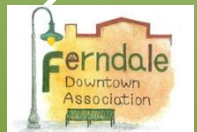
FERNDALE HERITAGE SOCIETY
Preserving the past for the future at Pioneer Park



**Whatcom Old Settlers'
Picnic at Pioneer Park**



Ferndale School District



Ferndale
ARTS
Commission



EAGLE and the EAGLE Catalog - Introduction

The EAGLE Program has been developed as a tool to facilitate the establishment of significant commercial and retail space within the City of Ferndale, Washington. There are seventy-eight unique indicators within the EAGLE Program, reflecting Energy Efficiency, Advanced Technologies, Greater Good, Community Development, Low Impact, and Economic Development.

“Targeted Off-Site Improvements” is one of the seventy-eight EAGLE indicators, and provides the opportunity for the applicant to earn EAGLE points by addressing one or more of the requests listed in this catalog, thereby earning up to sixteen EAGLE points. The EAGLE catalog provides a developer with the opportunity to participate in the development of the community. This catalog, and the EAGLE program in general, is designed with the hope and expectation that businesses which must meet EAGLE standards will become an integral part of the community.

In many cases, the catalog would require that the applicant supply the funds necessary for the purchase and installation of a specific item in a specific location, such as park benches within a City park. For other items, the catalog may require that the applicant contribute funds in order to support an ongoing City or quasi-public project, such as the Ferndale Veteran’s Memorial.

The City has made an effort to identify the number of EAGLE points that can be earned for each request. The City has also provided an approximate estimate for the dollar value of each request, generally at a ratio of \$5,000 per point. The City reserves the right to review and approve specific materials or locations, or to grant flexibility in the ratio of EAGLE points and the cost to the applicant, where applicable.

Finally, not all items listed in the EAGLE Catalog are related to a project that has received City approval or has been supported with public monies. Some items within the catalog support private fund-raising efforts which may ultimately result in a public project, but have not yet been approved by the City. These items have been identified.

EAGLE and the EAGLE Catalog - Introduction

The EAGLE Catalog is divided into several broad categories: Downtown Improvements, City Parks, Public Facilities, Public Art and Miscellaneous Items. Eventually, additional categories such as historic preservation and wetland protection and mitigation will be established. Applicants may choose to contribute funds to a broad category, with the expectation that the City would distribute those funds within the category based on need. Alternatively, an applicant may choose to contribute funds or in-kind contributions towards a specific item within one or more categories. This method allows the applicant to target a specific need within the City. There is no difference in the number of EAGLE points that would be awarded for broad categories or specific items.

The EAGLE Catalog as a Community Wish List

While this catalog is intended to provide resources for applicants who are required to meet EAGLE standards, the items in the catalog reflect a identified needs within the community. Thus, private citizens, non-EAGLE eligible projects, and businesses or organizations which are interested in making monetary or in-kind contribution to the Ferndale community are invited to utilize the catalog as well.





DOWNTOWN IMPROVEMENTS

Downtown Improvements

Description: Downtown Ferndale (generally that area west of the Nooksack River, South of Washington Avenue, north of Cherry Street and east of Sterling Avenue) is one of the oldest areas of the City, and is the traditional office/ commercial district of the City. The area has also been identified as an area in which pedestrian activities are promoted. Contributions to the Downtown Improvements fund shall be considered separately from the Revolving Loan Fund, which is authorized as a separate EAGLE indicator. The Downtown Improvement Fund may be utilized if authorized by the Ferndale Downtown Development Association (FDDA) to fund improvements, studies, or maintenance of various structures, facilities, or amenities within the area described above. Contributions to this fund shall not be required to identify a specific project, and the FDDA has the authority to expend funds for a variety of projects within the downtown core.

Quantity: Minimum \$5,000

Location: Within the Downtown Core of the City of Ferndale

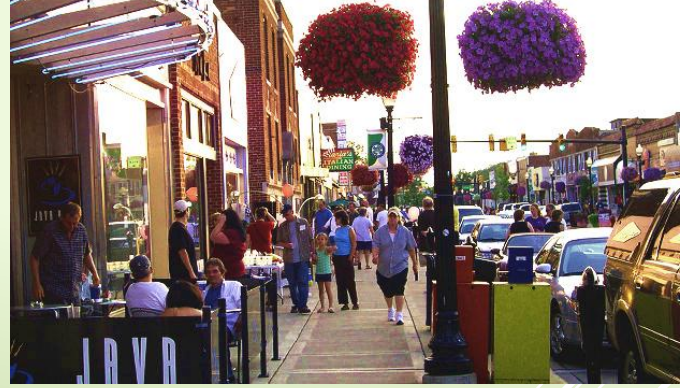
Estimated Cost:

-Initial cost: \$5,000 per EAGLE point

Permit Required: N/A

Potential EAGLE Points: Up to 16 points, pending EAGLE Board and FDDA review and approval.

Opportunity for Partial Contribution: None. Minimum contribution is \$5,000 for one EAGLE point. EAGLE points may be authorized for specific amenities in the following section.



Bicycle Racks

Description: Purchase/build and install a n all-weather minimum 5-bicycle rack within the Downtown Core of the City of Ferndale, pursuant to the Ferndale Parks, Recreation and Trails Master Plan. Following installation, the City will operate and maintain the racks, unless they are incorporated into a private structure.

Quantity: Minimum one 5-bicycle rack

Location: Within the Downtown Core of the City of Ferndale, as per the Ferndale Parks, Recreation and Trails Master Plan

Estimated Cost:

-Initial cost: \$1,700 per rack

Permit Required: Permit fees will be waived if the bicycle rack is installed at a location identified in the City of Ferndale Parks, Recreation and Trails Master Plan. Regular inspections and review may still be required.

Potential EAGLE Points: 3

Opportunity for Partial Contribution: None. Minimum contribution is the purchase and installation of a five-bicycle rack.

Additional Notes: In order to receive EAGLE points, each bicycle rack should contain room for more than five bicycles. The City has established locations within the Downtown core in which community bicycle racks are to be established. If the proposed development is within the downtown core, the project will receive EAGLE points only if the bicycle racks are constructed in addition to and separate from any project-specific requirements or EAGLE indicator points. Two additional points may be provided if the bicycle racks are covered.



Live Wall

Description: Donate towards the implementation of green wall covered in vegetation of various sorts. Not only would the wall be aesthetically pleasing, and raise awareness about sustainability, but there is an opportunity to grow edible plants, or to rotate about what is grown annually

Quantity: One wall, 10 x 15 (size is flexible)

Location: Possibly on a building side near Riverwalk Walk

Estimated Cost:

-Initial: \$90-\$115 / SF

-Maintenance: Plants and soil are \$10-\$20 /SF

Required Permit: ?

Potential Eagle Points: Depends on size/cost

Opportunity for Partial Contribution: No.

Additional Notes: The live wall can go around doors and windows.



Gazebo in the park

Description: Donate towards the implementation of a gazebo in a Ferndale Community Park. The gazebo would provide a central space for members of the community to share music, speeches, presentation, or performances of any kind.

Quantity: One gazebo

Location: TBD

Estimated Cost: \$20,000

-**Initial:** \$15,000 for construction

-**Maintenance:** \$1,000 annually

Required Permit?: Yes.

Potential Eagle Points: 4 points

Opportunity for Partial Contribution: No.

Additional Notes: May need extra funds for garbage cans and landscaping around the area



Extension of Bike Trails

Description: Ferndale currently has a limited number of bike trails. Donate to the implementation of extended bike trails that connect Ferndale with Bellingham's extensive trail system. This would provide increased connectivity within Ferndale and around the region. In addition, it would provide residents would an environmentally friendly, healthy and fun method of transportation.



Quantity: Our goal is 5 miles of unpaved bike trail which can later be expanded.

Location: TBD

Estimated Cost:

- Initial:** \$20,000 per mile for unpaved trail

- Maintenance:** \$1,500 per mile annually

Required Permit?: Yes.

Potential Eagle Points: 21 points

Opportunity for Partial Contribution: Yes, must donate at least one mile worth of funding plus the cost for 5 years of maintenance if partially donating.

Rube Goldberg Machine

Description: Donate towards the implementation of one interactive Rube Goldberg Machine in a public area for visitors and residents to enjoy. The machine would bring art to the public realm while providing an interactive activity for kids and adults alike to enjoy.

Quantity: One interactive machine

Location: TBD

Estimated Cost:

-Initial: \$5,000

-Maintenance: unknown

Required Permit?: No.

Potential Eagle Points: 1 point

Opportunity for Partial Contribution: No.



Lights for walkways

Description: Installing lighting along pathways throughout Ferndale walkways would allow for more walkability and create a better environment for nightlife to develop.

Quantity: about 250 lights

Location: TBD

Estimated Cost:

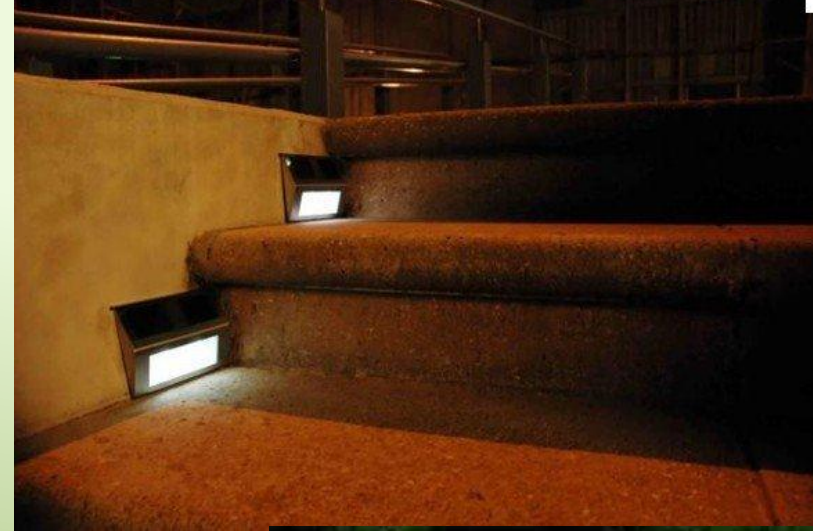
-**Initial:** \$20 per light

-**Maintenance:** \$200 annually to replace broken lights

Required Permit?: No

Potential Eagle Points: 1 point

Opportunity for Partial Contribution: No



Flower Baskets

Description: Purchase and provide or pay for maintenance of no less than twenty-five flower baskets within the Downtown Core of the City of Ferndale for a minimum of three years. Purchase shall include the purchase of flower baskets as well as planting and arrangement of plant materials. Maintenance shall include daily watering and the replacement of dead, diseased, or damaged plants. The City of Ferndale will assume responsibility for maintenance and repair.

Quantity: 25

Location: Throughout downtown on established lighting fixtures

Estimated Cost:

-Initial: \$3,000

-Maintenance: \$2,000 per year

Permit Required: No

Potential EAGLE Points: Purchase, Installation and maintenance of 25 baskets – three year commitment: 3 points

Opportunity for Partial Contribution: Purchase Installation and maintenance of 13 baskets (two years): 1 point. Contribution to Chamber of Commerce flower basket fund for equivalent points. Purchase and installation of 25 baskets for one year: one point

Additional Notes: Please contact the Ferndale Chamber of Commerce to identify the type and size of flower baskets, as well as plantings.



Wind Turbine

Description: Donate to implement one wind turbine near downtown. The wind turbine would very aesthetically pleasing, create awareness of green energy, and serve as a central art piece to downtown. Ferndale sits at a unique location that receives significant wind flow annually. The energy harnessed from the turbine could help light Riverwalk Park or street lights in downtown Ferndale. Purchase would include both to initial purchase of the wind turbine that may cost between \$5,000 and \$10,000 depending on the design. An additional \$500 annually would be set aside for maintenance of the turbine.



Quantity: One wind turbine

Location: To be determined, but it will be near downtown.

Estimated Cost:

- Initial cost: \$7,000
- Maintenance: \$500 per year

Required Permit?: Yes?

Potential Eagle Points: 2 points

Opportunity for Partial Contribution: No.

Notes: See Bellingham's windmill near the downtown bus station

'Welcome to Ferndale' Sign

Description: Donate to help implement one welcoming sign in Ferndale worth 5 EAGLE points. The "Welcome to Ferndale" Sign could be located near the Portal Way freeway exit. The sign would provide guests with a sense of place while giving pride to the citizens of Ferndale.

Quantity: One sign

Location: To be determined

Estimated Cost:

-Initial:\$25,000

-Maintenance: \$1,000 annually

Required Permit?: No.

Potential Eagle Points: 5 points

Opportunity for Partial Contribution: No.



Drinking Fountains

Description: Implement drinking fountains serving different purposes around Ferndale Public Parks. there are several different types of fountains available that vary depending on cost and services provided.

Quantity: 5 drinking fountains

Location: Throughout Ferndale Public Parks, or in downtown

Estimated Cost:

Initial: \$1,000-\$5,000 per fountain depending on type;

Maintenance: \$1,000 annually

Required Permit?: Yes

Potential Eagle Points: 1-5 points depending on contribution

Opportunity for Partial Contribution: Yes.



Musical Rainwater Drains

Description: Purchase a rainwater enhancement system that runs water through a series of drains and pipes starting from the top of the building and running to the bottom. The system involves certain mechanisms which help to create a musical sound. It not only sounds pleasing, but is attractive to the eye, and has the potential to attract visitors from out of town. The system can either be purchased from an artist who has completed similar systems in the past, or recreated using simple piping, metal sheets and cones (as seen in photo).

Quantity: One Musical Rainwater system

Location: Unused building fronts in downtown

Estimated Cost:

Initial: About \$5,000

Maintenance: \$500 annually

Required Permit?: Permission from building owners

Potential Eagle Points: 2 points

Opportunity for Partial Contribution: No

Additional Notes: Artists of system in above photo- Annette Paul, Christopher Rossner, and Andre Temple.



Revamp Crosswalks

Description: Purchase at least one new, fun and interactive crosswalk. The ultimate goal is to have at least four. These innovative crosswalks have been implemented elsewhere around the country and were found to improve safety, make streets feel more accessible to pedestrians, and help to beautify the city.

Quantity: Four crosswalks at a popular intersection, could expand later on.

Location: Intersection at Main St. and 2nd Ave., there is a possibility to extend the location further.

Estimated Cost:

Initial: \$2,000 per crosswalk x 4 crosswalks = \$8,000

Maintenance: \$1,000 annually

Required Permit?: Yes?

Potential Eagle Points: 2 points

Opportunity for Partial Contribution: Yes, the purchase of two crosswalks at a time is possible, but doing so would account for only one EAGLE point.



CITY PARKS



STAR Park

Description: For several years the Parks, Recreation & Trails Advisory Board has put immense passion and effort into bringing a major playground and recreational facility to the heart of Ferndale. In 2013, the Ferndale City Council designated land in Pioneer Park, just south of the fenced in area housing the historic log cabins, as the Star Park project area as well as a trail heading north to where an existing playground sits. This playground would likely be replaced with more adult features, such as ball courts, potentially barbecue pits and exercise equipment.



Quantity: N/A

Location: At various parks Citywide, as determined by the applicant and the PRTAB.

Estimated Cost:

-**Initial cost:** \$5,000 per EAGLE point

-**Maintenance:** ?

Permit Required: N/A

Potential EAGLE Points: 1-16.

Opportunity for Partial Contribution: Minimum contribution \$5,000 (or equivalent)

City Parks

Description: STAR Park is intended to continue enhancements to Pioneer Park and its historic cabins, which are a jewel in the crown of Ferndale's parks system. STAR Park will be located just south of Pioneer Park's historic cabins and at over 12,000 square feet in size, the playground will be the largest in Ferndale. Special attention has been paid towards ensuring the park is highly accessible for children of all ages and abilities.



The park will be built primarily by volunteers, with a target construction date of Summer 2016.

Quantity: N/A

Location: Within Pioneer Park, south of historic Pioneer cabins

Estimated Cost: Various (playground components vary)

Permit Required: City responsibility

Potential EAGLE Points: 1-20.

Opportunity for Partial Contribution: Minimum contribution \$5,000 (or equivalent)

City Park Benches

Description: Purchase and installation of four park benches, following consultation with the Ferndale Parks, Recreation and Trails Advisory Board (PRTAB). Maintenance responsibilities will be assumed by the City of Ferndale following installation.

Quantity: Four or more

Location: At various parks Citywide, as determined by the applicant and the PRTAB.

Estimated Cost:

Initial cost: \$1,250 per bench (minimum four benches)

Maintenance: ?

Permit Required: Permit fees will be waived, although review and inspections are required.

Potential EAGLE Points: 1-16, depending on need

Opportunity for Partial Contribution: In lieu payment (minimum \$5,000)



Ferndale Community Dog Park

Description: Donate to the purchase of land and the necessities needed to implement a dog park in Ferndale including fencing, dog drinking fountains, trash cans, benches, and stations for dog clean-up bags. The park will also include separate areas for different sized dogs, including an area exclusively for puppies under 6 months old.



Quantity: One park, two drinking fountains, three stations for dog clean-up bags, four benches and four trash cans.

Location: TBD

Estimated Cost:

-Initial:

-Maintenance:

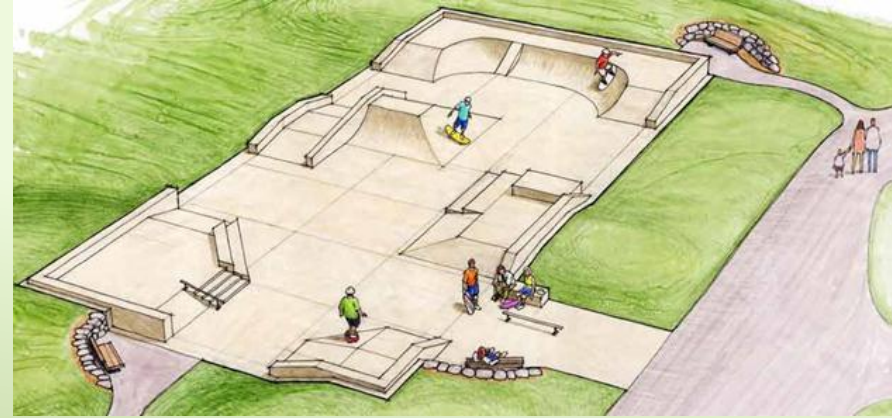
Required Permit?: Yes

Potential Eagle Points:

Opportunity for Partial Contribution: Yes. If partial contribution is desired, the park can be implemented in stages so that it can remain in use despite not having complete funding.

New Ferndale Skate Park

Description: Purchase or donate towards a new skate park for the youth of Ferndale to replace the existing park that contains only two metal bars and dilapidated bleachers. The implementation of a new skate park would provide an activity to elementary, middle and high school students as a positive and active after school activity.



Quantity: One Skate Park for the city of Ferndale

Location: 1917 Main Street, Ferndale, WA

Estimated Cost:

-Initial: ~\$40 per sq. ft., at 3,000 sq. ft. = \$120,000

-Maintenance:

Required Permit?: No?

Potential Eagle Points: 24 points

Opportunity for Partial Contribution: Yes, must donate at least half.

Second Avenue Roundabout Art

Description: The City of Ferndale is in the process of constructing a major road improvement project in the vicinity of the Portal Way/ Interstate Five freeway interchange. Included in the “Second Avenue Extension” is a four-leg roundabout. Public art and/or landscaping has been suggested by the community and the City Council. EAGLE points shall be awarded for establishing the purchase or funding of the artwork.

Quantity: 1

Location: Second Avenue Roundabout, southwest of the Portal Way/ I-5 exit

Estimated Cost:

-Initial cost: \$5,000-\$80,000

Permit Required: An Encroachment permit will be required if the applicant seeks to install the artwork

Potential EAGLE Points: 1-16, based on contribution

Opportunity for Partial Contribution: Based on specific proposal. All design concepts must be approved by the City of Ferndale. Proposed artwork/ sculptures shall be reviewed by the City of Ferndale Arts Commission



Disc Golf Scorecards

Description: With the help of community volunteer groups, the City of Ferndale has established a popular no-fee 18-hole disc golf course at Vanderyacht Park. Users have requested score cards to be made available onsite. EAGLE points shall be awarded for an applicant who supplies score cards in an attractive all-weather container. Points shall be awarded for the printing of score cards and the purchase and installation of an all-weather container

The applicant may include the company name, logo, and a coupon on scorecards, but must also provide additional space for the City of Ferndale and Ferndale Chamber of Commerce logos, as well as space for at least two other local businesses. Scorecards must be printed on recycled paper and include a reminder to "Please Recycle", as well as golf course rules. For more information and preferred design, contact Dennis Rhodes, Community Development Department Director, at (360) 384-4006

Quantity: 1,000 score cards per year, 3 year commitment, one all-weather scorecard container

Location: 1945 Washington Avenue (Vanderyacht Park)

Estimated Cost:

-Initial cost: \$700 (Brochures and Container)

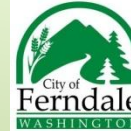
Permit Required: No

Potential EAGLE Points: 1

Opportunity for Partial Contribution: Based on Specific Proposal. May include park or course beautification.

HOLE	1	2	3	4	5	6	7	8	9
DISTANCE	164	190	200	171	233	338	242	389	587
PAR									

VANDERYACHT PARK DISC GOLF



HOLE	10	11	12	13	14	15	16	17	18
DISTANCE	209	260	245	273	310	441	328	518	699
PAR									

Disc Golf Tee Signs

Description: With the help of community volunteer groups, the City of Ferndale has established a popular no-fee 18-hole disc golf course at Vanderyacht Park. Users have requested tee signs within the golf course that will help to identify the course layout, obstacles, and rules. A minimum of 9 tee signs are requested, and may include only the course layout or attached sponsor signs for advertisements (see picture). The donating organization may advertise on up to three of nine tees, but must reserve the remaining six tees for other sponsors.

For more information and preferred design, contact Dennis Rhodes, Community Development Department Director, at (360) 384-4006

Quantity: Nine tee signs

Location: 1945 Washington Avenue (Vanderyacht Park)

Estimated Cost:

-Purchase and Installation: \$1,000 (9 non-sponsor tee signs), \$1,700 (9 sponsor tee signs)

Permit Required: No

Potential EAGLE Points: 1

Opportunity for Partial Contribution: Based on Specific Proposal. May include park or course beautification.



"Mutt Mitt" Pet Waste Disposal Bags

Description: Provide "Mutt Mitts" to refill City supplies at public parks over a one-year period. A \$3,000 contribution is equal to approximately 20,000 mitts. Implementation of pet waste disposal bags would help to keep out parks dog-friendly and clean for everyone to enjoy.

Quantity: 20,000 mutt mitts

Location: Citywide (various public parks)

Estimated Cost:

-Purchase and Installation: \$3,000

Permit Required: No

Potential EAGLE Points: 1

Opportunity for Partial Contribution: None.

The City may identify additional locations for Mutt Mitt dispensers, and may accept contributions for purchase and installation.



Public Hammocks

Description: Donate towards the implementation of 5 hammocks supported by several large wood support stakes in Pioneer Park next to the Nooksack River. The hammocks would provide a fun and interactive feature in the park for relaxing and enjoying the river on sunny days.



Quantity: 5 hammocks and 10 support stakes

Location: Pioneer Park

Estimated Cost:

-**Initial:** \$1000 for hammocks; \$4000 for support stakes

-**Maintenance:** \$500 annually

Required Permit?: No.

Potential Eagle Points: 1 point

Opportunity for Partial Contribution: No.

Outdoor Chess Boards

Description: Donate towards the implementation of three community chess boards that help to inspire an intellectual challenge while bringing members of the community, young and old, together. Must donate at least \$5,000 for the purchase and maintenance of two chessboards, the pieces and the chairs.

Quantity: 6 benches, 3 chess tables

Location: TBD

Estimated Cost:

-**Initial:** \$2,000 per table/set of benches

-**Maintenance:** \$1,000 annually

Required Permit?: No.

Potential Eagle Points: 2 points

Opportunity for Partial Contribution: No.



Outdoor Chalkboard

Description: Donate funds to help implement a community chalkboard in a public space. In the spring and summer, the chalkboard will serve as a popular space for creative expression as well as an opportunity for public artwork.

Quantity: 1 chalkboard with several buckets of chalk

Location: TBD

Estimated Cost:

-**Initial:** \$2,000

-**Maintenance:** \$500 annually

Required Permit?: No permit, but permission from building owners.

Potential Eagle Points: 1 point

Opportunity for Partial Contribution: No.



PUBLIC FACILITIES



Ferndale Wayfinding System

Description: Purchase five signs for installation as a wayfinding system throughout Ferndale, directing residents and visitors to local parks, schools, or to downtown. Either donate in whole and receive 2 EAGLE points, or partially and receive 1 EAGLE point.

Quantity: Five Signs

Location: To be determined

Estimated Cost:

-**Initial cost:** \$10,000

-**Maintenance:**

Permit Required: No?

Potential EAGLE Points: 2

Opportunity for Partial Contribution: Yes, receive one EAGLE point with the donation of \$5,000 towards the wayfinding system.



City Council Chambers Technology Update

Description: Purchase and installation of either a permanent screen and projector, or a large-format flat-screen television and CPU. For additional points, improved interior speakers, equipment table, and document projector are requested. For maximum points, four CPU screens may be provided in addition to other equipment, in order to provide Councilmembers with the ability to view presentations from their seats.

Quantity: Minimum: Install and link existing City projector, purchase automated screen.

Moderate: Purchase and install 50"+ flat-screen TV and Windows-Compatible CPU, including wireless mouse and presentation capability of up to 30'. Maximum: Satisfy Moderate requirements, as well as purchase and installation of a minimum of four table-mounted CPU screens

Location: 5694 Second Avenue (Council Chambers)

Estimated Cost:

-Initial Cost:

-Maintenance:

Permit Required: No.

Potential EAGLE Points:

Opportunity for Partial Contribution:



City Website Redesign

Description: Redesign of the City of Ferndale website. The current website utilizes dated technology which limits the City's ability to make rapid changes and to add different media (pictures, video, text) to the site. The City estimates that a full contribution of \$20,000 will be sufficient to update and rebrand the website, including the transfer of data from the existing website to the new one. The City would contract with a web design professional for the completion of work.

Location: 2095 Main Street (City Hall)

Estimated Cost: \$20,000

Permit Required: No

Potential EAGLE Points: Up to seven points

Opportunity for Partial Contribution: \$10,000 minimum contribution required.



MISCELLANEOUS



Ferndale Tree Initiative

Description: The City of Ferndale is a “Tree City USA” jurisdiction, and has committed to preserving and enhancing trees throughout the community. In addition, the City hopes to establish a free program to plant street trees along within the public right of way, between the street and residences, businesses, and public areas. In order to meet this objective, applicants may contribute trees or in lieu funds to offset the costs of tree purchase, storage, maintenance, and planting. The City estimates the cost of purchase, planting and tree maintenance for a two-year period is approximately \$80. Ultimately, the City hopes to plant 1,000 trees in a three year period.

Quantity: 65 trees or \$5,000, up to 780 trees or \$80,000

Location: Citywide, generally within the Public Right of Way or City Parks

Estimated Cost:

-Purchase, Installation, and Maintenance for Two

Years: \$5,000 (65 trees)

Permit Required: No

Potential EAGLE Points: 1-14

Opportunity for Partial Contribution: Based on specific proposal.



Economic Development Strategy Funding

Description: The City of Ferndale and the Ferndale Economic Development Committee are in the process of developing a coordinated economic development strategy. Such a strategy may include, but is not limited to an inventory of existing businesses, an evaluation of the area and demographics within the Ferndale market, the identification of specific business creation and retention strategies, and the establishment of a coordinated “Main Street” program. Ideally, the City will support the development of this study by contracting with a professional consulting firm. EAGLE points will be awarded for monetary contributions to fund this report.

Quantity: One Study

Location: Citywide

Estimated Cost:

-Purchase and Installation: \$70,000

Permit Required: No

Potential EAGLE Points: 1-14

Opportunity for Partial Contribution: Based on specific proposal. Components of the larger study may be analyzed separately from the primary study and may be eligible for separate funding sources.



No Dumping Fish Stencil And Paint

Description: Stormwater within the City of Ferndale drains to the Nooksack River – a fish-bearing water body. A \$3,000 contribution is equivalent to forty stencils and paint. Stenciling will be performed by City staff and volunteers.

Quantity: Forty stencils and equivalent paint.

Location: Citywide

Estimated Cost:

-Initial Installation: \$3,000

-Maintenance:

Permit Required: No

Potential EAGLE Points: 1

Opportunity for Partial Contribution: None

NO DUMPING



DRAINS TO RIVER

Funding for Public Art

Description: Public art lends to the look and feel of an urban area, and helps to define a unique sense of place. The City of Ferndale has established the Ferndale Arts Commission in order to identify appropriate locations for public artwork on City property, to review proposed artwork that may be placed on such property, and to assist individuals and organizations who wish to display artwork.

Quantity: Varies

Location: Citywide, on public property (including within public right of ways) owned by the City of Ferndale.

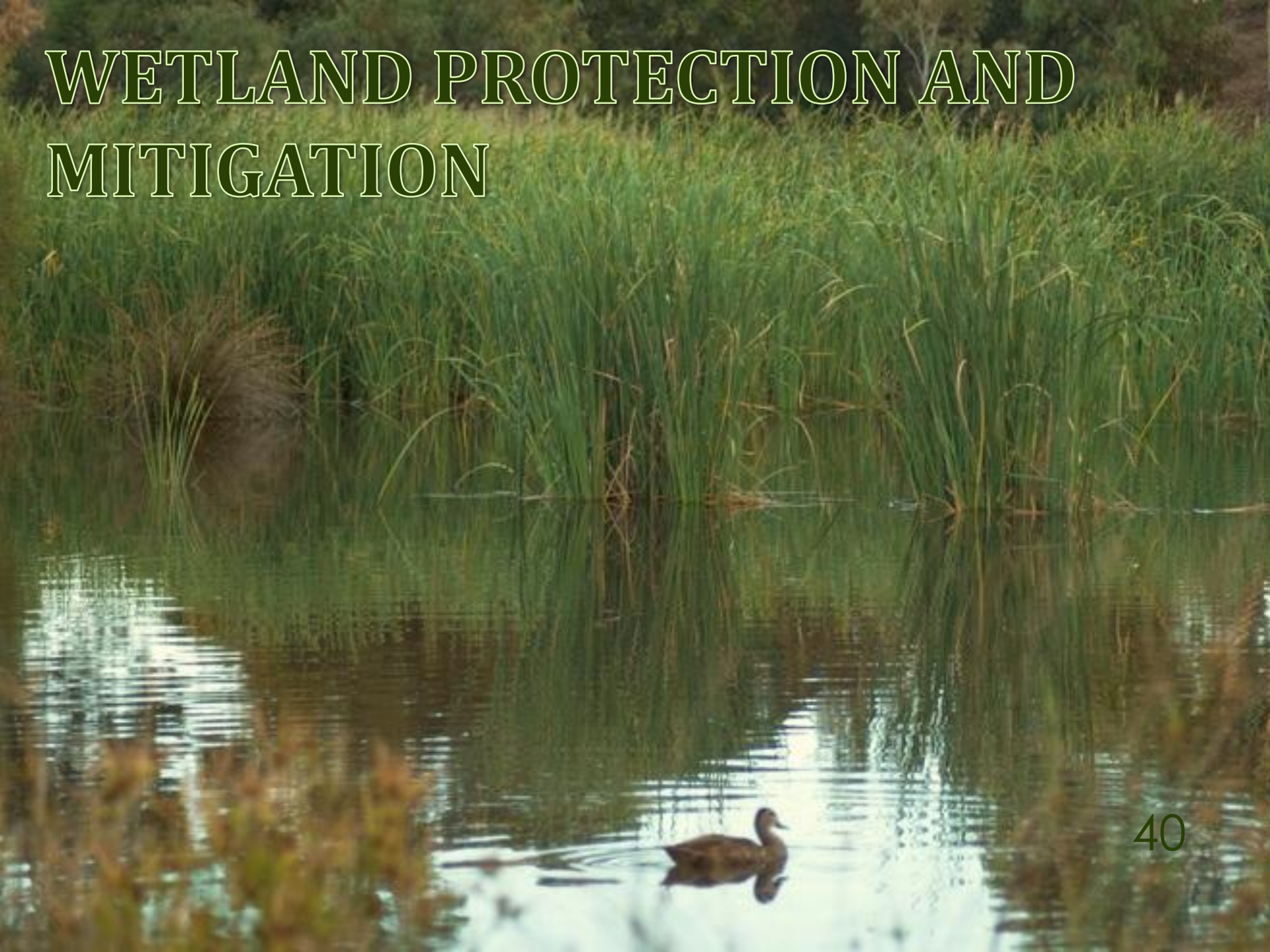
Estimated Cost: Varies.

Permit Required: Varies depending on artwork and location.

Potential EAGLE Points: 1 per \$3,000 contribution
Opportunity for Partial Contribution: Yes (minimum \$3,000)



WETLAND PROTECTION AND MITIGATION



Wetland Educational Program

Description: Donate towards a wetland education program for the youth of Ferndale to learn about the importance of wetland conservation. There is a possibility of working with Ferndale schools to incorporate wetland education as a class field trip.

Quantity: Flexible

Location: Indoor education at Ferndale Public Library; outdoor education in wetland behind library.

Estimated Cost: ~\$10 per student

Required Permit?: No

Potential Eagle Points: 1 point

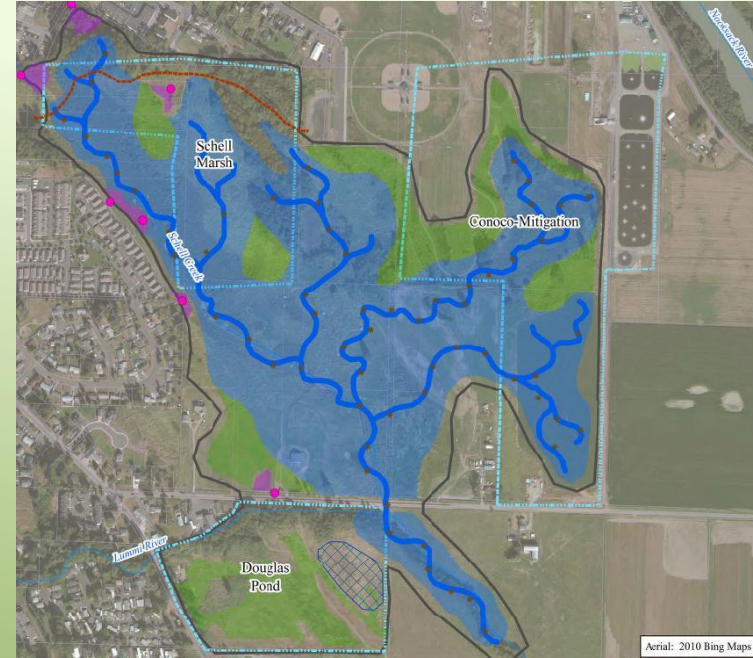
Opportunity for Partial Contribution: No.



Schell Wetland Complex Mitigation

Description: The City of Ferndale proposes to restore up to 183 acres of degraded wetland/marsh area immediately adjacent to Downtown Ferndale. If successful, private and public development projects will contribute “in lieu” fees to fund this important ecological enhancement.

The first phase of this project will require a professional wetland and biological evaluation, including an ecologically-valid mitigation program. The City estimates that this initial phase will cost approximately \$25,000 and is eligible for EAGLE points.



Quantity: Varies

Location: Immediately south of Ferndale City Hall and the Ferndale Public Library (see photo above)

Estimated Cost: \$25,000

Required Permit?: Yes – City responsibility

Potential Eagle Points: 8 points (\$3,000 per point)

Opportunity for Partial Contribution: Yes.



HISTORIC PRESERVATION



DONATIONS TO LOCAL ORGANIZATIONS

Donation to Ferndale Public Schools

Description: Donate funds to Ferndale High School to support their educational needs including technology, books, and other materials.

Quantity: N/A

Location: Various locations

Estimated Cost: at least \$5,000

Required Permit?: No.

Potential Eagle Points: One EAGLE point for every \$5000 donated

Opportunity for Partial Contribution: No.



Ferndale Boys and Girls Club

Description: The Boys & Girls Clubs of Whatcom County, Ferndale Branch has been serving kids in Ferndale and the surrounding area since 1987. After losing the longtime home in Pioneer Park to a fire on January 1, 2007, the Club was relocated and a Capital Campaign was initiated. The Campaign wrapped up in January 2010, raising nearly \$5 Million and the new Ferndale Clubhouse opened for operation in June 2010 in Pioneer Park near the former facility. The 21,000 sf facility serves nearly 2000 school-age children per year in after school and athletic programs, along with playing a vital role as a community event and celebration facility.



The Club's overall program takes a holistic approach, that offers a well-rounded selection of programs: Education & Career Development; Character & Leadership Development; Health & Life Skills; Fine & Performing Arts; Sports, Fitness & Recreation. There are two technology labs, a dedicated Teen Center, commercial kitchen, full court gymnasium, multiple meeting spaces and a myriad of youth and community minded program spaces.

Beyond financial gifts, donors could make the following in-kind contributions: Athletic equipment, snack supplies, gift certificates to local businesses for groceries, auto repair, sporting goods, hardware, books, etc. Please call the Ferndale Club if you have specific questions regarding financial or in-kind contributions. Businesses may also choose to contribute to the Club through the "Sponsor a Child" program. It costs the Club \$365 per child, per year to keep the doors open. Sponsoring a Child is the most direct route to make sure your dollars go to kids, where the dollars are needed the most. The Club is not able to accept used clothing or used computer equipment.

Estimated Cost: \$5,000 per EAGLE point, or equivalent in-kind donations. Sponsor fourteen children (estimated cost: \$5,110.00)

Potential EAGLE Points: 1-16

Opportunity for Partial Contribution: After initial donation for \$10,000, donations are accepted in \$5,000 increments for 1 extra EAGLE point per \$5,000.

Ferndale Food Bank

Description: The Ferndale Food Banks is a critical community recourse serving local children, adults and seniors. If someone is in need, all they have to do is show up with a photo ID and proof of residence within the area. Their mission is to serve individuals that are hungry and in need with dignity and respect.

Quantity: N/A

Location: 1671 Main Street, Ferndale, WA 98248

Estimated Cost: Minimum donation of \$10,000

Required Permit?: No.

Potential Eagle Points: 2 points for \$10,000 donated

Opportunity for Partial Contribution: After initial donation for \$10,000, donations are accepted in \$5,000 increments for 1 extra EAGLE point per \$5,000.



Northwest Youth Services

Description: Donate Northwest Youth Services that funds services for homeless, runaway and at-risk teens. According to their website, "Since 1976, Northwest Youth Services has been the doorway to safety and the pathway to progress for thousands of young lives. Much has changed in our communities during those years. What has not changed is our commitment to supporting the uniqueness of each youth served."

Location: 1020 N. State St. Bellingham, WA 98225

Estimated Cost: Minimum donation of \$10,000

Potential Eagle Points: 2 points for \$10,000 donated

Opportunity for Partial Contribution: After initial donation for \$10,000, donations are accepted in \$5,000 increments for 1 extra EAGLE point per \$5,000.



Ferndale Senior Center (Jet Oldsters)

Description: Donate to the vibrant senior community, Ferndale Senior Center, where they seek to promote the general welfare of Ferndale senior citizens through friendship, health and happiness.

Location: 1999 Cherry St. Ferndale, WA 98248

Estimated Cost:-Initial: Minimum donation of \$10,000

Potential Eagle Points: 2 points for \$10,000 donated

Opportunity for Partial Contribution: After initial donation for \$10,000, donations are accepted in \$5,000 increments for 1 extra EAGLE point per \$5,000.



Ferndale Senior
ACTIVITYCENTER
where friends gather

Bellingham-Whatcom County Commission Against Domestic Violence

Description: Donate to Bellingham-Whatcom County Commission Against Domestic Violence that aims to create a community safe from physical, emotional, and sexual violence and coercive control by promoting individual and family safety, accountability, cultural competency and holistic, community-based solutions.

Location: 1407 Commercial Street, Bellingham, WA 98225

Estimated Cost: Minimum donation of \$10,000

Potential Eagle Points: 2 points for \$10,000 donated

Opportunity for Partial Contribution: After initial donation for \$10,000, donations are accepted in \$5,000 increments for 1 extra EAGLE point per \$5,000.



Habitat for Humanity

Description: Donate to Habitat for Humanity in Whatcom which supports our community by offering a hand-up, not a hand-out, to families striving for a path out of poverty. We work in partnership with low-income families to build simple, decent homes where they can live and grow.

Location: 1385 Admiral Way, Ferndale, WA 98248

Estimated Cost: Minimum donation of \$10,000

Potential Eagle Points: 2 points for \$10,000 donated

Opportunity for Partial Contribution: After initial donation for \$10,000, donations are accepted in \$5,000 increments for 1 extra EAGLE point per \$5,000.



The American Legion

Description: Donate to the nation's largest wartime veterans service organization, committed to mentoring youth and sponsorship of wholesome programs in our communities, advocating patriotism and honor, promoting strong national security, and continued devotion to our fellow service members and veterans.

Location: 5537 2nd Avenue, Ferndale, WA 98248

Estimated Cost: Minimum donation of \$10,000

Potential Eagle Points: 2 points for \$10,000 donated

Opportunity for Partial Contribution: After initial donation for \$10,000, donations are accepted in \$5,000 increments for 1 extra EAGLE point per \$5,000.



Whatcom County Humane Society

Description: Donate a minimum of \$10,000 to the Whatcom County Humane Society. They are an integral part of our community, caring for numerous animals and standing up for animals with legal, moral, and ethical consideration and protection. Their vision is to see all animals in our community treated with kindness, respect, and compassion. In addition, the humane society has educational programs aiming to promote responsible animal care to prevent abuse, neglect and overpopulation.

Location: 2172 Division St Bellingham, WA

Estimated Cost: Minimum donation of \$10,000

Potential Eagle Points: 2 points for \$10,000 donated

Opportunity for Partial Contribution: After initial donation for \$10,000, donations are accepted in \$5,000 increments for 1 extra EAGLE point per \$5,000.



Whatcom Humane Society





TRANSPORTATION

Thornton Overcrossing Initial Design

Description: The City of Ferndale has identified the Thornton overcrossing as a major infrastructure project that will become necessary prior to 2030. The overcrossing would consist of raising Thornton Street above the existing railroad, in order to connect with Second Avenue to the south. Future phases may extend the crossing to the east side of Interstate Five, connecting to Portal Way. The first phase of the project is anticipated to cost approximately \$17 million. EAGLE contributions will likely be utilized for preliminary design in order to generate development concepts and more accurate costs.

Quantity: One Study

Location: Citywide

Estimated Cost: Unknown – up to \$60,000 contribution may be accepted for EAGLE points.

Permit Required: No

Potential EAGLE Points: 1-20

Opportunity for Partial Contribution: Based on specific proposal. The City may not be able to commit to funding a full study if only partial payment is received from private interests.

