

**City of Ferndale
Well Water Supply Project
ADDENDUM NO. 1
March 28, 2011**

To All Contract Document Holders:

You are hereby notified of the following additions to the Plans, Specifications and other documents comprising the Contract Documents for the City of Ferndale, Well Water Supply Project.

Instructions to Bidders

Page 3 – 11. Completion Time

Add the following sentence to the end of the last paragraph of this section:

2010 average monthly City payment to the Whatcom County PUD No. 1 for water and chemicals was \$29,500.

Bid Forms

Page 9, Schedule of Prices

Bid Item 17 – Douglas Well Pump Station Automatic Control and Security – Modify the stated cost to read \$121,440.00. Delete \$121,44.00

Technical Specifications

Page 11-49, 8. Hypochlorite Storage Tank

Replace the 1st sentence with:

The freshly produced hypochlorite solution shall be stored in a tank as specified in Section **11.62.73.16 Chemical Storage Tank (Page 11-24)**.

Page 16-43, 16.91.2 Diesel Engine Generator Set

Part 2 - Products

Manufacturers

Replace the sentence with:

The engine generator system shall be Cummins/Onan **or Kohler**, no **other** substitutions.

Page 17-17, 3.D Backwash Operations

Modify the Text as follows:

Air Scour Process

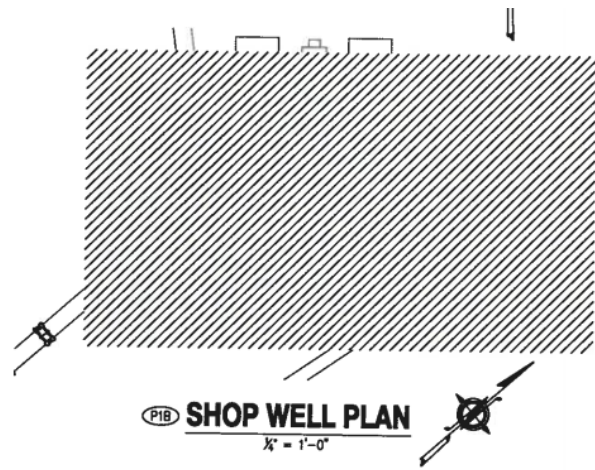
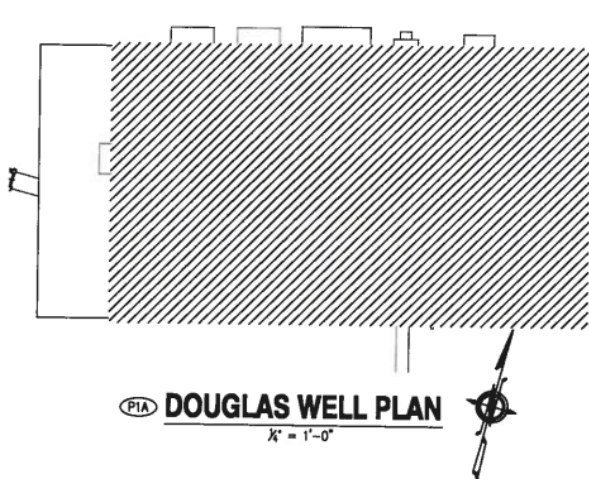
At the start of the air scour process, the filter cell's effluent valve will close and the air supply valve [A-006 to A-013] will open. The blower [B-501] will turn on and provide air to the filter at 170 scfm for an operator adjustable duration, initially set at 5 minutes.

After an operator adjustable ~~duration~~ **delay**, initially set at 4 minutes, open the backwash supply valve and start the backwash supply pump [P-701]. Gradually increase the backwash water rate up to **an operator adjustable flow rate, initially set at 280 gpm**, until the air scour duration has completed.

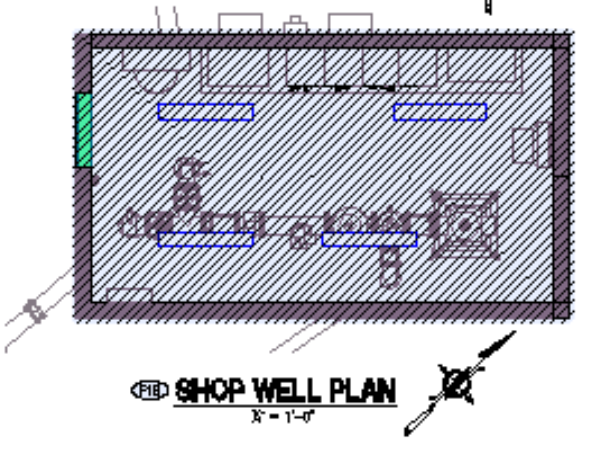
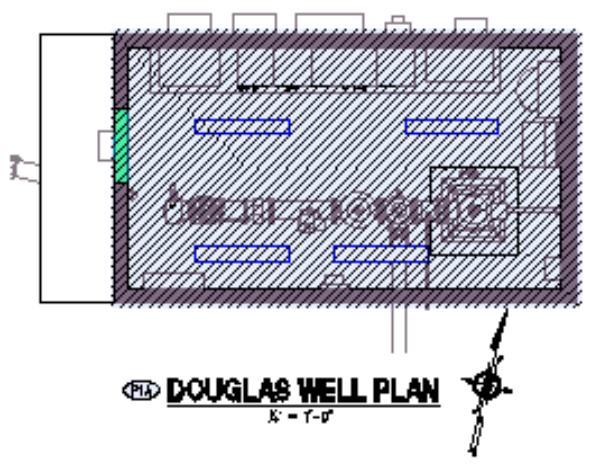
Plans

All Plans

Print sets from Applied Digital Imaging produced prior to March 26, 2011 may have print errors on them due to printer driver software conflicts with Autodesk Design Review 2011 ® software. Examples of such errors are shown below. All planholders prior to March 26, 2011 will be provided with a new 1/2 size color planset without charge. We apologize for the inconvenience. If planholders are utilizing the downloaded pdf or dwf plansets from WCR Publications, please check any printed sets to verify they are printed correctly. Note colors may not match as the errors are scans of printed material and corrections are from the dwf planset.



Page 2 of 75 with Error



Page 2 of 75 printed correctly

| | |
|--------------------------------------------------|-----------------------------|
| SCALE: SHOWN | |
| | |
| DRAWING IS NOT TO SCALE IF BAR IS NOT 2" LONG | |
| PLT: 10 | |
| ENGINEER: SMK | |
| REVIEWER: DJM | |
| DATE: MAR 2, 2011 | |
| CLIENT: FER | |
| JOB NO.: 410-069 | SHEET NO. 3 75 |

Page 3 of 75 with Error

| | |
|--------------------------------------------------|-----------------------------|
| SCALE: SHOWN | |
| | |
| DRAWING IS NOT TO SCALE IF BAR IS NOT 2" LONG | |
| PLT: 10 | |
| ENGINEER: SMK | |
| REVIEWER: DJM | |
| DATE: MAR 2, 2011 | SHEET NO. 3 75 |
| CLIENT: FER | |
| JOB NO.: 410-069 | |
| FILENAME: GWTP-D-CIV01 | |

Page 3 of 75 printed correctly

| |
|----------------------|
| GENERAL NOTES |
| |

Page 51 of 75 with Error

| | |
|-------------------------------------------------------------------|------------------------------|
| BOTHELL 425.661.8400 12100 NE 195th Street, Suite 100 | |
| EAST WENATCHEE 808.866.8800 300 Simon Street, Suite 5 | |
| RICHLAND 808.848.8181 114 Columbia Point Drive, Suite C | |
| SILVERDALE 360.878.7880 2021 NW Myre Rd, Suite 107 | |
| TACOMA 253.878.8088 621 Pacific Avenue Suite 104 | |
| SCALE: SHOWN | |
| | |
| DRAWING IS NOT TO SCALE IF BAR IS NOT 2" LONG | |
| PLT: 1 | |
| ENGINEER: MWB | |
| REVIEWER: CMR | SHEET NO. 51 75 |
| DATE: FEB 7, 2011 | |
| CLIENT: FER | |
| JOB NO.: 410-069 | |
| FILENAME: GWTP-D-ELEC01 | |

| GENERAL NOTES |
|----------------------------------------------------------------------------------------------------------------------------------------------------------------------------------------------------------------------------------------------------------------------------------------------------------------------------------------------------------------------------------------------------------------------------------------|
| 1. THIS IS A STANDARD LEGEND. NOT ALL OF THE INFORMATION SHOWN ON THIS PAGE WILL APPEAR IN THIS SET OF PLANS. |
| 2. THESE DRAWINGS ARE DIAGRAMMATIC ONLY; EXACT LOCATIONS OF ELECTRICAL EQUIPMENT SHALL BE DETERMINED IN THE FIELD BY THE CONTRACTOR. THE INSTALLATION OF ALL EQUIPMENT SHOWN ON THESE DRAWINGS OR DESCRIBED IN THE SPECIFICATIONS SHALL CONFORM TO THE REQUIREMENTS SET FORTH IN THE LATEST EDITIONS OF ALL APPLICABLE CODES AND UTILITY COMPANY STANDARDS. CONTACT THE UTILITY COMPANY REPRESENTATIVES AND VERIFY THEIR REQUIREMENTS. |
| 3. NOTIFY THE ENGINEER IMMEDIATELY IF CONFLICTS IN EQUIPMENT LOCATIONS ARE DISCOVERED OR IF PROBLEMS ARISE DUE TO FIELD CONDITIONS, LACK OF INFORMATION OR ANY OTHER REASON. NO PAYMENT WILL BE MADE FOR CHANGES WHICH HAVE NOT BEEN FAVORABLY REVIEWED BY THE ENGINEER. |

BOTHELL #25051 5000
12100 NE 195th Street, Suite 100

EAST WENATCHEE 300.055.2000
300 Simon Street, Suite 5

RICHLAND 300.045.3101
114 Columbia Point Drive, Suite C

SILVERDALE 200.075.7000
2021 NW Nhyra Rd, Suite 107

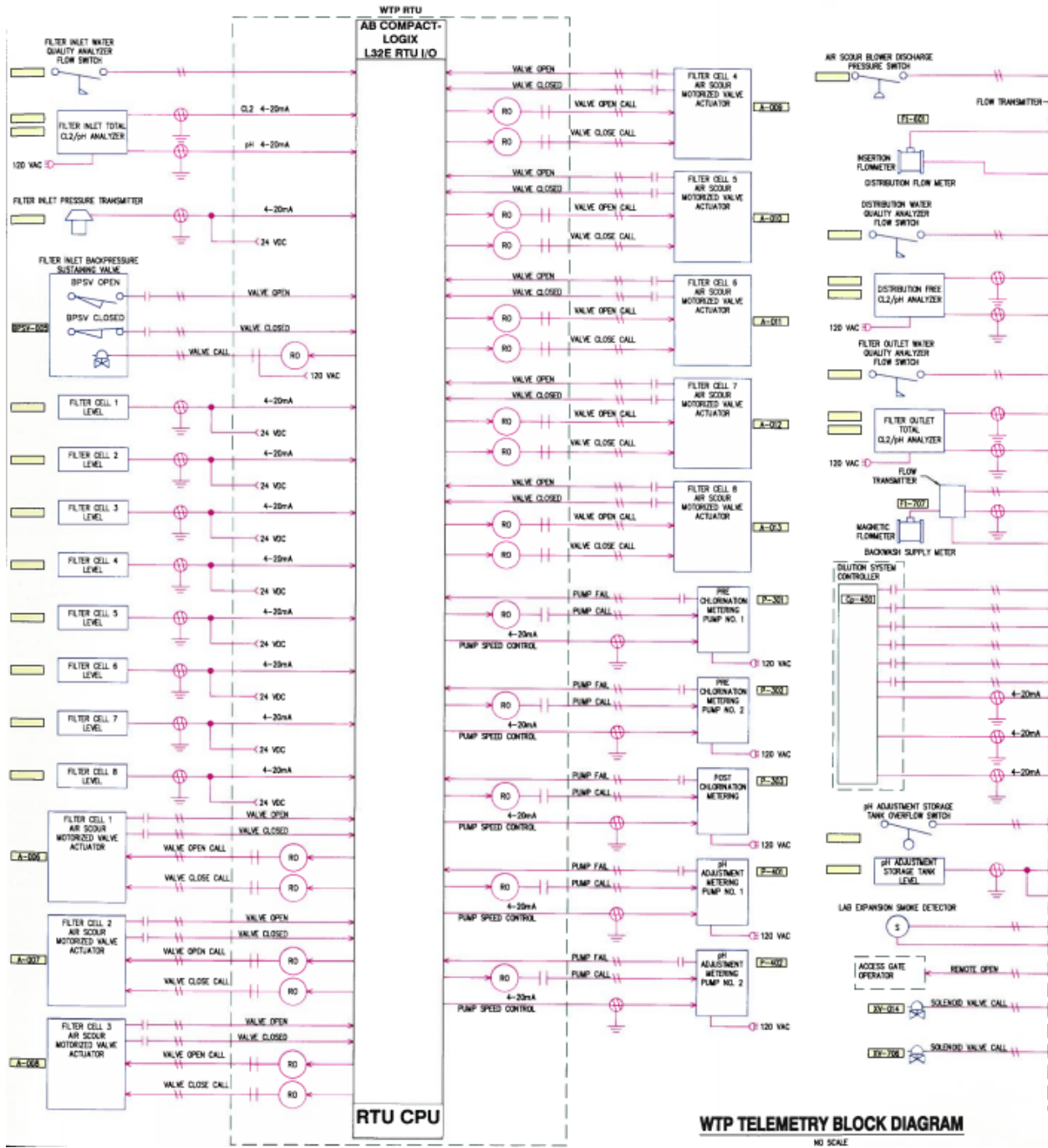
TACOMA 252.272.2030
821 Pacific Avenue Suite 104

SCALE: SHOWN

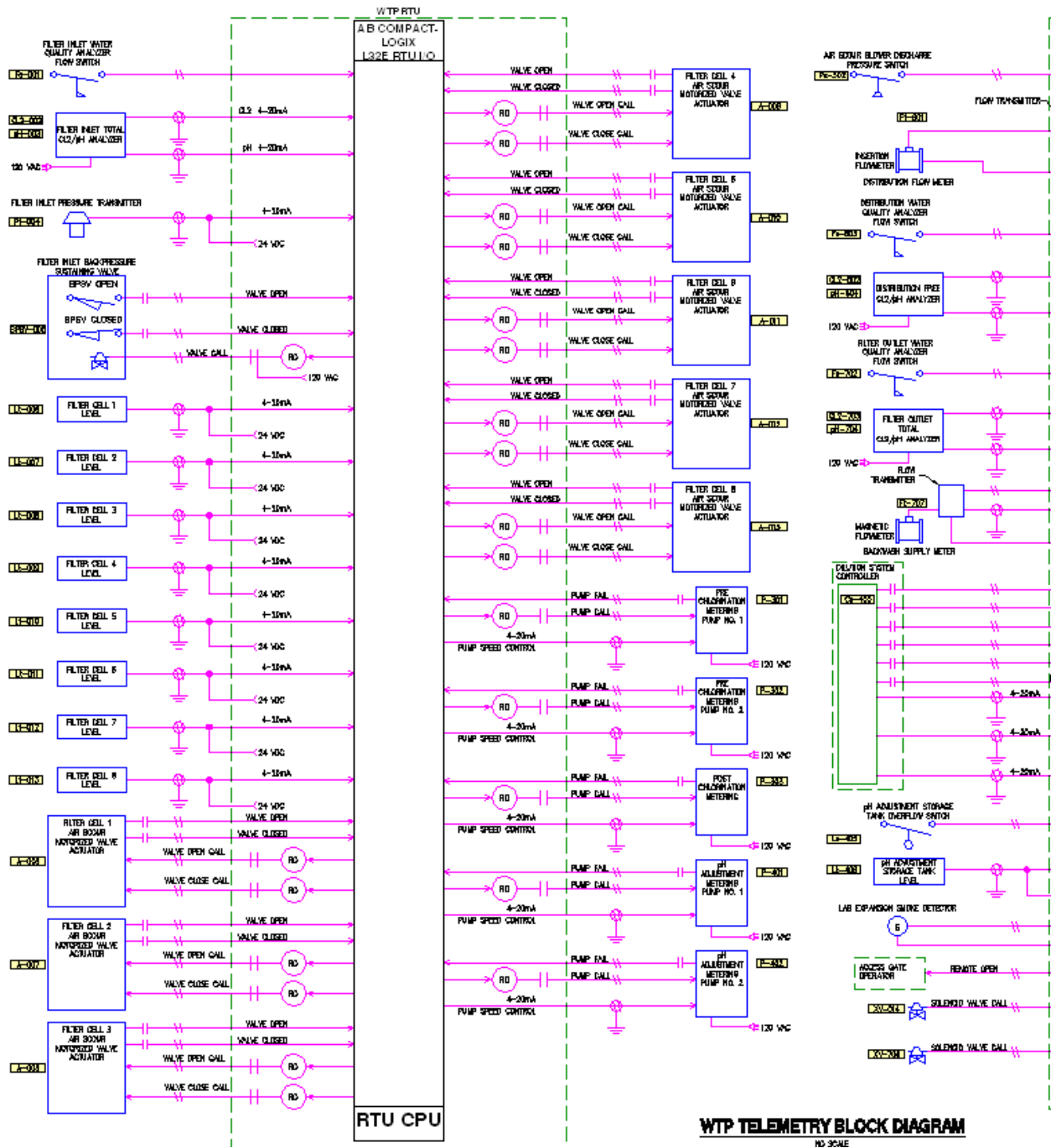
DRAWING IS NOT TO SCALE
IF BAR IS NOT 2" LONG

| | |
|--------------------------|------------|
| PLLOT: 1 | DWG NO. |
| ENGINEER: MWE | E01 |
| REVIEWED: CMR | |
| DATE: FEB 7, 2011 | SHEET NO. |
| CLIENT: FER | 51 |
| DWG NO.: 410-069 | 75 |
| FILENAME: GWTP-D-ELECC01 | |

Page 51 of 75 printed correctly



Page 75 of 75 with Error (note yellow boxes with blank text/numbers)



Page 75 of 75 printed correctly (note yellow boxes with text/numbers)

Revise the following note in the Air Scour Plan:

UNISTRUT, TYP. SUSPENDED FROM CEILING TO SUPPORT ~~LEVEL SENSORS AND~~
VALVE ACTUATOR CONDUITS, SEE DWG NO S08 FOR DETAILS.

Page 31 of 75 – Y03 – FILTRATION AND DISTRIBUTION SYSTEM P&ID

Removed Ultrasonic Level Transmitters (Lt-006-Lt-013) and their respective analog input signals. Added (1) Ultrasonic Level Transmitter (Lt-014) to the existing Reactor. A revised plan is attached.

Page 63 of 75 – E13 – NORTH WTP: ELECTRICAL PLAN

Removed Ultrasonic Level Transmitters (Lt-006-Lt-013) and removed raceways J9 and J10. Added (1) Ultrasonic Level Transmitter (Lt-014) to the existing Reactor and added raceway J27. A revised plan is attached.

Page 67 of 75 – E17 – INSTRUMENTATION CONDUIT AND CONDUCTOR SCHEDULE

Removed circuits J9A, J9B, J9C, J9D, J10A, J10B, J10C, and J10D. Added circuit J27. A revised plan is attached.

Page 68 of 75 – E18 – ELECTRICAL DETAILS SHEET NO. 1

Added the following detail to the detail sheet:

INDOOR REACTOR TANK ULTRASONIC LEVEL TRANSMITTER DETAIL

A revised plan is attached.

Page 69 of 75 – E19 – ELECTRICAL DETAILS SHEET NO. 2

The “FILTER ACTUATOR AND ULTRASONIC LEVEL TRANSMITTER DETAIL” is revised to “FILTER ACTUATOR DETAIL”. The Ultrasonic Level Transmitter installation requirements have been removed from this detail. A revised plan is attached.

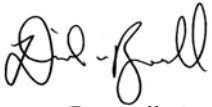
Page 75 of 75 – E25 – WTP TELEMETRY PLANS

Removed Ultrasonic Level Transmitters (Lt-006-Lt-013) and their respective analog input signals. Added (1) Ultrasonic Level Transmitter (Lt-014). A revised plan is attached.

Addendum No. 1 is hereby made a part of the Contract Documents and its terms and conditions are fully binding on the Contract Document holder. He/she shall acknowledge receipt of Addendum No. 1 by signing in the space provided below and attaching it to his/her proposal.

This Addendum No. 1 shall be acknowledged on the Bid Forms, page 12 by filling in No. **1** adjacent to the blank line for Addendum No., with **date of acknowledgement (on or before bid opening date)** and **signature of contractor** acknowledging Addendum No. 1.

City of Ferndale



Dan Burwell, P.E.
RH2 Engineering, Inc.
Project Manager

March 28, 2011