

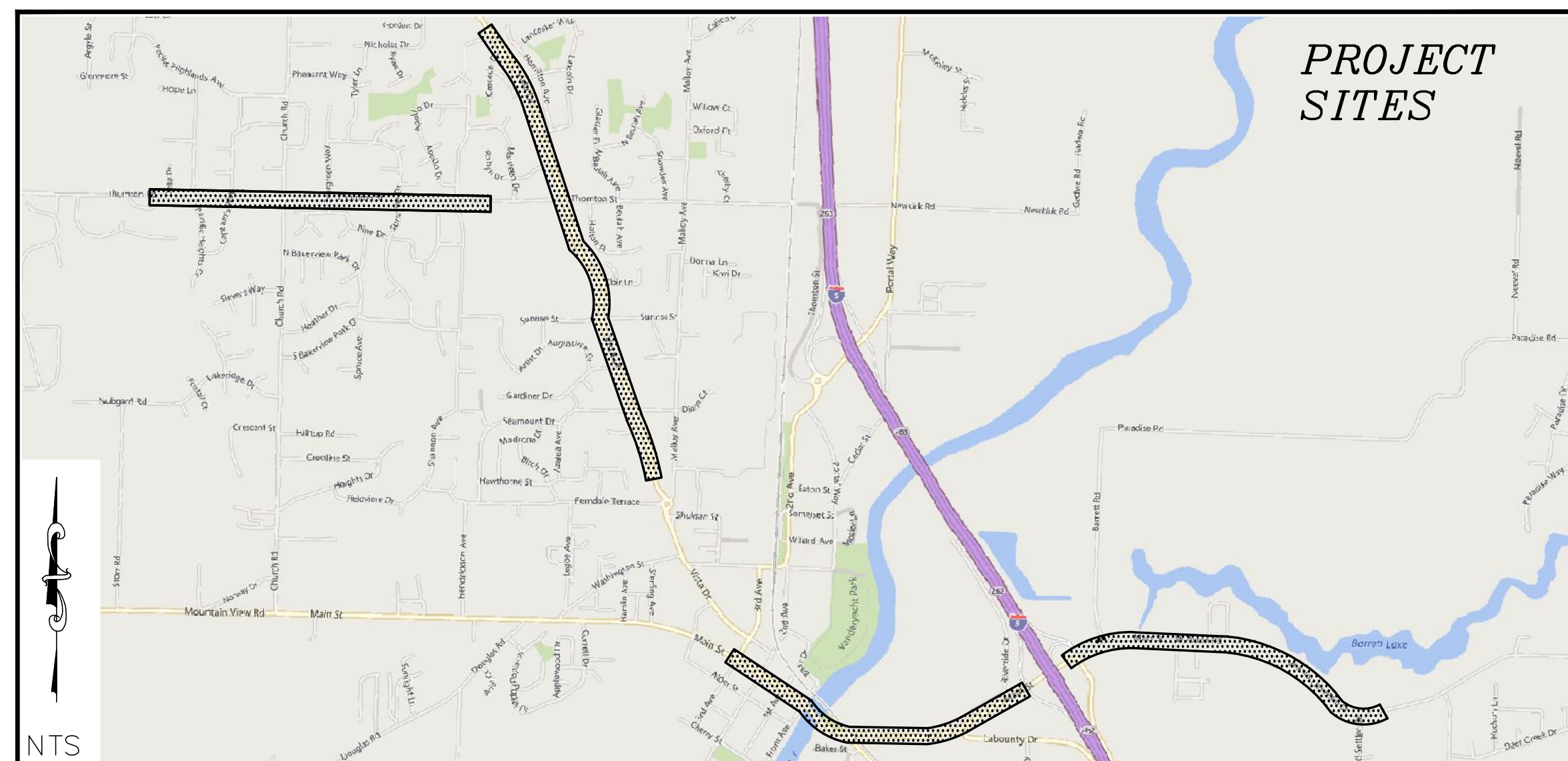
CRACK SEALING - CITYWIDE PROJECT

FERNDALE, WA

CITY OF FERNDALE - PROJECT NO. ST2015-05

VICINITY MAP

PROJECT LOCATED IN SECTIONS 19, 21, 28, 29, TOWNSHIP 39N, RANGE 2E, W.M.



PROJECT LOCATION

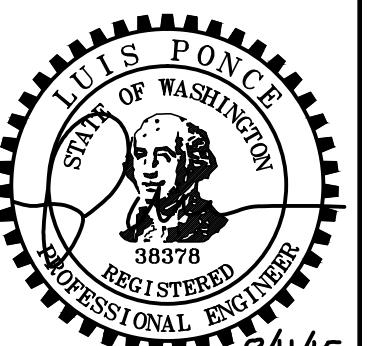


SHEET LIST TABLE

SHEET NUMBER	SHEET TITLE
1	COVER
2	BASE BID
3	BASE BID
4	BASE BID
5	ALT A1
6	ALT A1
7	ALT A2
8	ALT A3
9	ALT A4
10	ALT A5
11	DETAILS

LEGEND

	= PROJECT LIMITS
	= PAVEMENT REPAIR AREA
	= PLANE AREA TO 4" DEPTH
	= REMOVE AND REPLACE EXISTING SIDEWALK, CURB AND GUTTER
	= SAWCUT
	= CRACK SEAL
	= ADJUST SSMH



BID SET

DESIGNED BY
LP
DRAWN BY
RWG
CHECKED BY
LP

R&E Reichhardt & Ebe
ENGINEERING INC

P.O. Box 978 | 423 Front Street, Lynden, WA 98264 (360) 354-3687
813 Metcalf Street, Sedro-Woolley, WA 98284 (360) 855-1713

NO.	DATE	DESCRIPTION	BY

CITY OF FERNDALE
2095 MAIN STREET
FERNDALE, WA 98248

CRACK SEALING - CITYWIDE
PROJECT
COVER

DWG 15019 PLANS

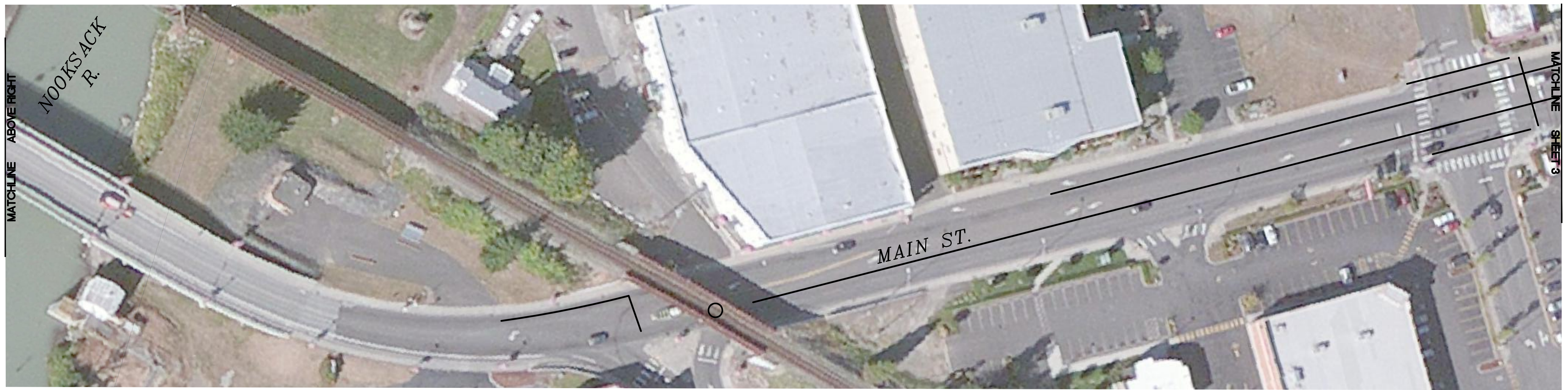
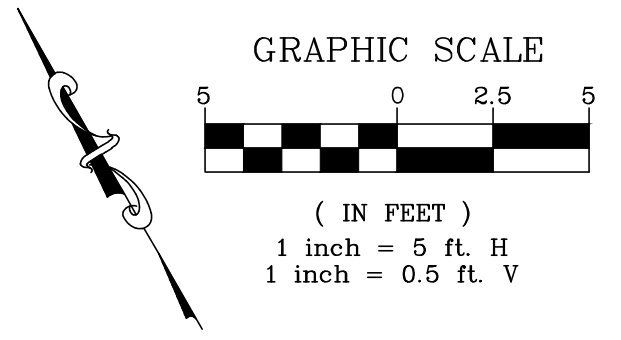
DATE
8/11/2015

JOB#
15019

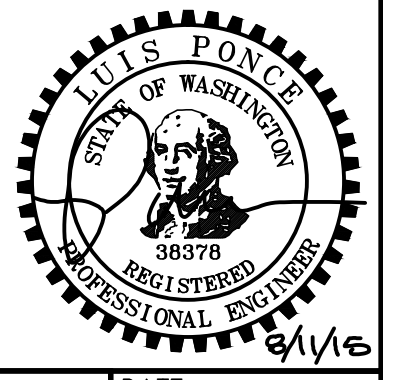
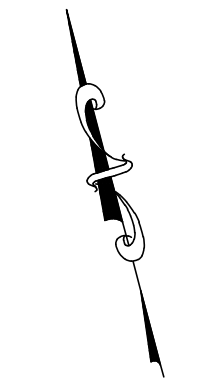
SCALE
H: N/A

V: N/A

SHEET
1
of 11



NOTE: SSMH BELOW TRACKS



BID SET

DESIGNED BY LP
DRAWN BY RWG
CHECKED BY LP

R&E Reichhardt & Ebe ENGINEERING INC
P.O. Box 978 | 423 Front Street, Lynden, WA 98264 (360) 354-3687
813 Metcalf Street, Sedro-Woolley, WA 98284 (360) 855-1713

NO.	DATE	DESCRIPTION	BY

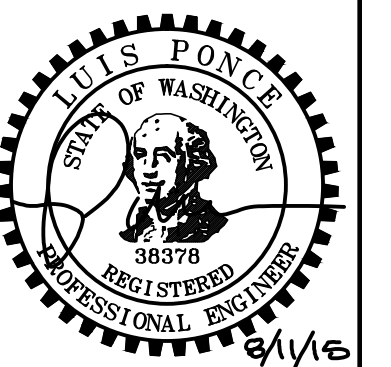
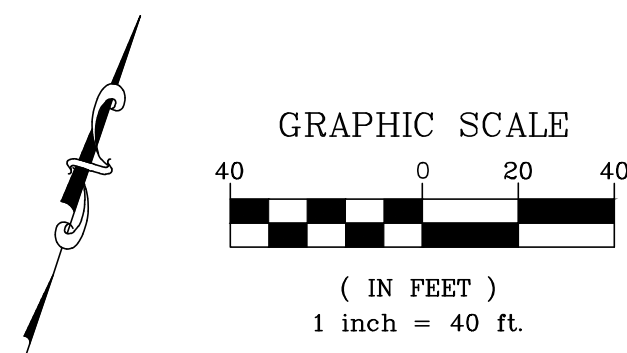
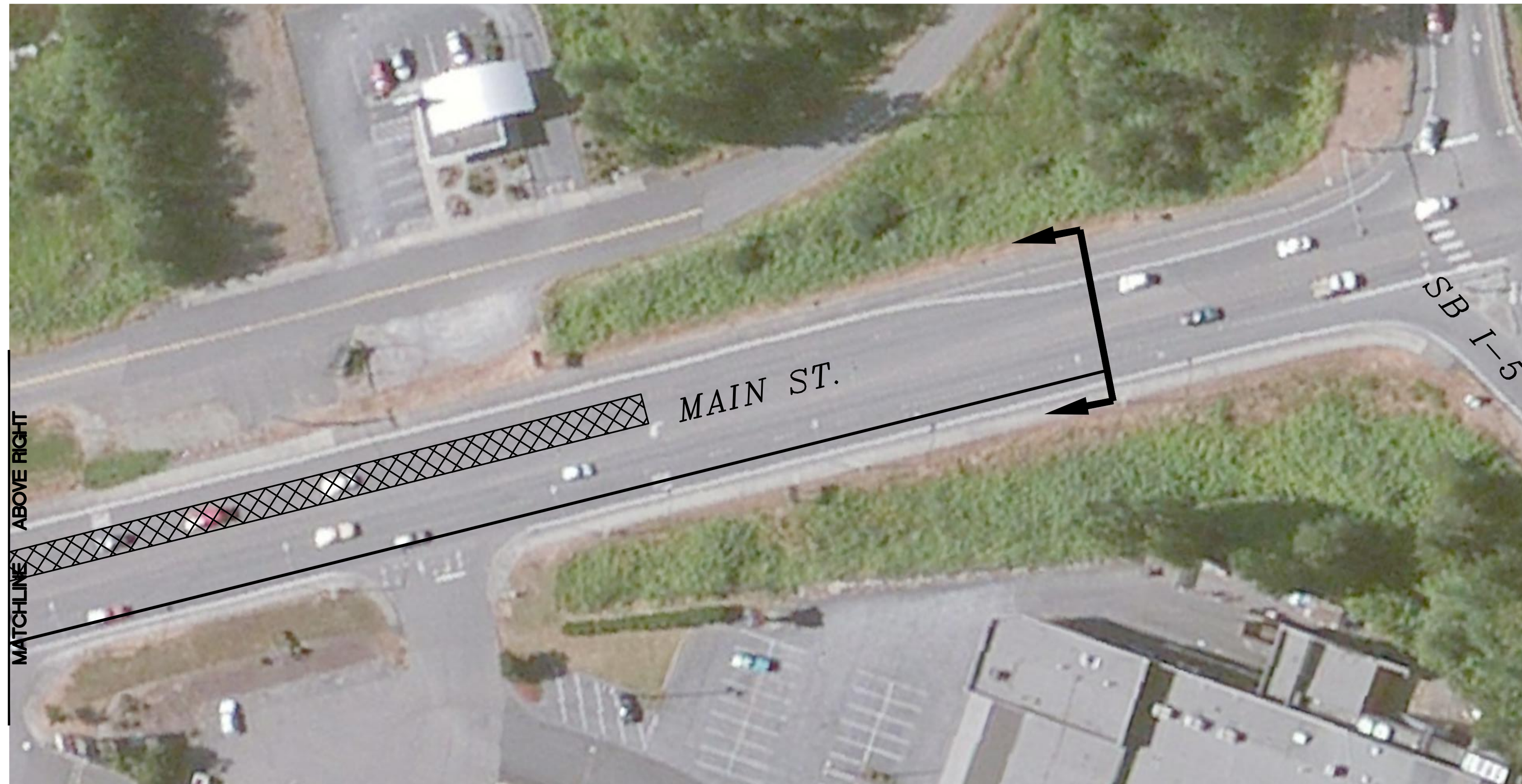
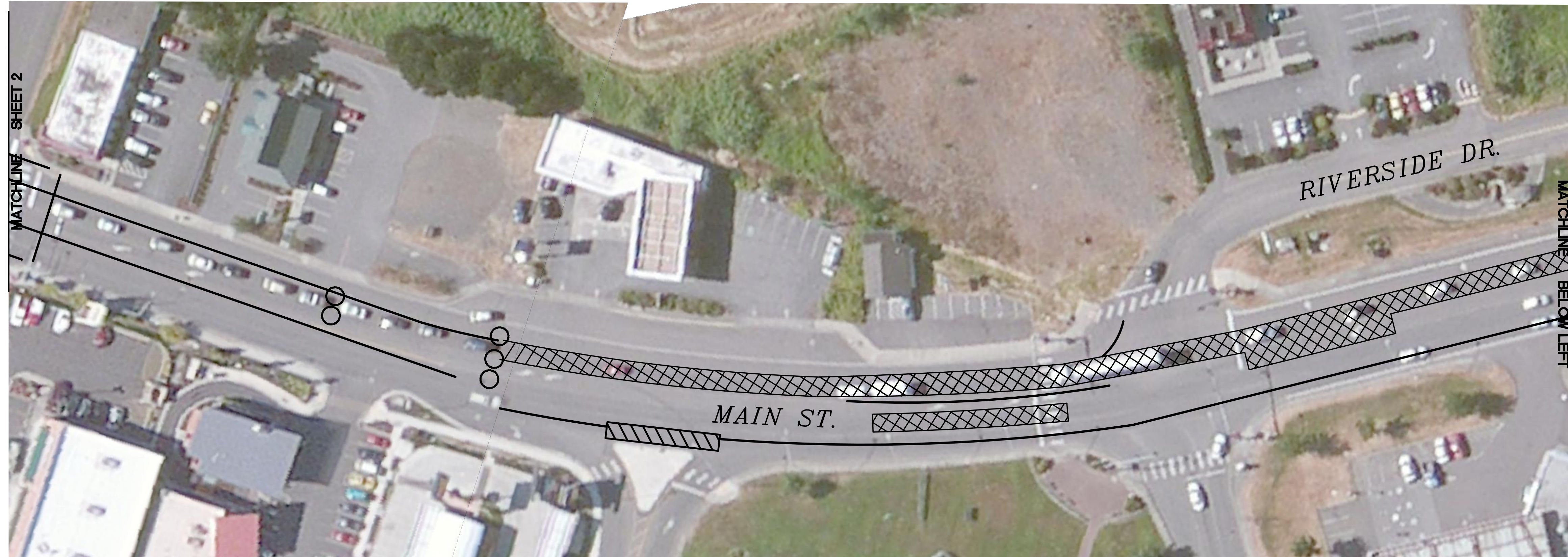
CITY OF FERDALE
2095 MAIN STREET
FERDALE, WA 98248

CRACK SEALING - CITYWIDE
PROJECT
BASE BID

DWG 15019 PLANS
JOB# 15019

SCALE
H: 1"=40' V: N/A

DATE 8/11/2015
SHEET 2 of 11



BID SET

DESIGNED BY
LP
DRAWN BY
RWG
CHECKED BY
LP

R&E Reichhardt & Ebe
ENGINEERING INC
P.O. Box 978 | 423 Front Street, Lynden, WA 98264 (360) 354-3687
813 Metcalf Street, Sedro-Woolley, WA 98284 (360) 855-1713

NO.	DATE	DESCRIPTION	BY

CITY OF FERDALE
2095 MAIN STREET
FERDALE, WA 98248

CRACK SEALING - CITYWIDE
PROJECT
BASE BID

DWG 15019 PLANS

JOB#
15019

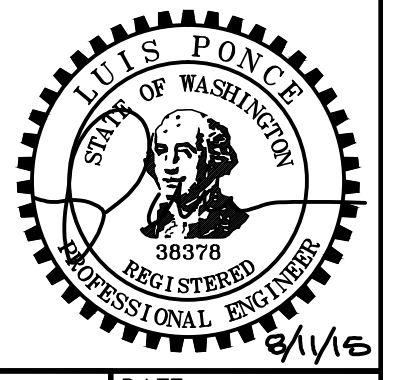
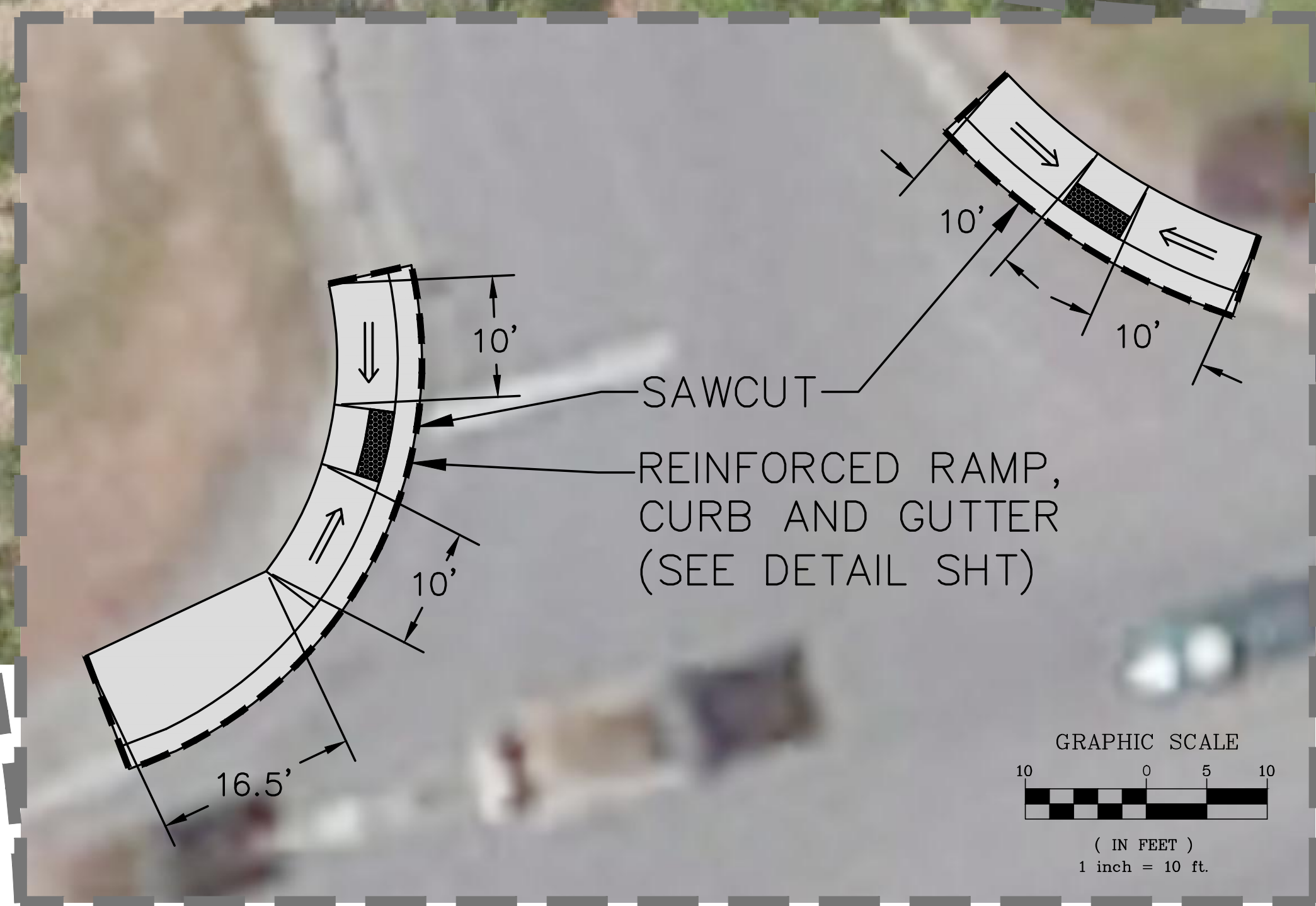
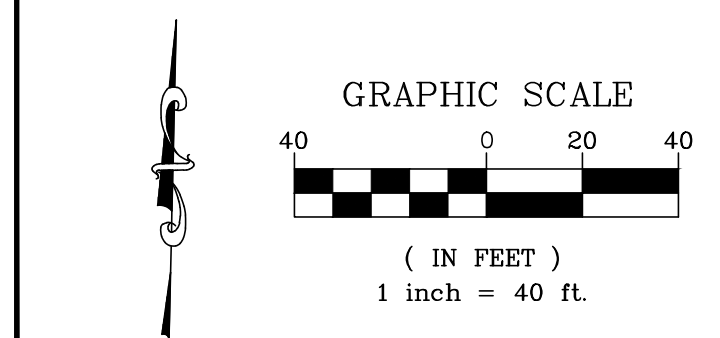
SCALE
H: 1"=40' V: N/A

DATE
8/11/2015

SHEET
3
of 11



MATCHLINE SHEET 5



BID SET

DESIGNED BY LP
DRAWN BY RWG
CHECKED BY LP

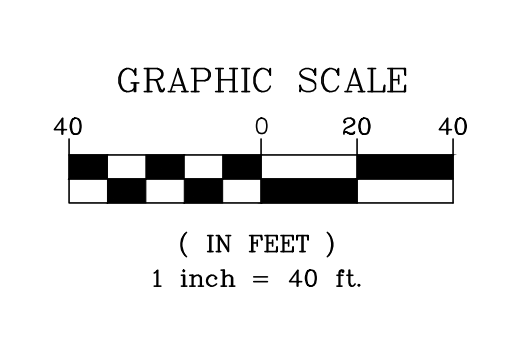
R&E Reichhardt & Ebe ENGINEERING INC
P.O. Box 978 | 423 Front Street, Lynden, WA 98264 (360) 354-3687
813 Metcalf Street, Sedro-Woolley, WA 98284 (360) 855-1713

NO.	DATE	DESCRIPTION	BY

CITY OF FERDALE
2095 MAIN STREET
FERDALE, WA 98248

CRACK SEALING - CITYWIDE
PROJECT
BASE BID

DWG 15019 PLANS		DATE 8/11/2015
JOB# 15019	SCALE H: 1"=40' V: N/A	SHEET 4 of 11



MATCHLINE SHEET 6

BID SET

DESIGNED BY LP
 DRAWN BY RWG
 CHECKED BY LP

R&E Reichhardt & Ebe ENGINEERING INC
 P.O. Box 978 | 423 Front Street, Lynden, WA 98264 (360) 354-3687
 813 Metcalf Street, Sedro-Woolley, WA 98284 (360) 855-1713

NO.	DATE	DESCRIPTION	BY

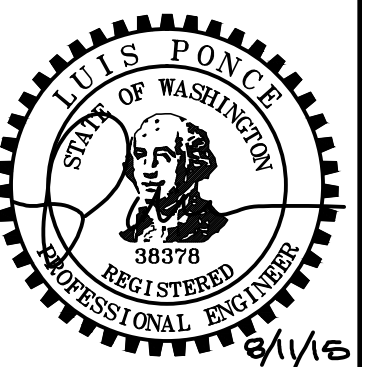
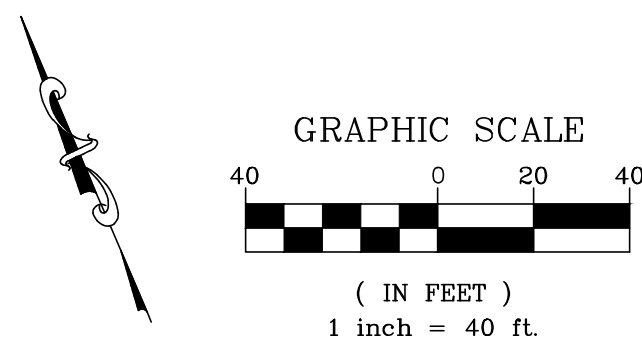
CITY OF FERNDALE
 2095 MAIN STREET
 FERNDALE, WA 98248

CRACK SEALING - CITYWIDE PROJECT
 ALT A1

DWG 15019 PLANS
 JOB# 15019

SCALE
 H: 1"=40' V: N/A

DATE 8/11/2015
 SHEET 5 of 11



BID SET

DESIGNED BY
LP
DRAWN BY
RWG
CHECKED BY
LP

R&E Reichhardt & Ebe
ENGINEERING INC
P.O. Box 978 | 423 Front Street, Lynden, WA 98264 (360) 354-3687
813 Metcalf Street, Sedro-Woolley, WA 98284 (360) 855-1713

NO.	DATE	DESCRIPTION	BY

CITY OF FERDALE
2095 MAIN STREET
FERDALE, WA 98248

CRACK SEALING - CITYWIDE
PROJECT
ALT A1

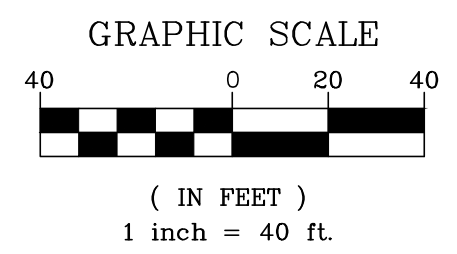
DWG 15019 PLANS

JOB#
15019

SCALE
H: 1"=40' V: N/A

DATE
8/11/2015

SHEET
6
of 11



BID SET

DESIGNED BY
LP
DRAWN BY
RWG
CHECKED BY
LP

**R&E Reichhardt & Ebe
ENGINEERING INC**
P.O. Box 978 | 423 Front Street, Lynden, WA 98264 (360) 354-3687
813 Metcalf Street, Sedro-Woolley, WA 98284 (360) 855-1713

NO.	DATE	DESCRIPTION	BY

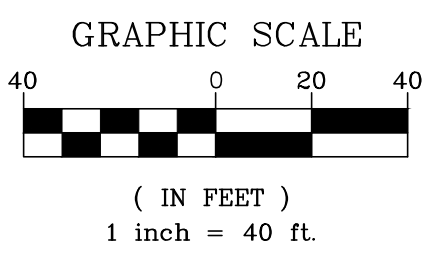
CITY OF FERDALE
2095 MAIN STREET
FERDALE, WA 98248

CRACK SEALING - CITYWIDE
PROJECT
ALT A2

DWG 15019 PLANS
JOB# 15019

SCALE
H: 1"=40' V: N/A

DATE 8/11/2015
SHEET 7 of 11



BID SET

DESIGNED BY LP
DRAWN BY RWG
CHECKED BY LP

R&E Reichhardt & Ebe ENGINEERING INC
P.O. Box 978 | 423 Front Street, Lynden, WA 98264 (360) 354-3687
813 Metcalf Street, Sedro-Woolley, WA 98284 (360) 855-1713

NO.	DATE	DESCRIPTION	BY

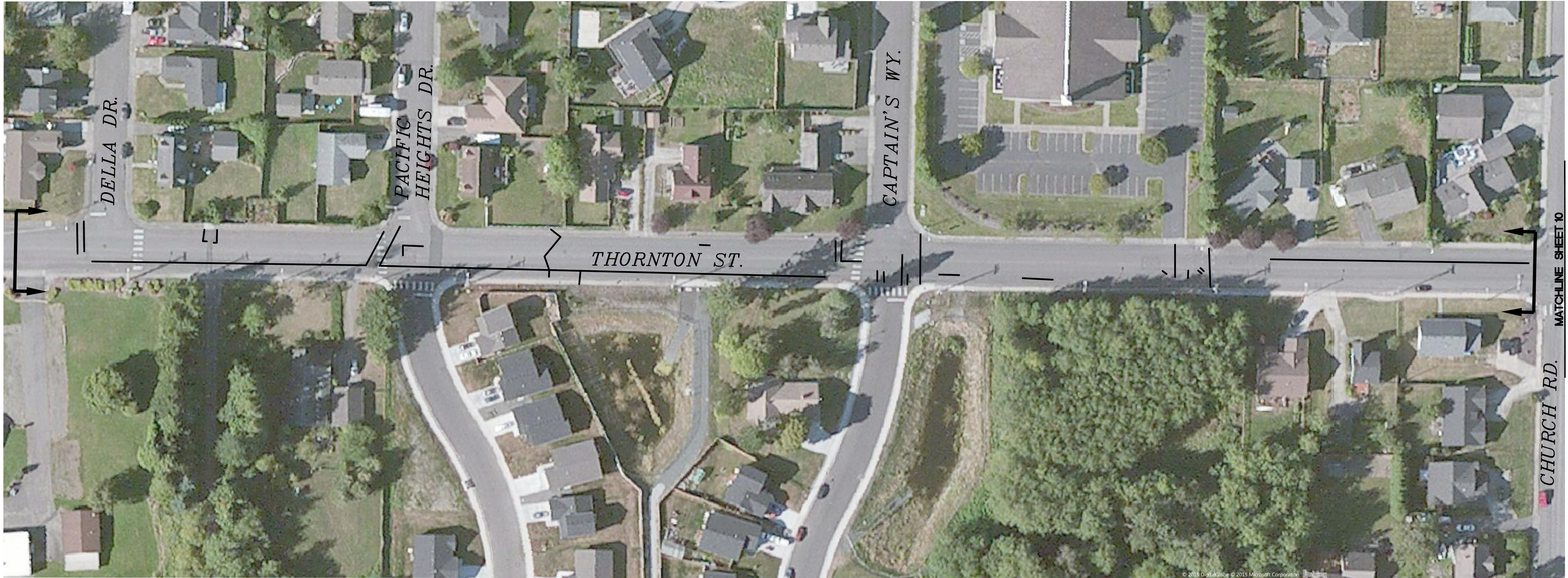
CITY OF FERDALE
2095 MAIN STREET
FERDALE, WA 98248

CRACK SEALING - CITYWIDE
PROJECT
ALT A3

DWG 15019 PLANS
JOB# 15019

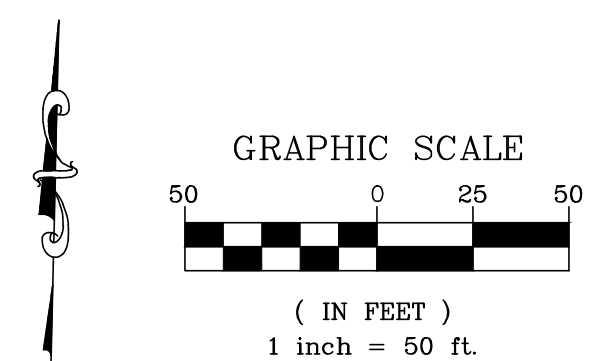
SCALE
H: 1"=40' V: N/A

DATE 8/11/2015
SHEET 8 of 11



MATCHLINE SHEET 10

CHURCH RD.



BID SET

DESIGNED BY
LP
DRAWN BY
RWG
CHECKED BY
LP

R&E Reichhardt & Ebe ENGINEERING INC
P.O. Box 978 | 423 Front Street, Lynden, WA 98264 (360) 354-3687
813 Metcalf Street, Sedro-Woolley, WA 98284 (360) 855-1713

NO.	DATE	DESCRIPTION	BY

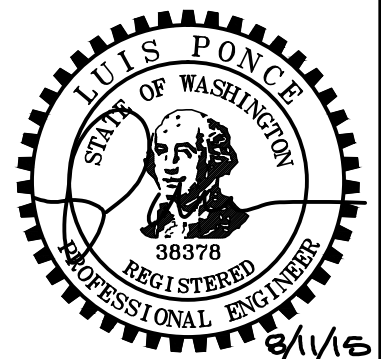
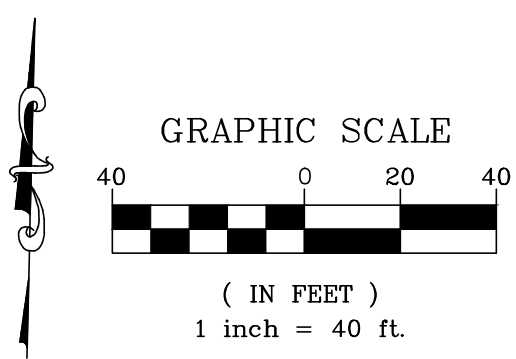
CITY OF FERNDALE
2095 MAIN STREET
FERNDALE, WA 98248

CRACK SEALING - CITYWIDE PROJECT
ALT A4

DWG 15019 PLANS
JOB# 15019

SCALE
H: 1"=50' V: N/A

DATE 8/11/2015
SHEET 9 of 11



BID SET

DESIGNED BY
LP
DRAWN BY
RWG
CHECKED BY
LP

R&E Reichhardt & Ebe ENGINEERING INC
P.O. Box 978 | 423 Front Street, Lynden, WA 98264 (360) 354-3687
813 Metcalf Street, Sedro-Woolley, WA 98284 (360) 855-1713

NO.	DATE	DESCRIPTION	BY

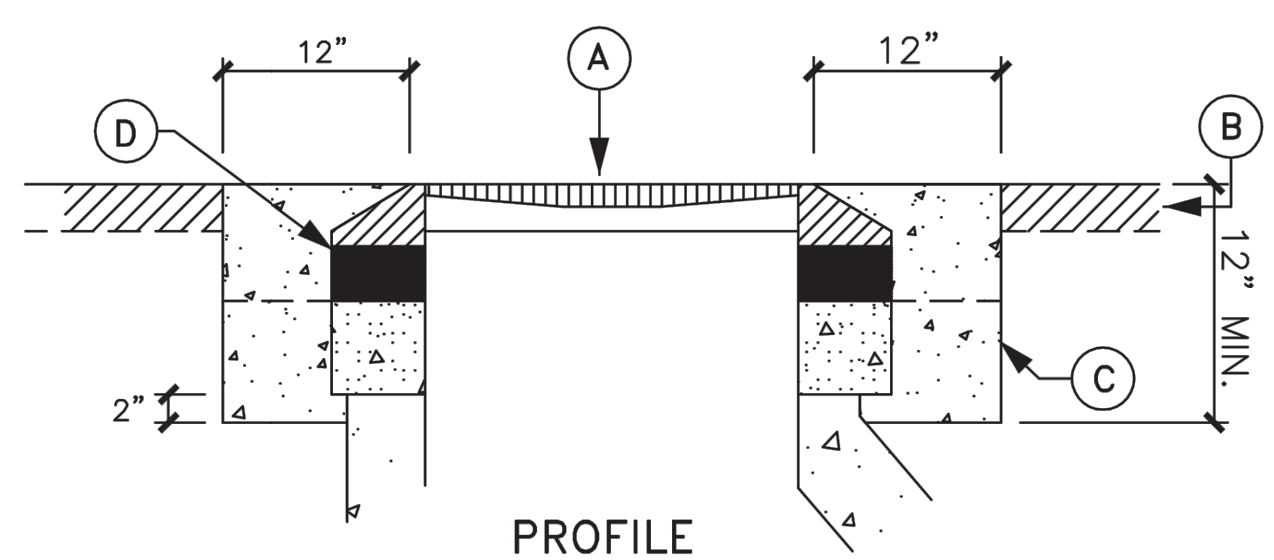
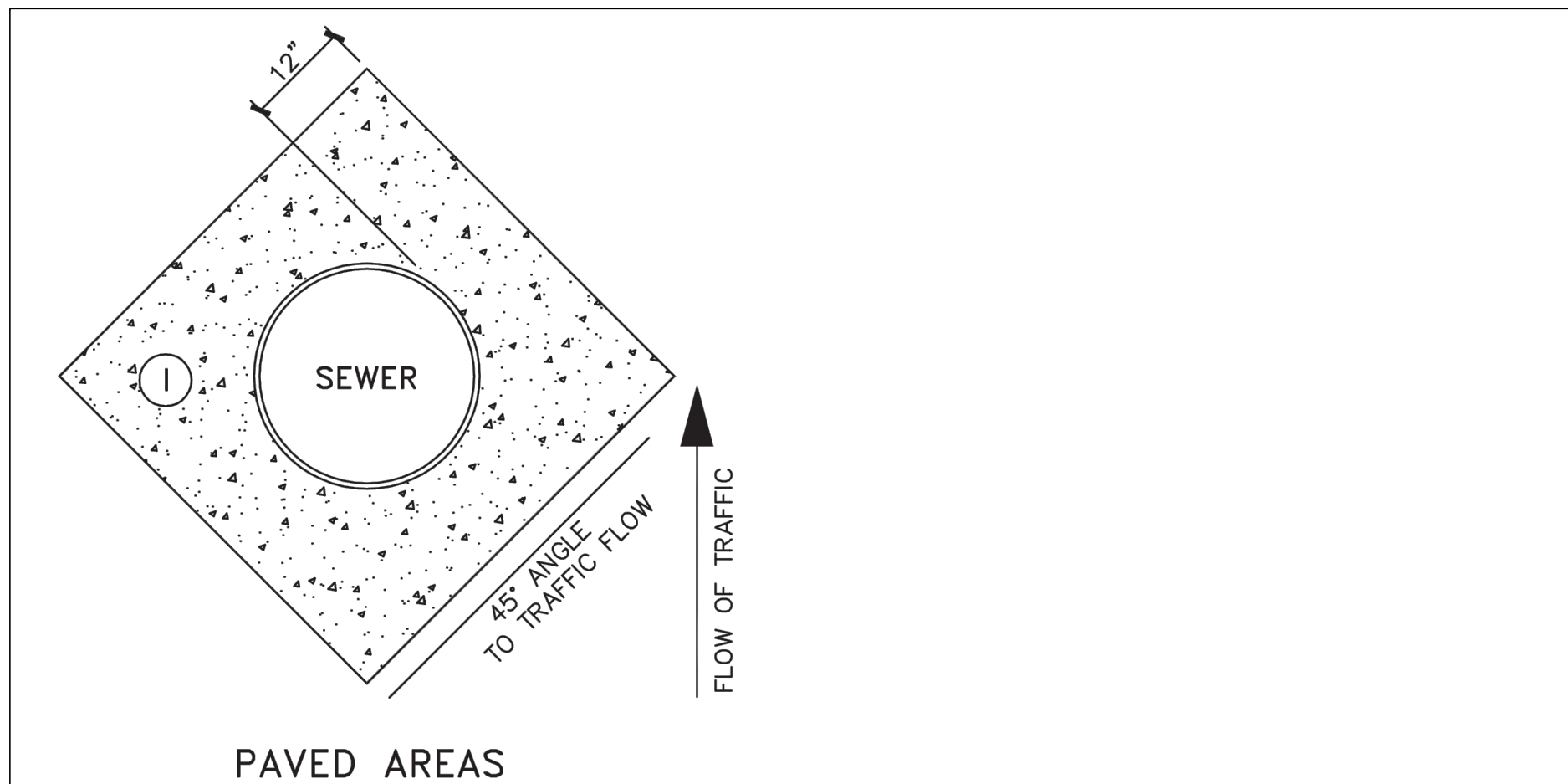
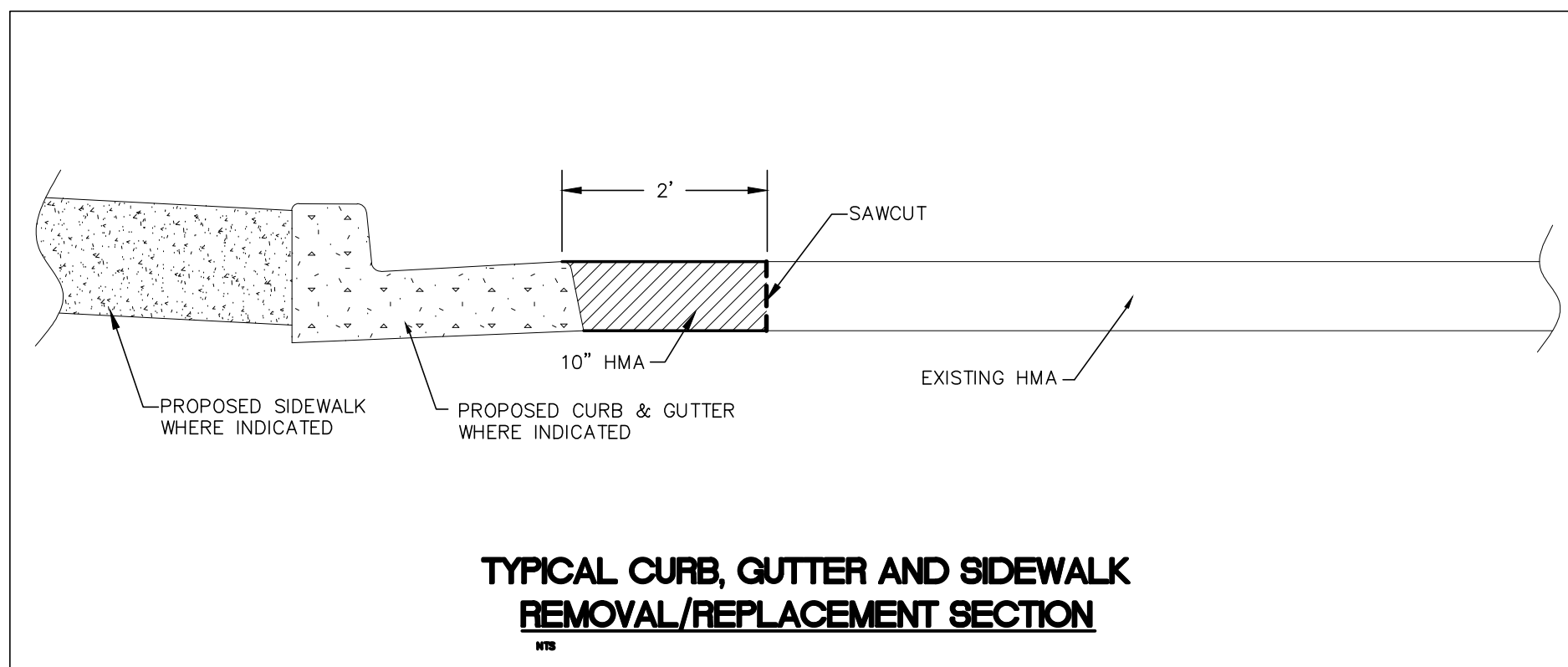
CITY OF FERDALE
2095 MAIN STREET
FERDALE, WA 98248

CRACK SEALING - CITYWIDE PROJECT
ALT A5

DWG 15019 PLANS
JOB# 15019

SCALE
H: 1"=40' V: N/A

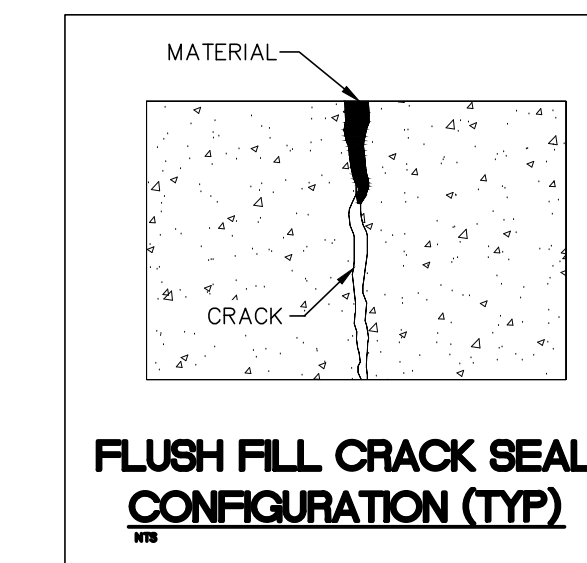
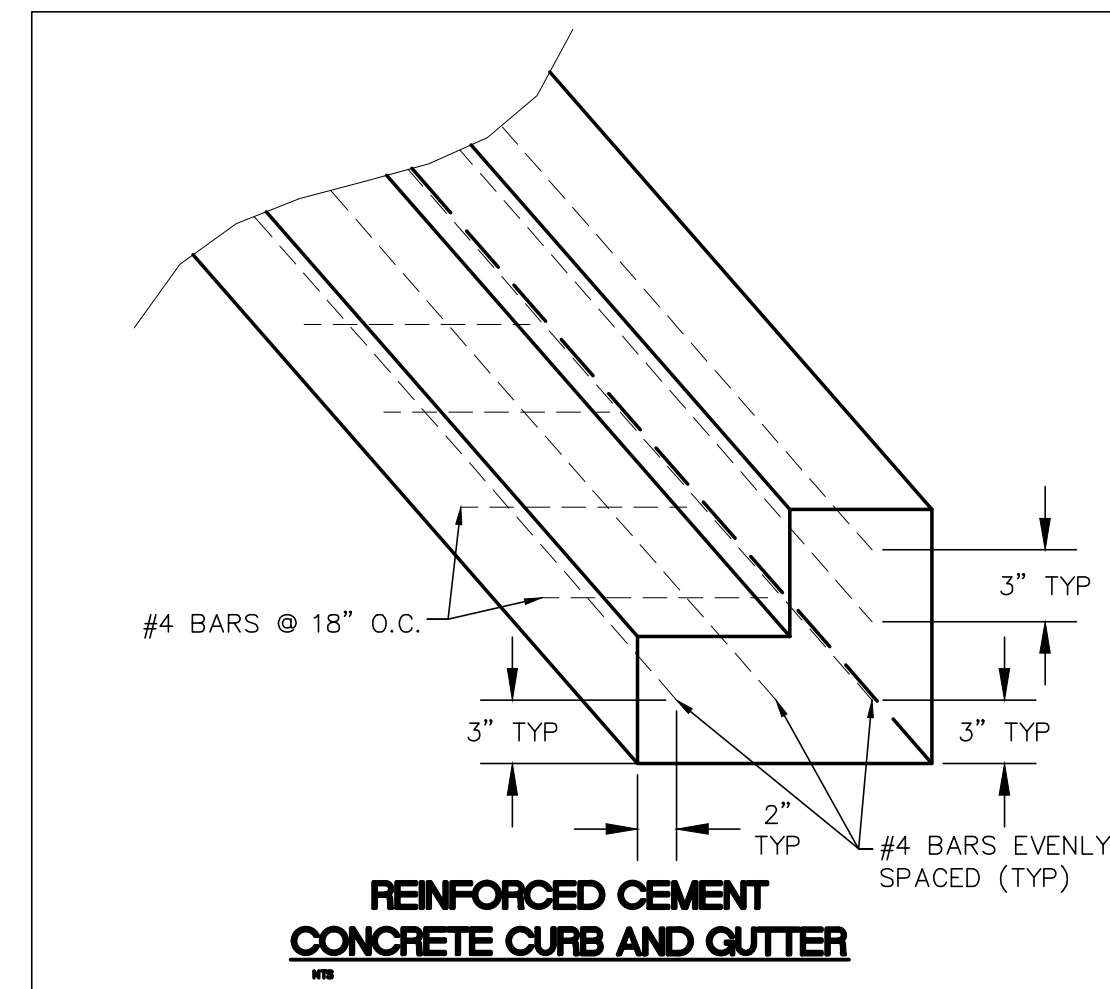
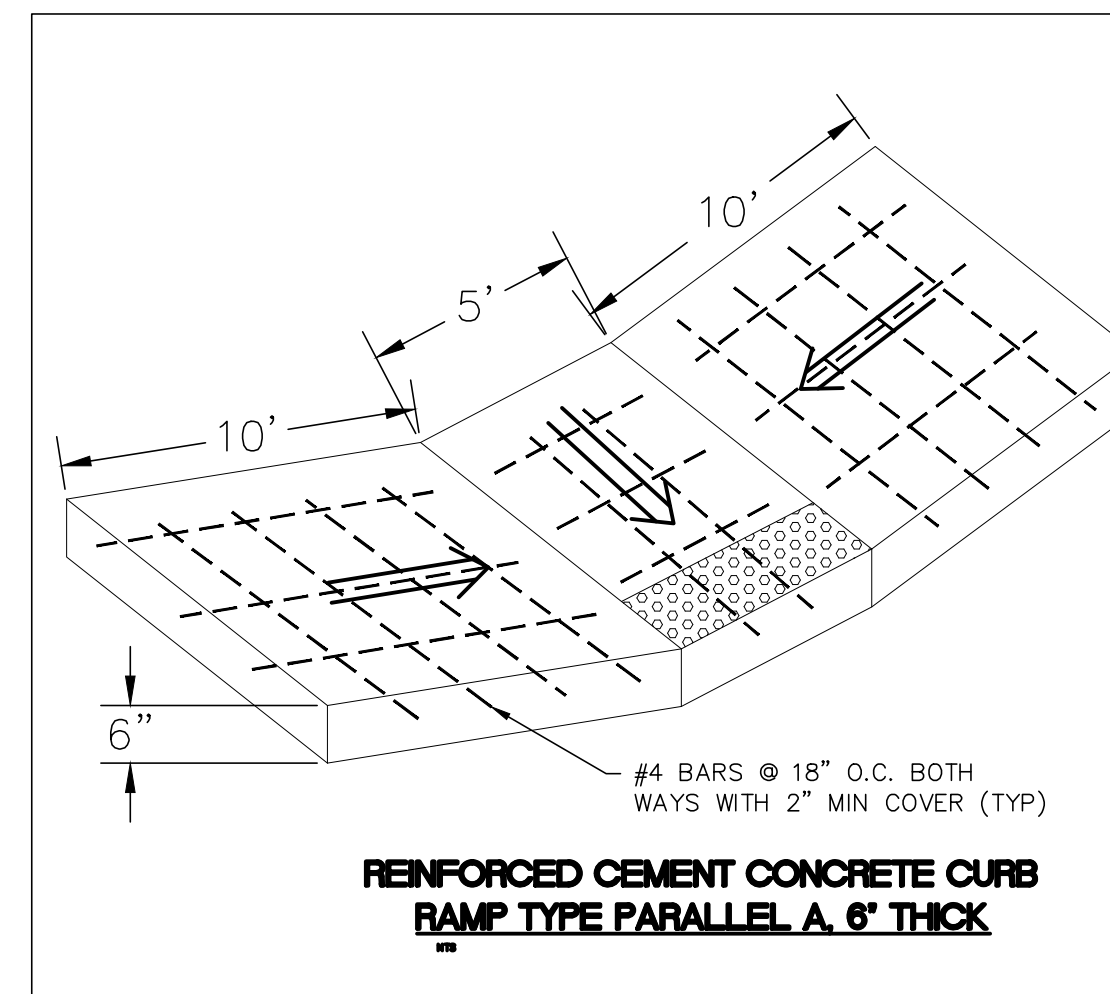
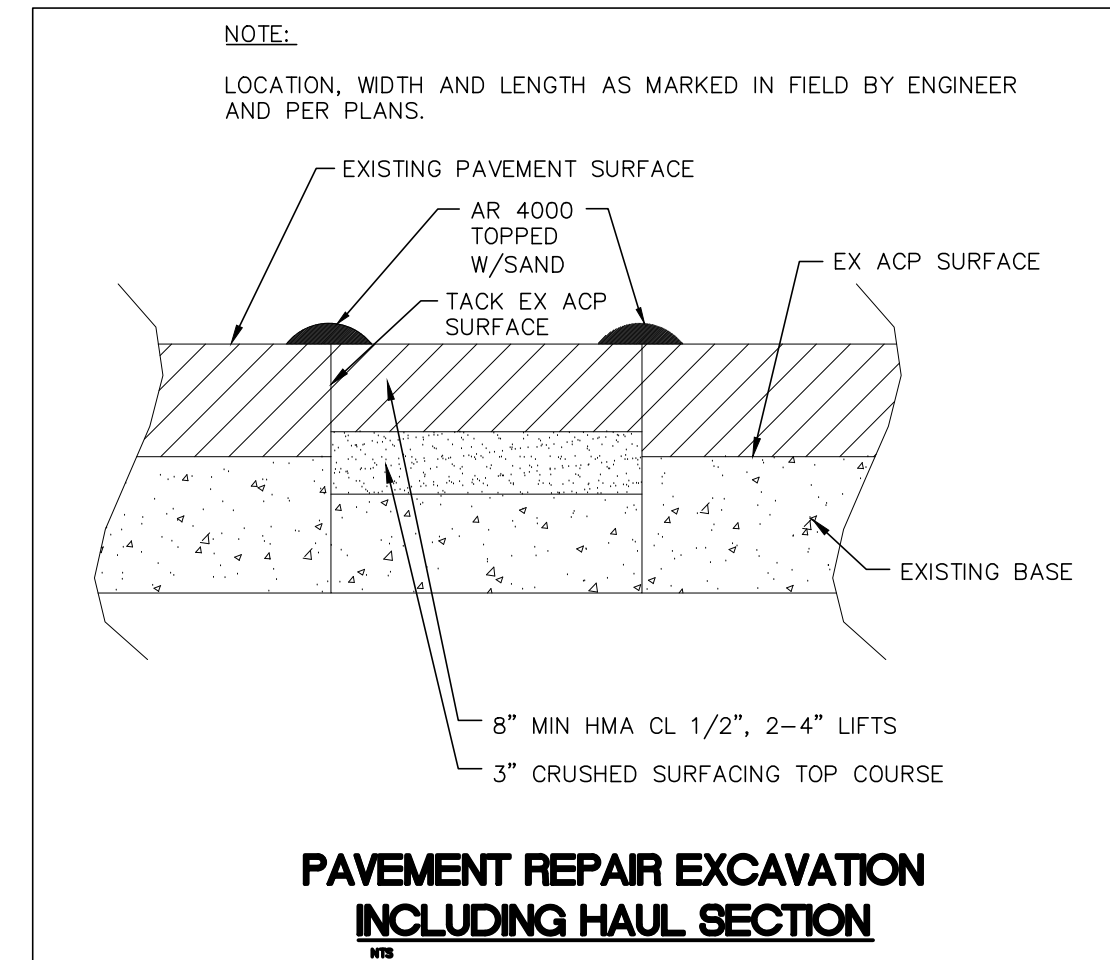
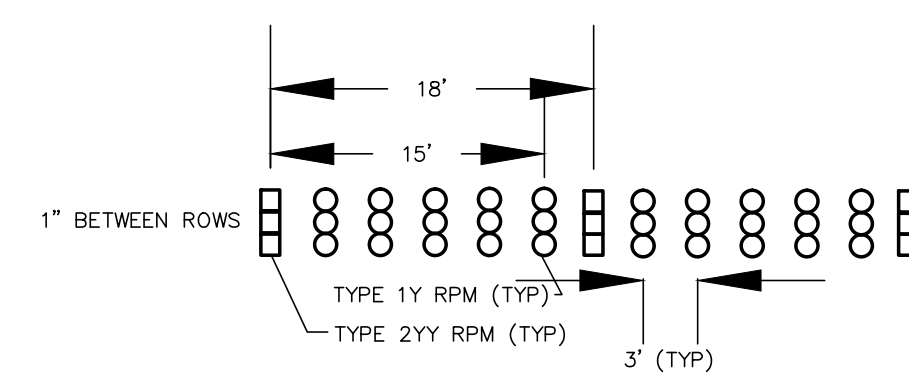
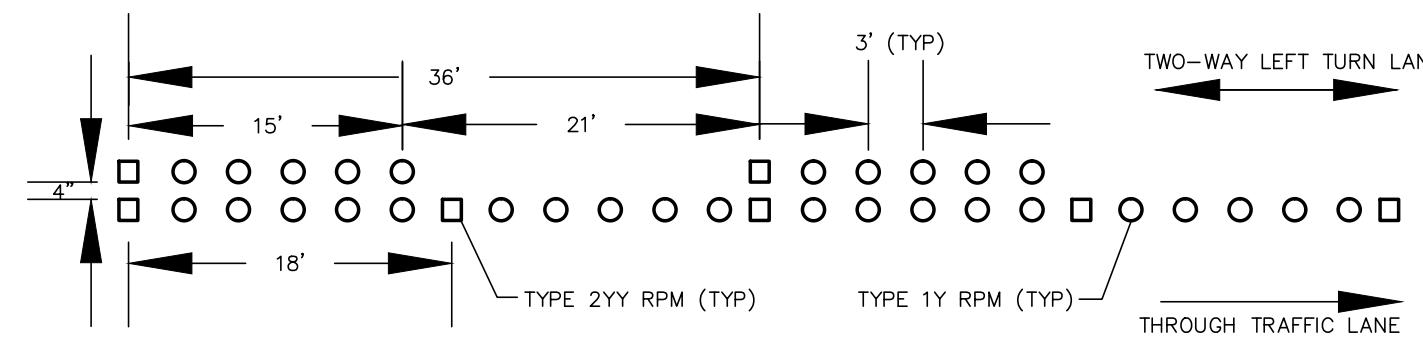
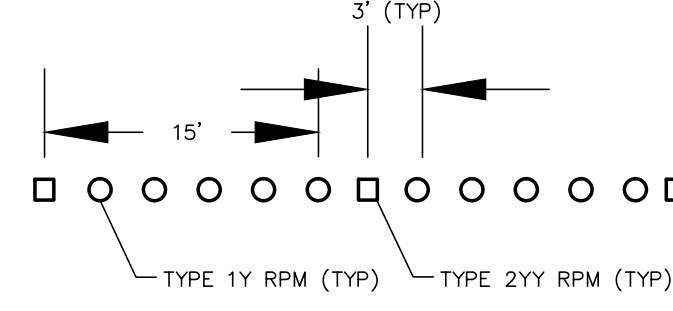
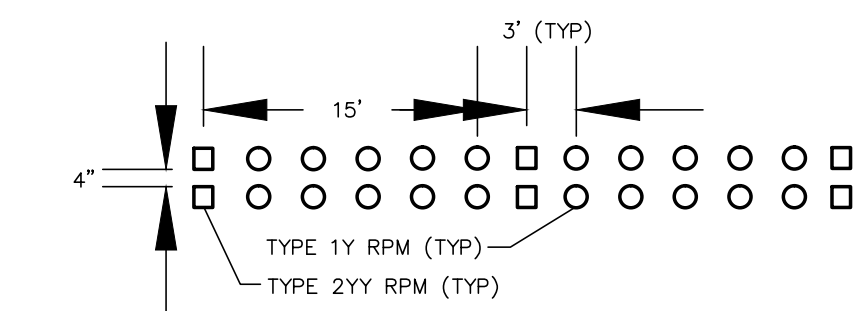
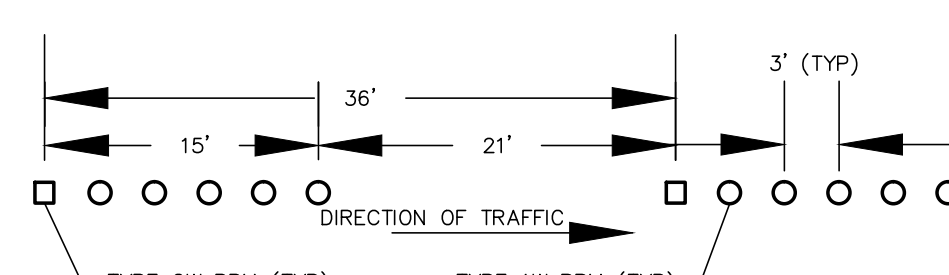
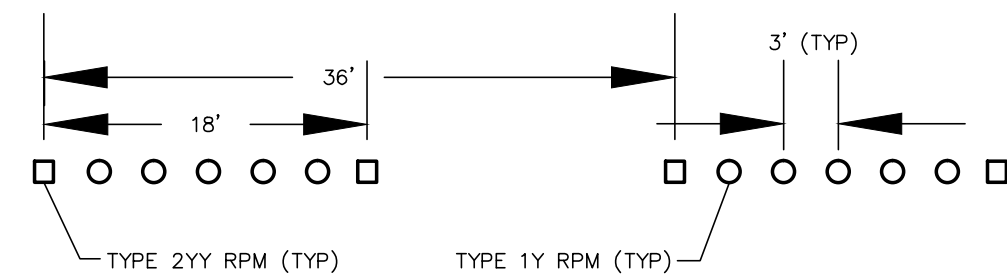
DATE 8/11/2015
SHEET 10 of 11



- LEGEND:**
- A. MANHOLE RING AND COVER
 - B. EXISTING SURFACE
 - C. 3000 P.S.I. CEMENT CONCRETE PERIMETER SEAL
 - D. INSTALL PRECAST ADJUSTMENT RINGS OR CONCRETE BLOCKS AS NECESSARY TO MATCH FINAL GRADE.

- NOTES:**
1. THE CONCRETE SHALL CONFORMING TO THE CURRENT WSDOT 9-03.1(4) AND BE 5.5 SACK MIX. (MINIMUM 3000-PSI 28-DAY STRENGTH).
 2. WHERE DEPTH OF NECK EXCEEDS 24 INCHES, ADJUST MANHOLE TO GRADE BY INSERTING A NEW MANHOLE BARREL SECTION BETWEEN THE CONE AND EXISTING BARREL.
 3. ADJUSTMENT RINGS/BLOCK SHALL BE SET IN 3/4" NON-SHRINK GROUT, PLASTER SMOOTH INSIDE AND OUT.
 4. PRECAST ADJUSTMENT RINGS SHALL BE CAST WITH GROOVE TO ALLOW FIELD INSTALLATION OF SAFETY STEP.
 5. MORTAR SHALL BE PLACED BETWEEN EACH LEVEL OF ADJUSTMENT CONCRETE BLOCKS, ADJUSTMENT RINGS, TOP OF CONE SECTION AND BOTTOM OF IRON RING.
 6. THE CONCRETE PERIMETER SEAL SHALL EXTEND TO 12 INCH MINIMUM OR 2 INCHES BELOW THE BOTTOM OF THE ADJUSTMENT RINGS OR BLOCKS.

SANITARY SEWER MANHOLE - MAIN ST



APPROVED

Public Works Director

Date

CITY OF FERNDALÉ
STRIPING DETAILS

NOT TO SCALE

DRAWING
RPM

BID SET

DESIGNED BY LP
DRAWN BY RWG
CHECKED BY LP

**R&E Reichhardt & Ebe
ENGINEERING INC**
P.O. Box 978 | 423 Front Street, Lynden, WA 98264 (360) 354-3687
813 Metcalf Street, Sedro-Woolley, WA 98284 (360) 855-1713

NO.	DATE	DESCRIPTION	BY

CITY OF FERNDALÉ
2095 MAIN STREET
FERNDALÉ, WA 98248

CRACK SEALING - CITYWIDE
PROJECT
DETAILS

DWG 15019 PLANS

JOB# 15019

SCALE H: N/A

v: N/A

DATE 8/11/2015

SHEET 11 of 11