

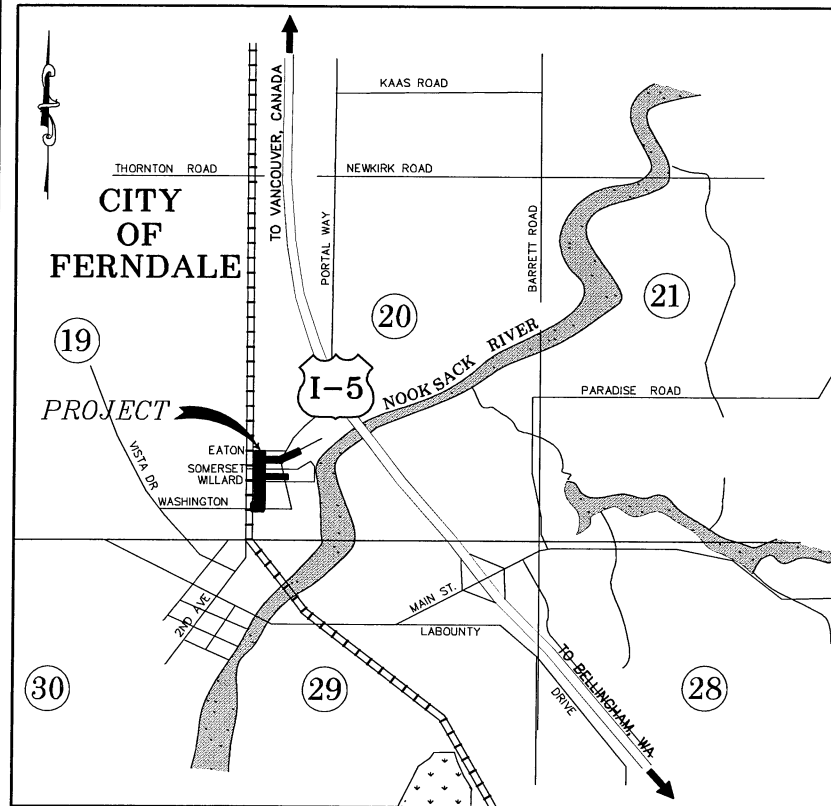
EATON, SOMERSET, WILLARD AND WASHINGTON SEWER PROJECT No. SS2011-01

CITY OF FERNDALE

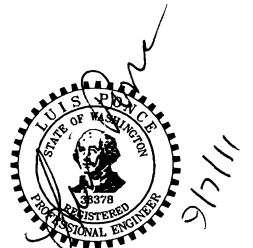
SHEET INDEX

- 1.) COVER SHEET
- 2.) KEY MAP
- 3.) EXISTING CONDITIONS, TESC AND DEMO PLAN
- 4.) EXISTING CONDITIONS, TESC AND DEMO PLAN
- 5.) EXISTING CONDITIONS, TESC AND DEMO PLAN
- 6.) EXISTING CONDITIONS, TESC AND DEMO PLAN
- 7.) PROPOSED SANITARY SEWER PLAN & PROFILE BASE BID
- 8.) PROPOSED SANITARY SEWER PLAN & PROFILE BASE BID
- 9.) PROPOSED SANITARY SEWER PLAN & PROFILE BASE BID
- 10.) PROPOSED SANITARY SEWER PLAN & PROFILE BASE BID
- 11.) PROPOSED SANITARY SEWER PLAN & PROFILE ALTERNATE A1
- 12.) PROPOSED SANITARY SEWER PLAN & PROFILE ALTERNATE A1
- 13.) PROPOSED SANITARY SEWER PLAN & PROFILE ALTERNATE A1
- 14.) DETAIL SHEET
- 15.) DETAIL SHEET

VICINITY MAP
NTS



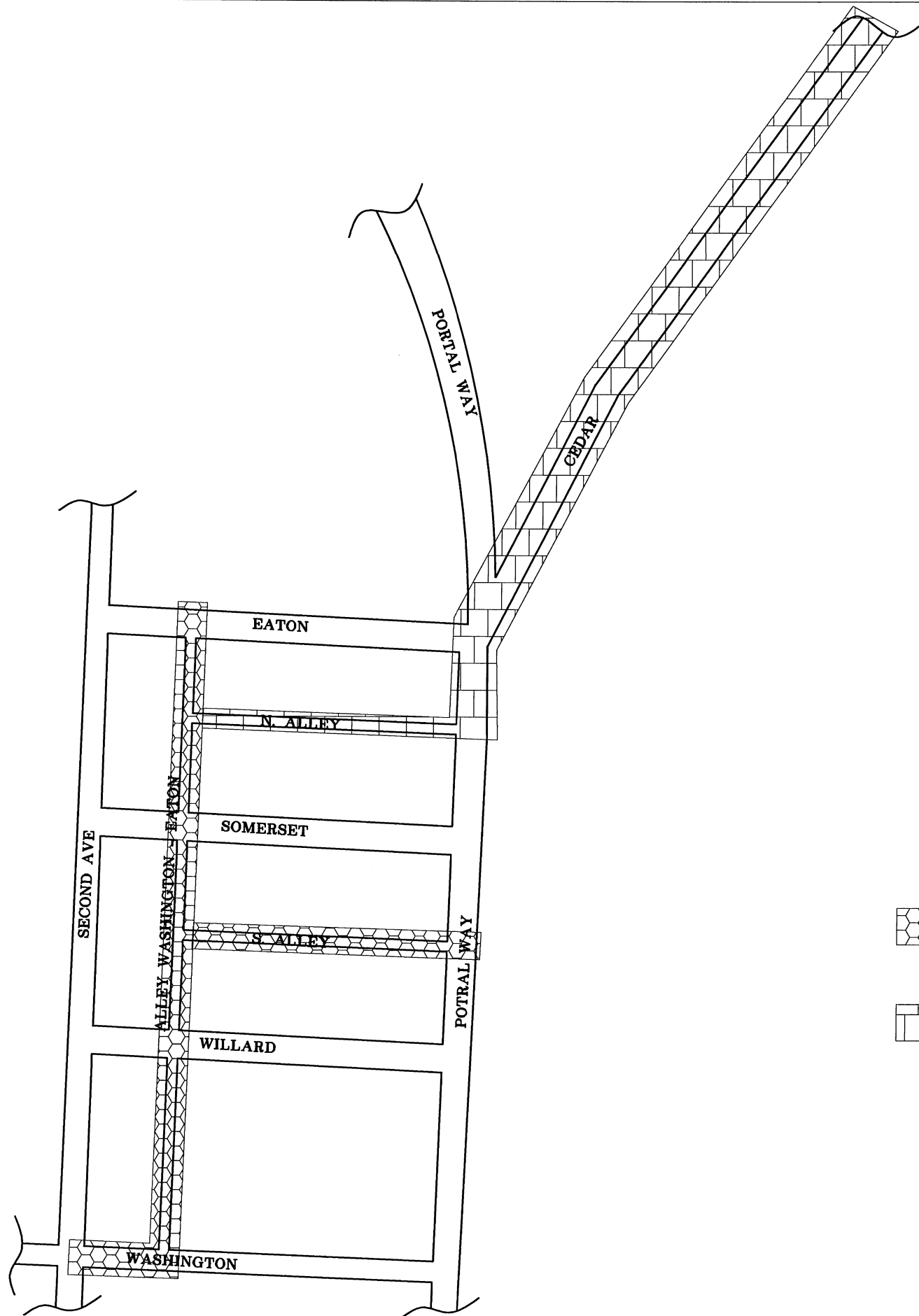
EXISTING	LEGEND	PROPOSED	
---BB---BB---	= EX TOE OF BANK	-----	= PROPOSED AUTOTURN
---OH---OH---	= EX OVERHEAD POWER	-----	= PROPOSED DITCH CL
-----	= EX CONCRETE	-----	= PROPOSED BUILDING
-----95-----	= EX MAJOR CONTOUR	---BB---BB---	= PROPOSED TOE OF BANK
-----95-----	= EX MINOR CONTOUR	=====	= PROPOSED CONDUIT
---X---X---	= EX CULVERT	---TB---TB---	= PROPOSED TOP OF BANK
-----	= EX DITCH CL	-----95-----	= PROPOSED MAJOR CONTOUR
---X---X---	= EX FENCE	-----95-----	= PROPOSED MINOR CONTOUR
---FO---FO---	= EX FIBER OPTICS LINE	---X---X---	= PROPOSED FENCE
---G---G---	= EX GAS MAIN	-----	= PROPOSED HANDRAIL
---O---O---	= EX GUARDRAIL	-----	= PROPOSED CONSTRUCTION EASEMENT
-----	= EX GRAVEL	---FM---FM---	= PROPOSED SANITARY SEWER FORCE MAIN
-----	= EX PROPERTY BOUNDARY	---FO---FO---	= PROPOSED FIBER OPTICS
---PR---PR---	= EX POWER BURIED	---O---O---	= PROPOSED GRADE BREAK
-----	= EX ROAD CL	-----	= PROPOSED GUARDRAIL
-----	= EX EDGE OF PAVEMENT	-----	= PROPOSED GRAVEL
-----	= EX RIGHT OF WAY	-----	= PROPOSED PATH
-----	= EX TREE LINE	-----	= PROPOSED PARKING STRIPE
---SD---SD---	= EX STORM DRAIN	-----	= PROPOSED TRAFFIC STRIPE
---TS---TS---	= EX TRAFFIC SIGNAL CONDUCTOR	-----	= PROPOSED ROCK WALL
---SS---SS---	= EX SANITARY SEWER	-----	= PROPOSED BACK OF CURB
-----	= EX TRAFFIC STRIPING	-----	= PROPOSED ROAD CL
-----	= EX PARKING STRIPING	-----	= PROPOSED ROAD EDGE OF PAVEMENT
---TB---TB---	= EX TOP OF BANK	-----	= PROPOSED ROAD FACE OF CURB
---T---T---	= EX TELEPHONE LINE	-----	= PROPOSED ROAD LIP OF GUTTER
---OT---OT---	= EX OVERHEAD TELEPHONE	-----	= PROPOSED RIGHT OF WAY
---TV---TV---	= EX TV LINE	-----	= PROPOSED SAWCUT
---W---W---	= EX WATER LINE	---SD---	= PROPOSED STORM DRAIN
-----	= EX SIDEWALK	---SD---	= PROPOSED FIELD STORM DRAIN
-----	= EX WETLANDS BOUNDARY	---TS---TS---	= PROPOSED TRAFFIC SIGNAL CONDUCTOR
-----	= EX EASEMENT	---X---X---	= PROPOSED SILT FENCE
-----	= EX GRADE BREAK	---SS---	= PROPOSED SANITARY SEWER
---FM---FM---	= EX SANITARY SEWER FORCE MAIN	-----	= PROPOSED TREE LINE
-----	= EX FLOWLINE	---W---	= PROPOSED WATERMAIN
-----	= EXISTING RR TRACKS	-----	= PROPOSED SIDEWALK
-----	= EX BUILDING	-----	= PROPOSED PAVEMENT VALLEY
-----	= EX CONCRETE	-----	= PROPOSED ACP REMOVAL
-----	= EX MONITORING WELL	-----	= PROPOSED DEMOLITION AREA
-----	= EX SOIL BORING LOCATION	-----	= PROPOSED ASPHALT APRON
-----	= EX GUY WIRE	-----	= PROPOSED RIGHT OF WAY TAKE
-----	= EX STORM CLEANOUT	-----	= PROPOSED CONC. SIDEWALK / DRIVEWAY
-----	= EX SEWER CLEANOUT	-----	= PROPOSED INFILTRATION TRENCH
-----	= EX JBOX	-----	= PROPOSED INFILTRATION FILTER MEDIA
-----	= EX STREET LIGHT	-----	= PROPOSED BUILDING
-----	= EX MAIL BOX	-----	= PROPOSED MONITORING WELL
-----	= EX WATER METER	-----	= PROPOSED STORM DRAIN CATCH BASIN TYPE I
-----	= EX WATER SPIGOT	-----	= PROPOSED STORM DRAIN CATCH BASIN TYPE II
-----	= EX WATER VALVE	-----	= PROP STORM CLEANOUT
-----	= EX FIRE HYDRANT	-----	= PROPOSED STORM DRAIN INLET
-----	= EX TRAFFIC SIGNAL VAULT	-----	= PROPOSED SANITARY SEWER MANHOLE
-----	= EX SEWER MANHOLE	-----	= PROPOSED SANITARY SEWER MANHOLE
-----	= EX STORM DRAIN CATCH BASIN TYPE I	-----	= PROPOSED SANITARY SEWER CLEAN OUT
-----	= EX STORM DRAIN CATCH BASIN TYPE II	-----	= PROPOSED HYDRANT
-----	= EX UTILITY POLE	-----	= PROPOSED WATER METER
-----	= EX GAS METER	-----	= PROPOSED WATER VALVE
-----	= EX TRANSFORMER PAD	-----	= PROPOSED COUPLER
-----	= EX POWER VAULT	-----	= PROPOSED UTILITY POLE
-----	= EX SIGN	-----	= PROPOSED SIGN
-----	= EX TELEPHONE PEDESTAL	-----	= PROPOSED SIGN
-----	= EX SIGNAL POLE AND ARM W/ LUMINAIRE	-----	= FLOW ARROW
-----	= EX TREE	-----	= PROPOSED TREE
-----	= EX VEGETATION	-----	

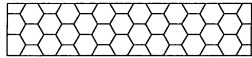
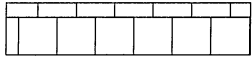


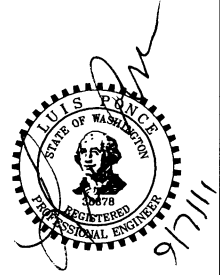
P:\Projects\11007\dwg\SP1.dwg, COV, 9/7/2011 5:25:35 PM

DESIGNED BY LP	REICHHARDT & EBE ENGINEERING, INC. CONSULTING ENGINEERS PO Box 978 423 Front St., Ste 201 Ph (360) 354-3687 Lynden, Washington 98264 Fax (360) 354-0407	NO.	DATE	REVISION	BY	CITY OF FERNDALE 2095 MAIN ST FERNDALE, WA 98248	EATON, SOMERSET, WILLARD AND WASHINGTON SEWER PROJECT COVER SHEET	JOB# / DWG 11007 SP1	DATE 9-7-11
DRAWN BY LMC		SCALE h:n/a v:n/a	SHEET 1 of 15						
CHECKED BY LP									

P:\Projects\11007\dwg\SP1.dwg, COV, 9/7/2011 5:20:35 PM



 = BASE BID
 = ALTERNATE A1



DESIGNED BY
LP
 DRAWN BY
LMC
 CHECKED BY
LP



REICHHARDT & EBE
 ENGINEERING, INC.
 CONSULTING ENGINEERS
 PO Box 978 423 Front St., Ste 201 Ph (360) 354-3687
 Lynden, Washington 98264 Fax (360) 354-0407

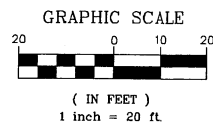
NO.	DATE	REVISION	BY

CITY OF FERDALE
 2095 MAIN ST
 FERDALE, WA 98248

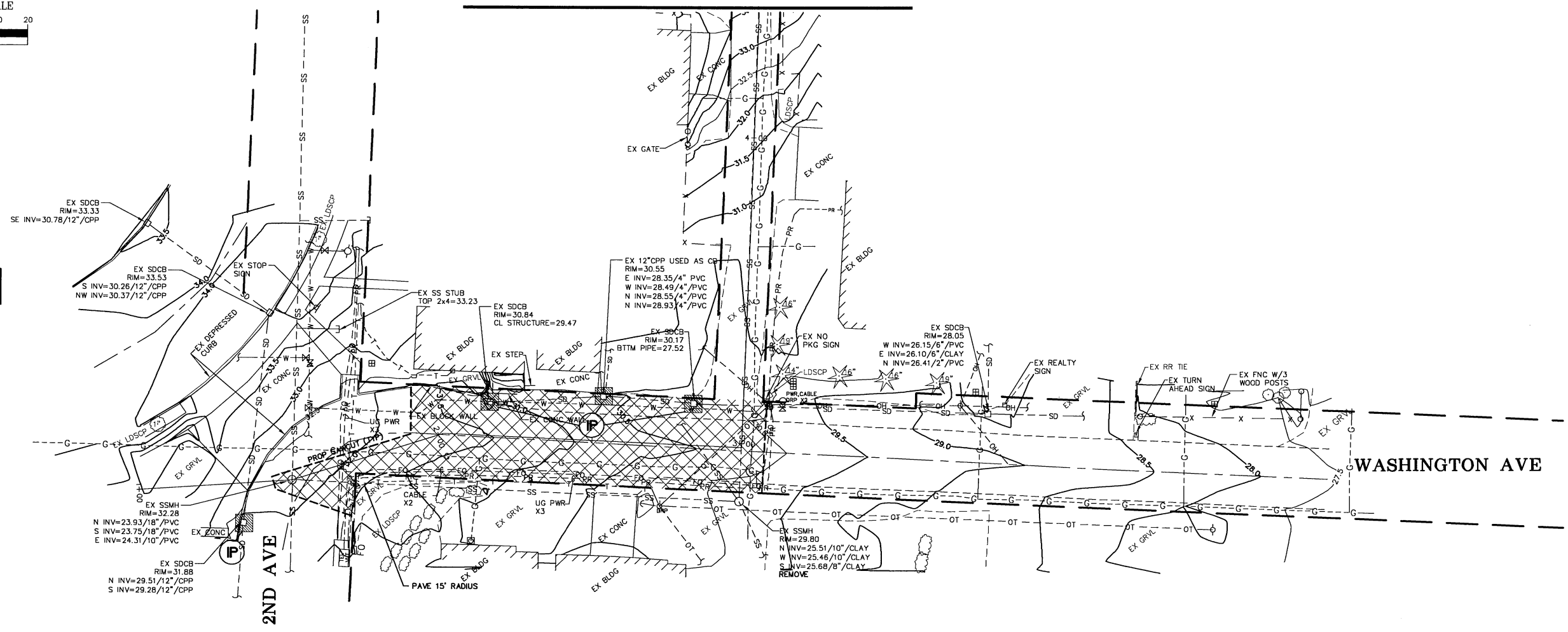
EATON, SOMERSET, WILLARD AND
 WASHINGTON SEWER PROJECT
 KEY MAP

JOB# / DWG 11007 SP1	DATE 9-7-11
SCALE H:n/a V:n/a	SHEET 2 of 15

MATCHLINE THIS SHEET



(P) = INLET PROTECTION



WASHINGTON AVE

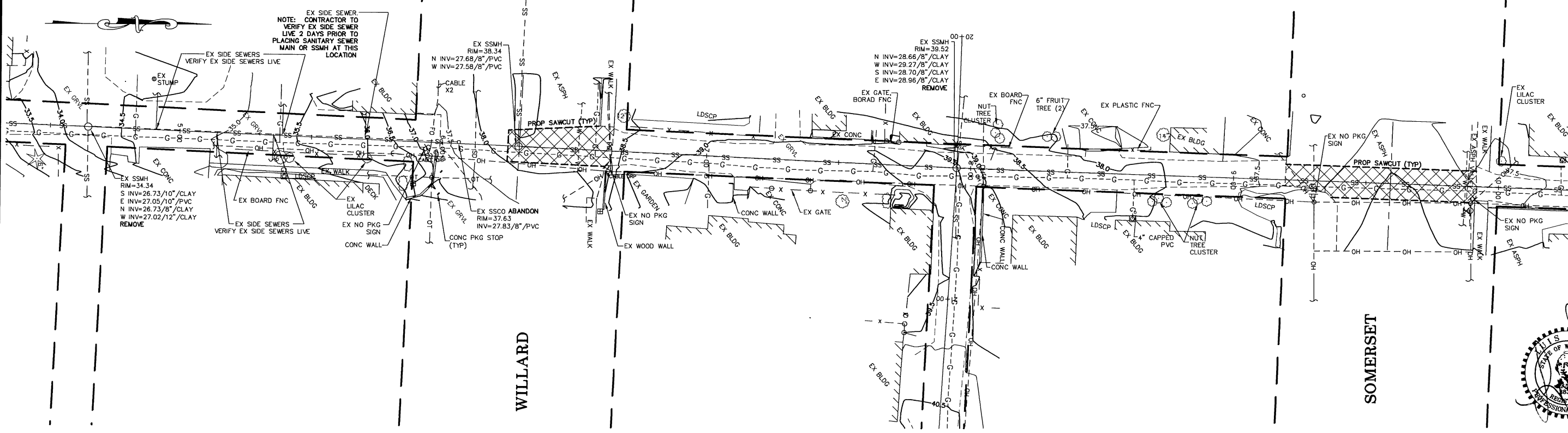
2ND AVE

WILLARD

SOMERSET

MATCHLINE THIS SHEET

MATCHLINE SHT 4



P:\Projects\11007\dwg\SP1.dwg, EX COND-EC-DEMO, 9/7/2011 5:10:32 PM

DESIGNED BY LP
DRAWN BY LMC
CHECKED BY LP



REICHHARDT & EBE
ENGINEERING, INC.
CONSULTING ENGINEERS
PO Box 978 423 Front St., Ste 201 Ph (360) 354-3687
Lynden, Washington 98264 Fax (360) 354-0407

NO.	DATE	REVISION	BY

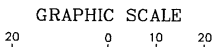
CITY OF FERDALE
2095 MAIN ST
FERDALE, WA 98248

EATON, SOMERSET, WILLARD AND
WASHINGTON SEWER PROJECT
EXISTING CONDITIONS, TESC AND DEMO PLAN

JOB# / DWG 11007 SP1
SCALE H:1"=20' v:n/a

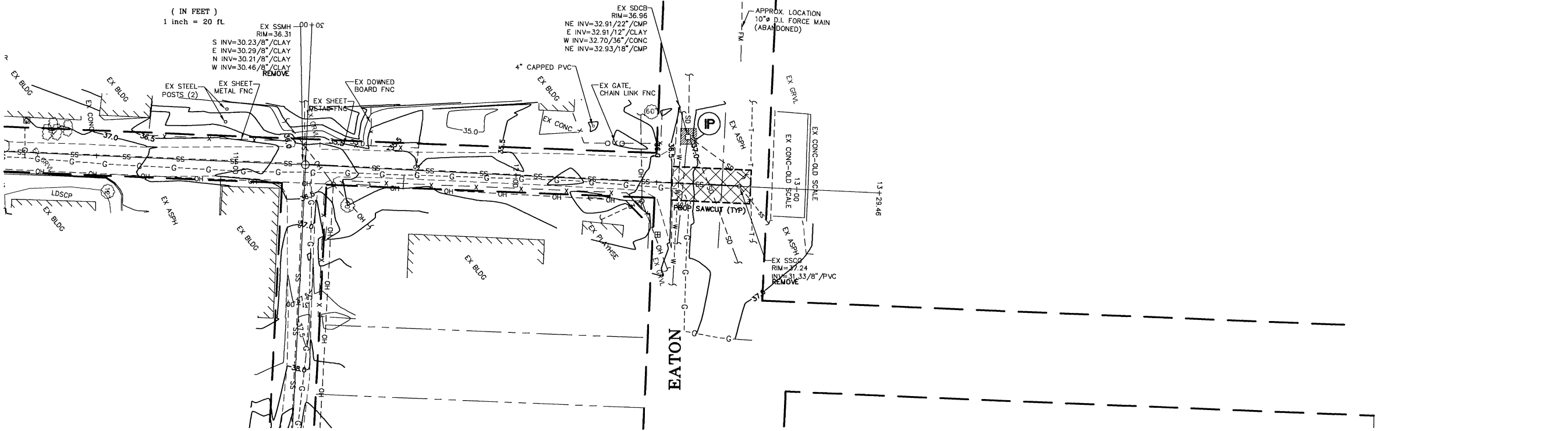
DATE 9-7-11
SHEET 3 of 15



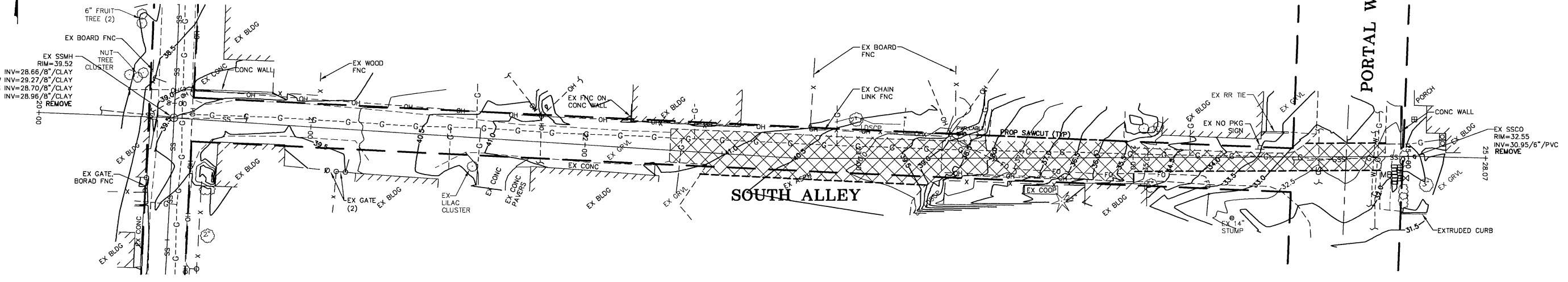


(IN FEET)
1 inch = 20 ft

MATCHLINE SHT 3



P = INLET PROTECTION



P:\Projects\11007\dwg\SP1.dwg, EX COND-EC-DEMO, 9/7/2011 5:11:10 PM

DESIGNED BY LP
DRAWN BY LMC
CHECKED BY LP



REICHHARDT & EBE
ENGINEERING, INC.
CONSULTING ENGINEERS
PO Box 978 423 Front St., Ste 201 Ph (360) 354-3687
Lynden, Washington 98264 Fax (360) 354-0407

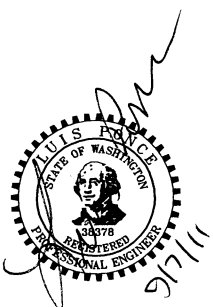
NO.	DATE	REVISION	BY

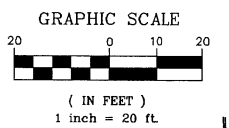
CITY OF FERDALE
2095 MAIN ST
FERDALE, WA 98248

EATON, SOMERSET, WILLARD AND WASHINGTON SEWER PROJECT
EXISTING CONDITIONS, TESC AND DEMO PLAN

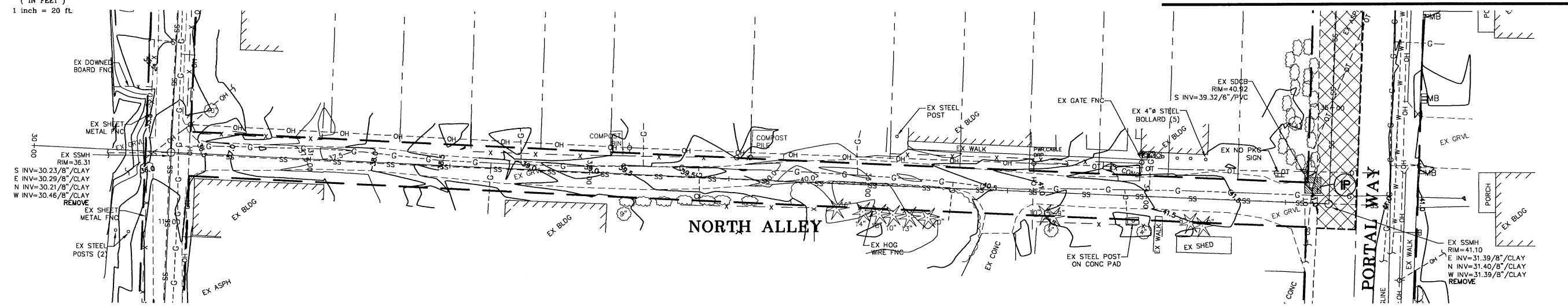
JOB# / DWG 11007 SP1
SCALE h:1"=20' v:n/a

DATE 9-7-11
SHEET 4 of 15

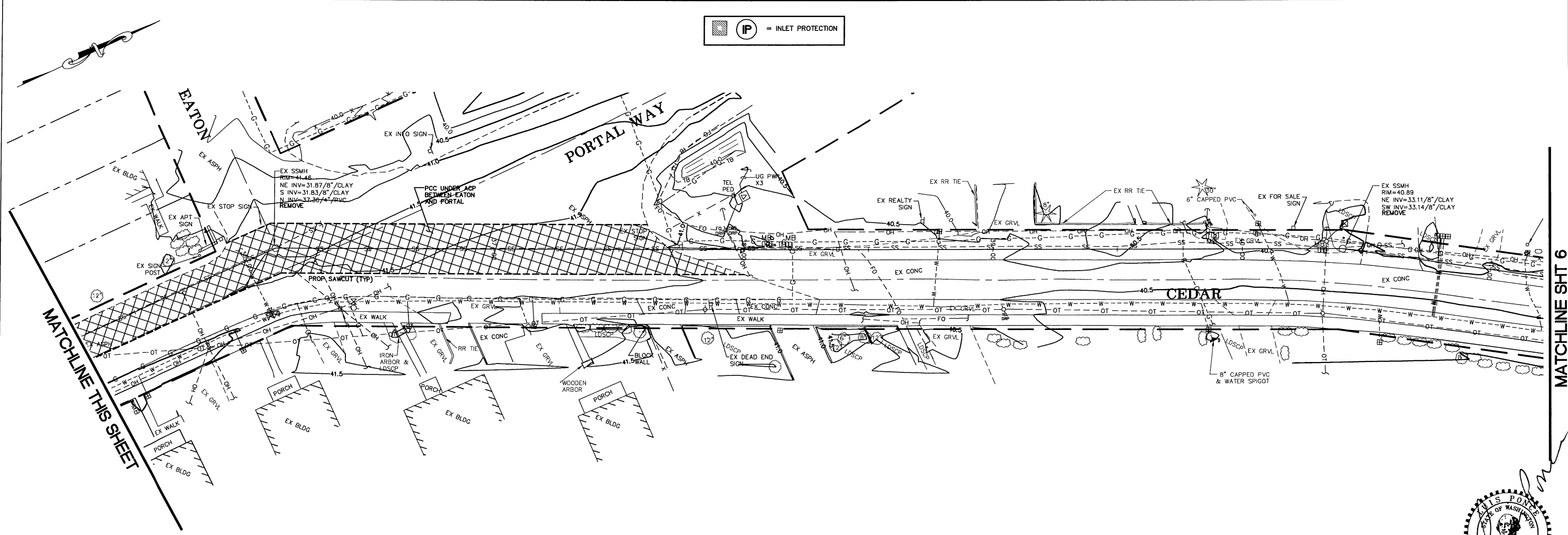




MATCHLINE THIS SHEET

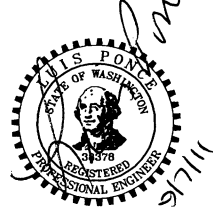


IP = INLET PROTECTION



MATCHLINE THIS SHEET

MATCHLINE SH 6



DESIGNED BY LP
DRAWN BY LMC
CHECKED BY LP



REICHHARDT & EBE
ENGINEERING, INC.
CONSULTING ENGINEERS
PO Box 978 423 Front St, Ste 201
Lynden, Washington 98264 Ph (360) 354-3687
Fax (360) 354-0407

CITY OF FERDALE
2095 MAIN ST
FERDALE, WA 98248

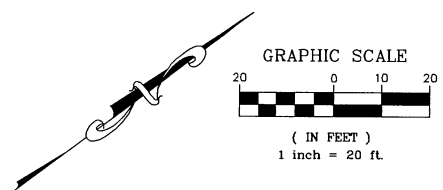
**EATON, SOMERSET, WILLARD AND
WASHINGTON SEWER PROJECT**
EXISTING CONDITIONS, TESC AND DEMO PLAN

JOB # / DWG 11007 SP1
SCALE H:1"=20' v:n/a

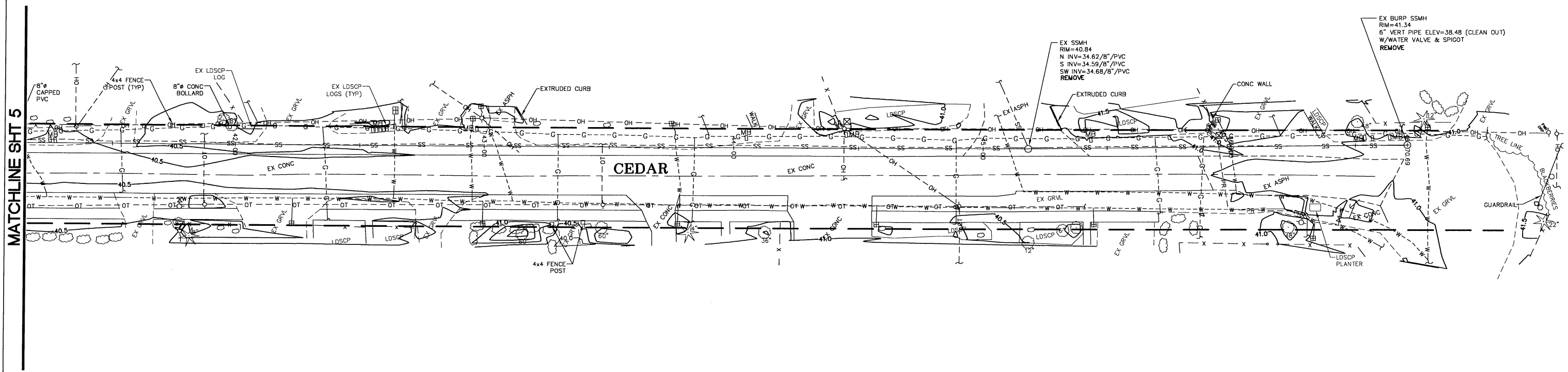
DATE 9-7-11
SHEET 5 of 15

NO.	DATE	REVISION	BY

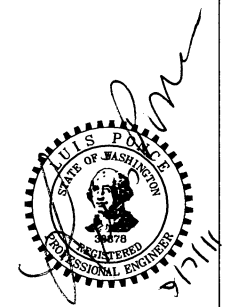
P:\Projects\11007\dwg\SP1.dwg, EX COND-EC-DEMO, 9/7/2011 5:11:51 PM



P = INLET PROTECTION



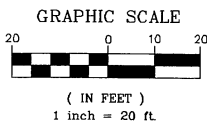
MATCHLINE SHT 5



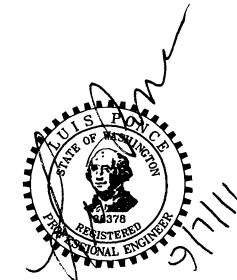
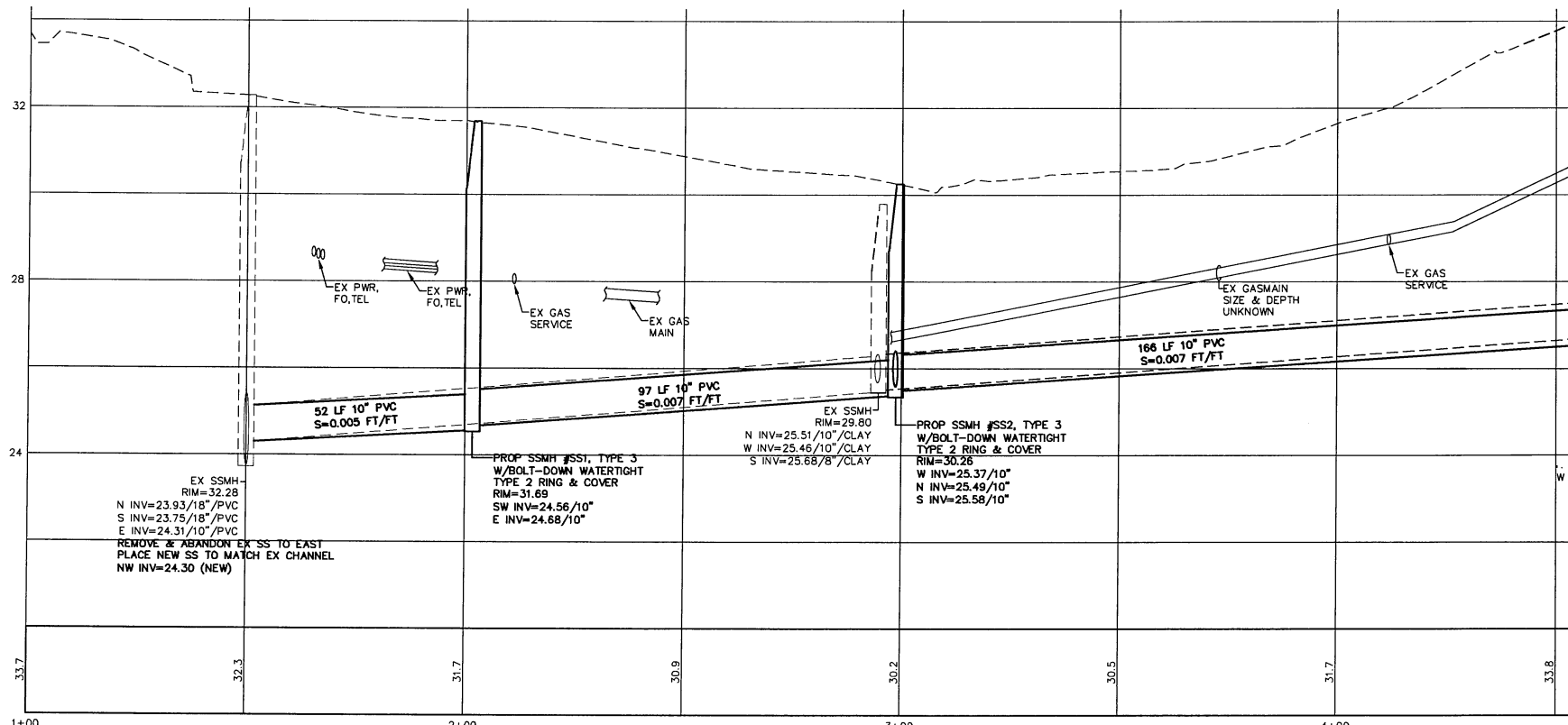
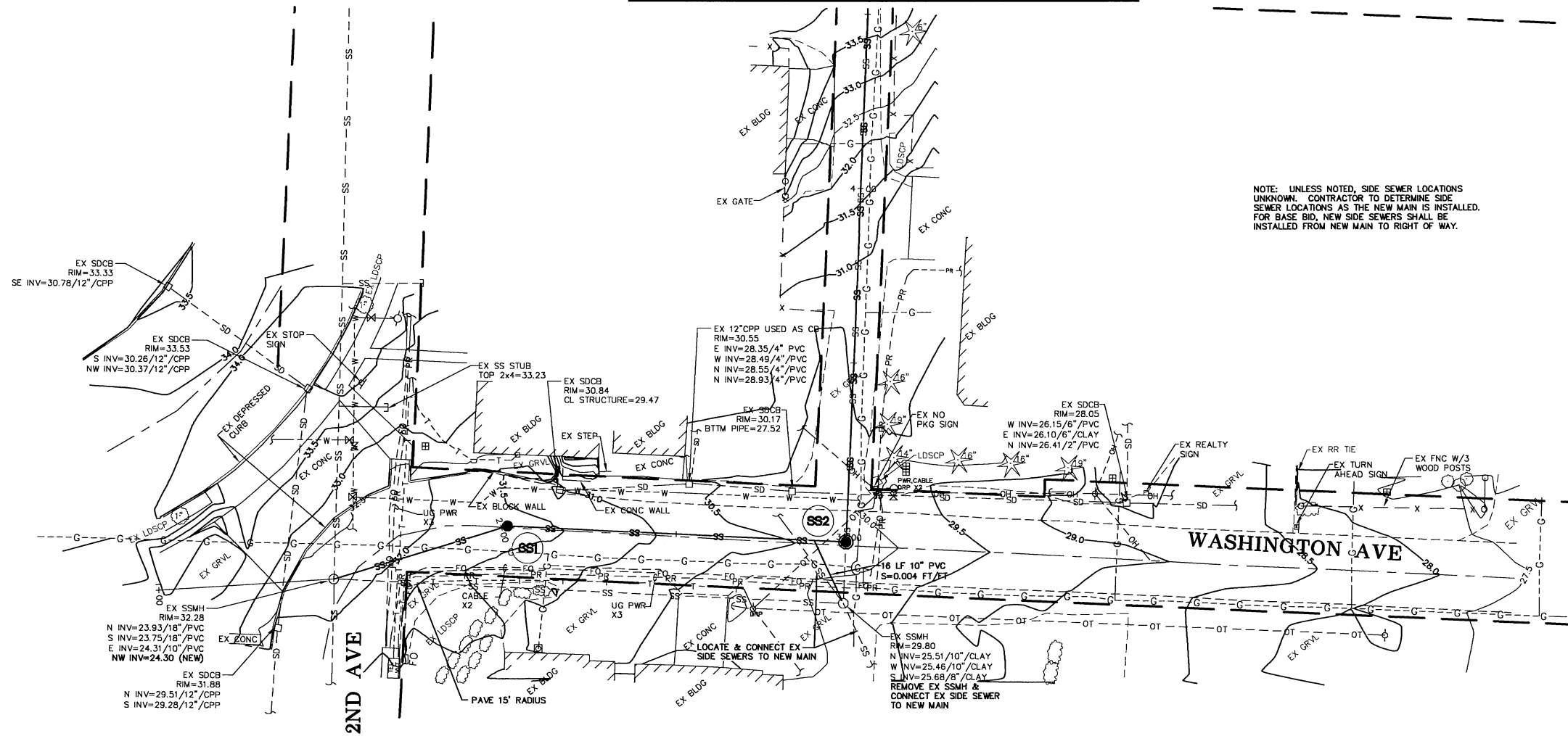
P:\Projects\11007\dwg\SP1.dwg, EX COND-EC-DEMO, 9/7/2011 5:12:32 PM

DESIGNED BY LP DRAWN BY LMC CHECKED BY LP	REICHHARDT & EBE ENGINEERING, INC. CONSULTING ENGINEERS PO Box 978 423 Front St., Ste 201 Ph (360) 354-3687 Lynden, Washington 98264 Fax (360) 354-0407	NO. DATE REVISION BY	CITY OF FERDALE 2095 MAIN ST FERDALE, WA 98248	EATON, SOMERSET, WILLARD AND WASHINGTON SEWER PROJECT EXISTING CONDITIONS, TESC AND DEMO PLAN	JOB# / DWG 11007 SP1	DATE 9-7-11
					SCALE H:1"=20' V:n/a	SHEET 6 of 15

MATCHLINE SHT 8



NOTE: UNLESS NOTED, SIDE SEWER LOCATIONS UNKNOWN. CONTRACTOR TO DETERMINE SIDE SEWER LOCATIONS AS THE NEW MAIN IS INSTALLED. FOR BASE BID, NEW SIDE SEWERS SHALL BE INSTALLED FROM NEW MAIN TO RIGHT OF WAY.



DESIGNED BY LP
 DRAWN BY LMC
 CHECKED BY LP



REICHHARDT & EBE
 ENGINEERING, INC.
 CONSULTING ENGINEERS
 PO Box 978 423 Front St., Ste 201 Ph (360) 354-3687
 Lynden, Washington 98264 Fax (360) 354-0407

NO.	DATE	REVISION	BY

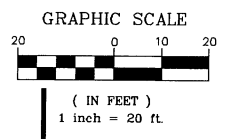
CITY OF FERDALE
 2095 MAIN ST
 FERDALE, WA 98248

EATON, SOMERSET, WILLARD AND
 WASHINGTON SEWER PROJECT
 PROPOSED SANITARY SEWER BASE BID

JOB# / DWG 11007 SP1
 SCALE h:1"=20' v:1"=2'

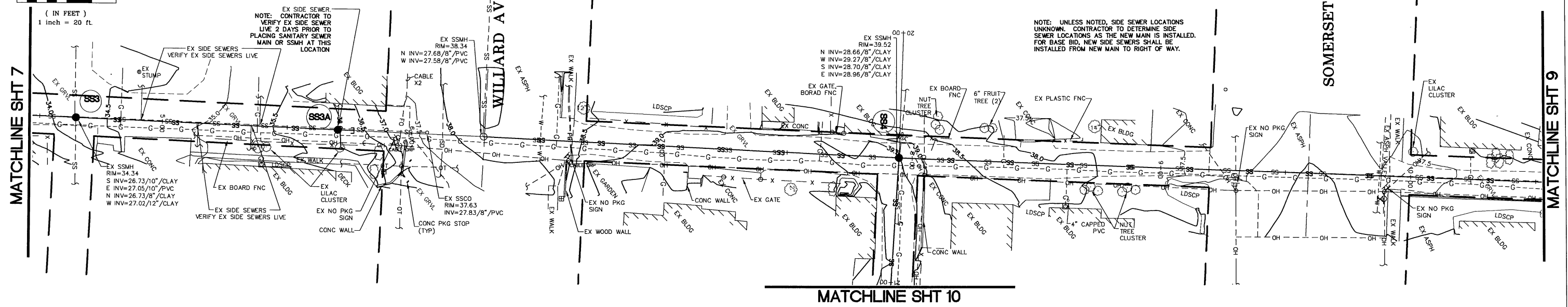
DATE 9-7-11
 SHEET 7 of 15

P:\Projects\11007.dwg\ISP1.dwg, WASHINGTON, 9/7/2011 5:32:03 PM

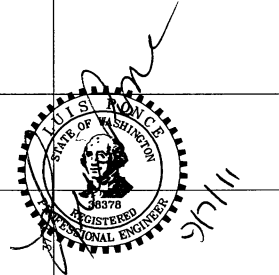
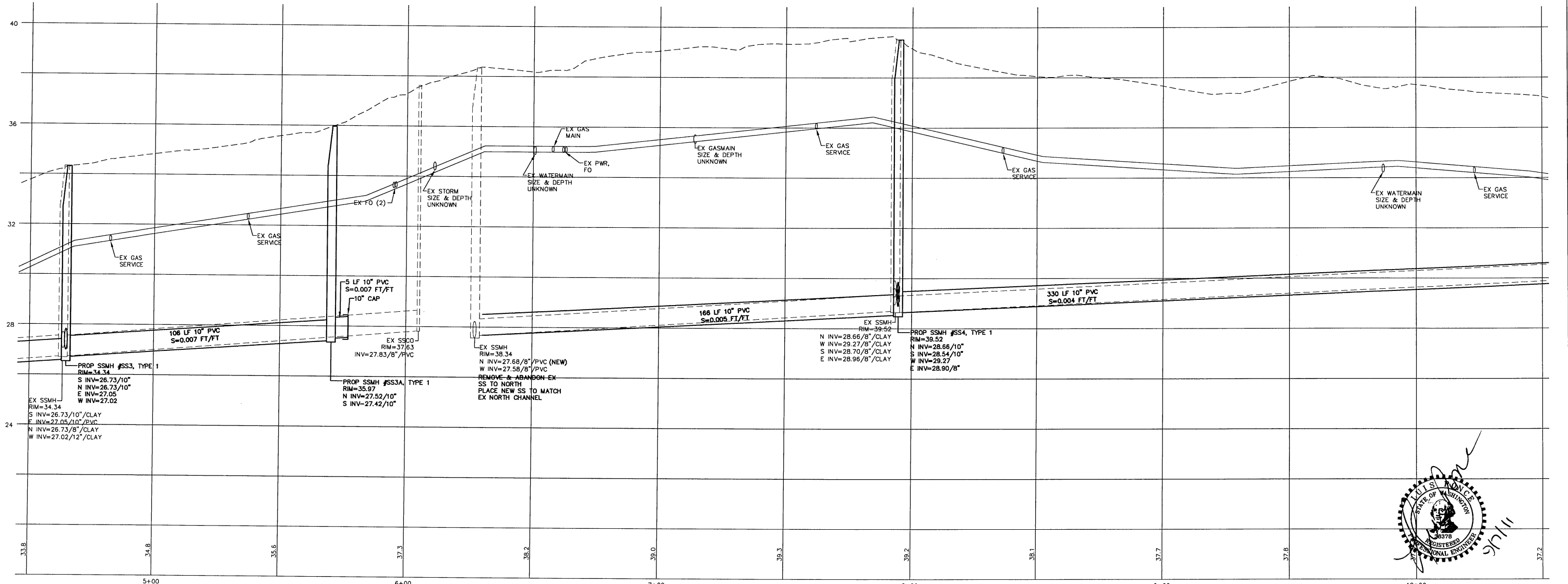


MATCHLINE SHT 7

MATCHLINE SHT 9

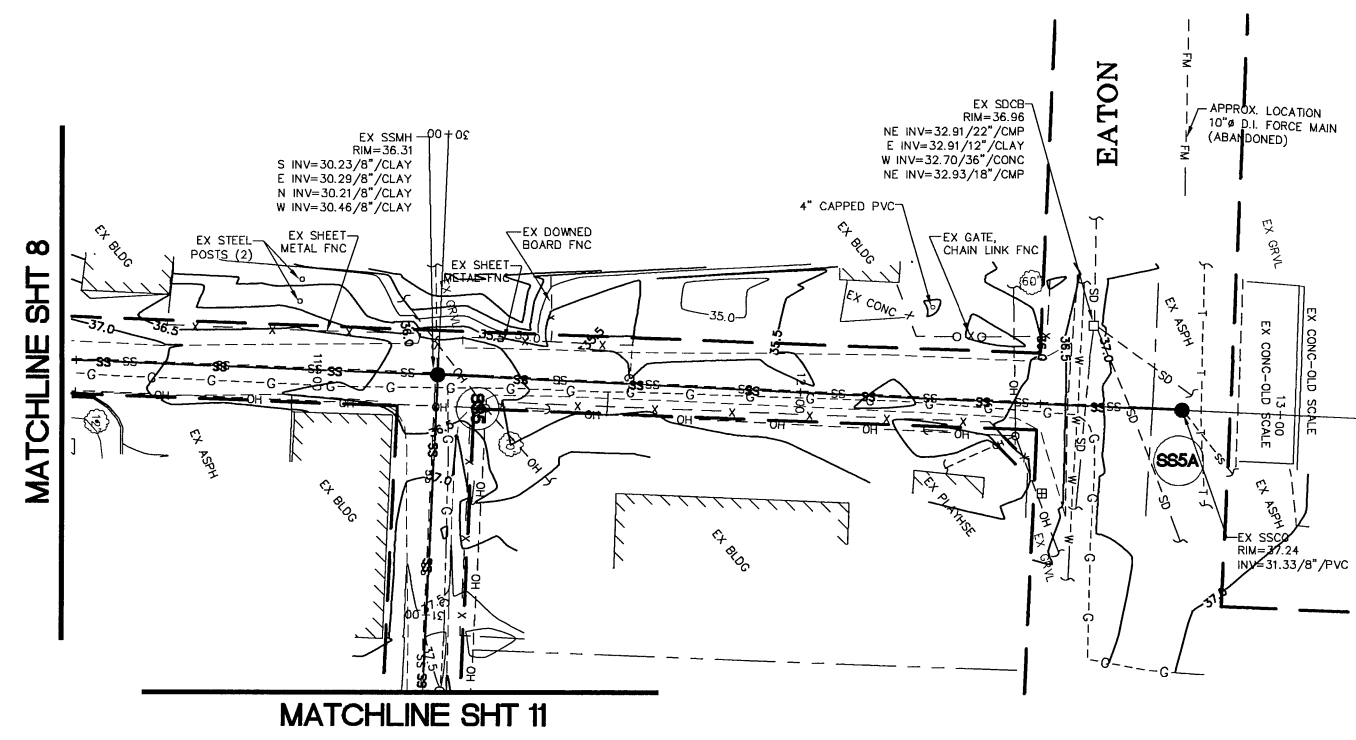
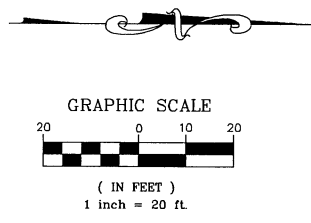


MATCHLINE SHT 10

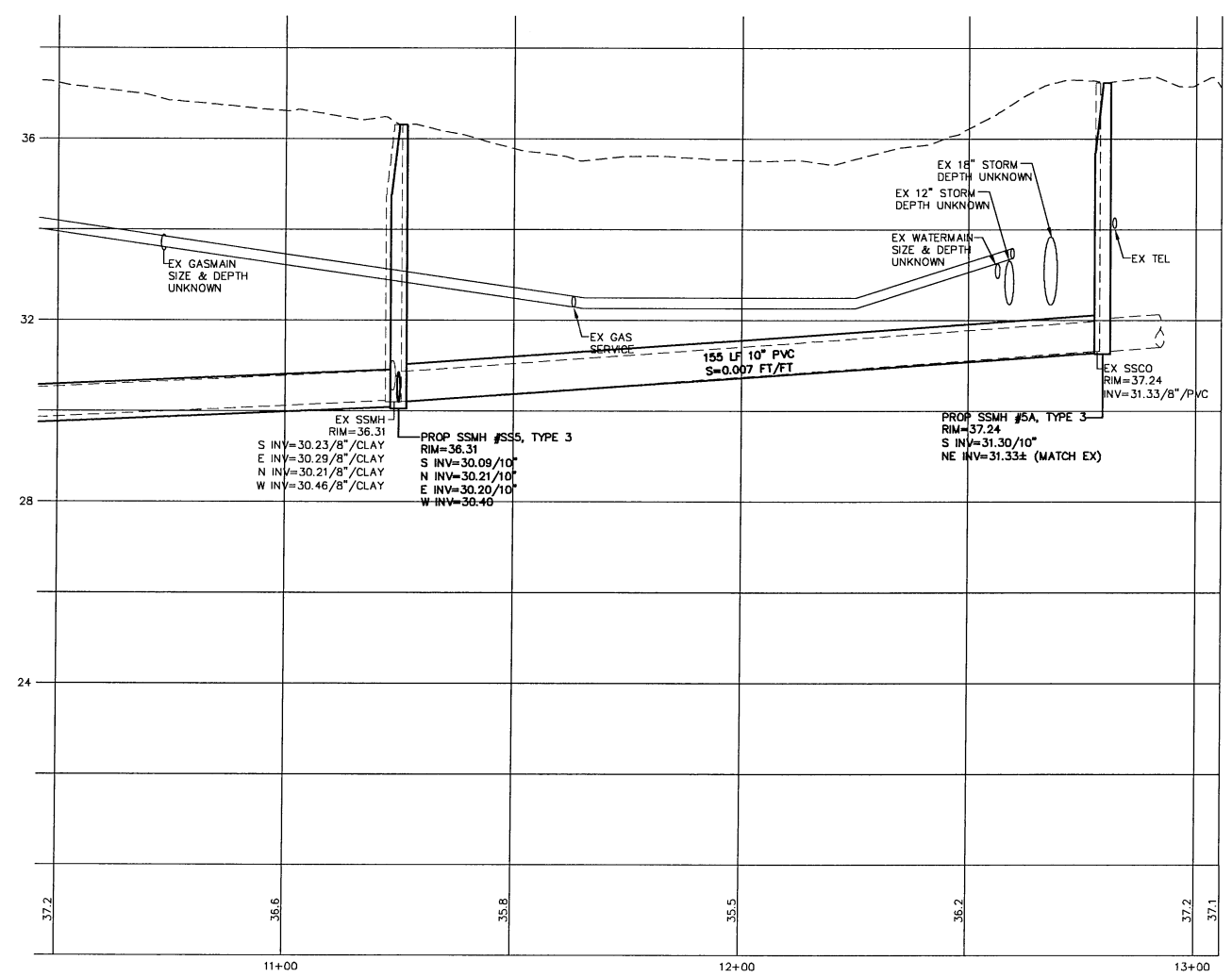


P:\Projects\11007\dwg\SP1.dwg, ALLEY WA-EATON 1, 9/7/2011 5:15:51 PM

DESIGNED BY LP	REICHARDT & EBE ENGINEERING, INC. CONSULTING ENGINEERS PO Box 978 423 Front St., Ste 201 Lynden, Washington 98264 Ph (360) 354-3687 Fax (360) 354-0407	NO.	DATE	REVISION	BY	CITY OF FERDALE 2095 MAIN ST FERDALE, WA 98248	EATON, SOMERSET, WILLARD AND WASHINGTON SEWER PROJECT PROPOSED SANITARY SEWER BASE BID	JOB# / DWG 11007 SP1	DATE 9-7-11
DRAWN BY LMC		SCALE H:1"=20' V:1"=2'	SHEET 8 of 15						
CHECKED BY LP									

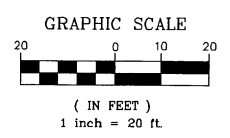


NOTE: UNLESS NOTED, SIDE SEWER LOCATIONS UNKNOWN. CONTRACTOR TO DETERMINE SIDE SEWER LOCATIONS AS THE NEW MAIN IS INSTALLED. FOR BASE BID, NEW SIDE SEWERS SHALL BE INSTALLED FROM NEW MAIN TO RIGHT OF WAY.



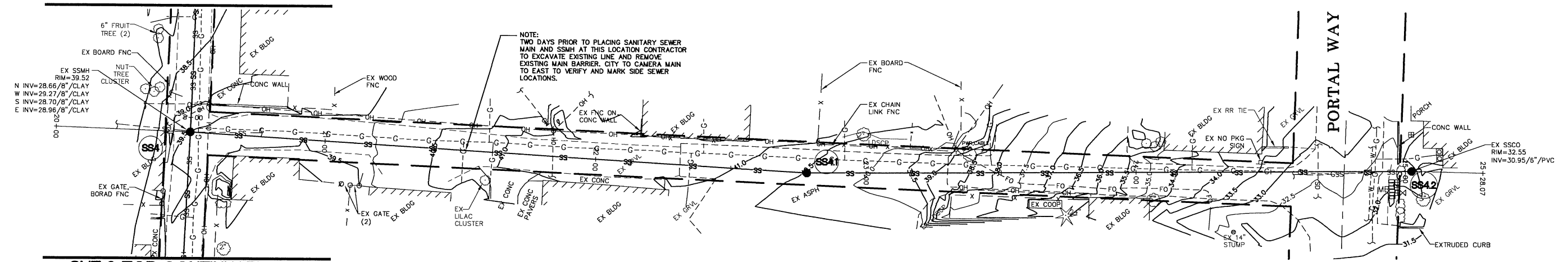
P:\Projects\11007\dwg\SP1.dwg, ALLEY WA-EATON 2, 9/7/2011 5:16:33 PM

DESIGNED BY LP	REICHHARDT & EBE ENGINEERING, INC. CONSULTING ENGINEERS PO Box 978 423 Front St., Ste 201 Ph (360) 354-3687 Lynden, Washington 98264 Fax (360) 354-0407	NO.	DATE	REVISION	BY	CITY OF FERDALE 2095 MAIN ST FERDALE, WA 98248	EATON, SOMERSET, WILLARD AND WASHINGTON SEWER PROJECT PROPOSED SANITARY SEWER BASE BID	JOB# / DWG 11007 SP1	DATE 9-7-11
DRAWN BY LMC		SCALE H:1"=20' V:1"=2'	SHEET 9 of 15						
CHECKED BY LP									

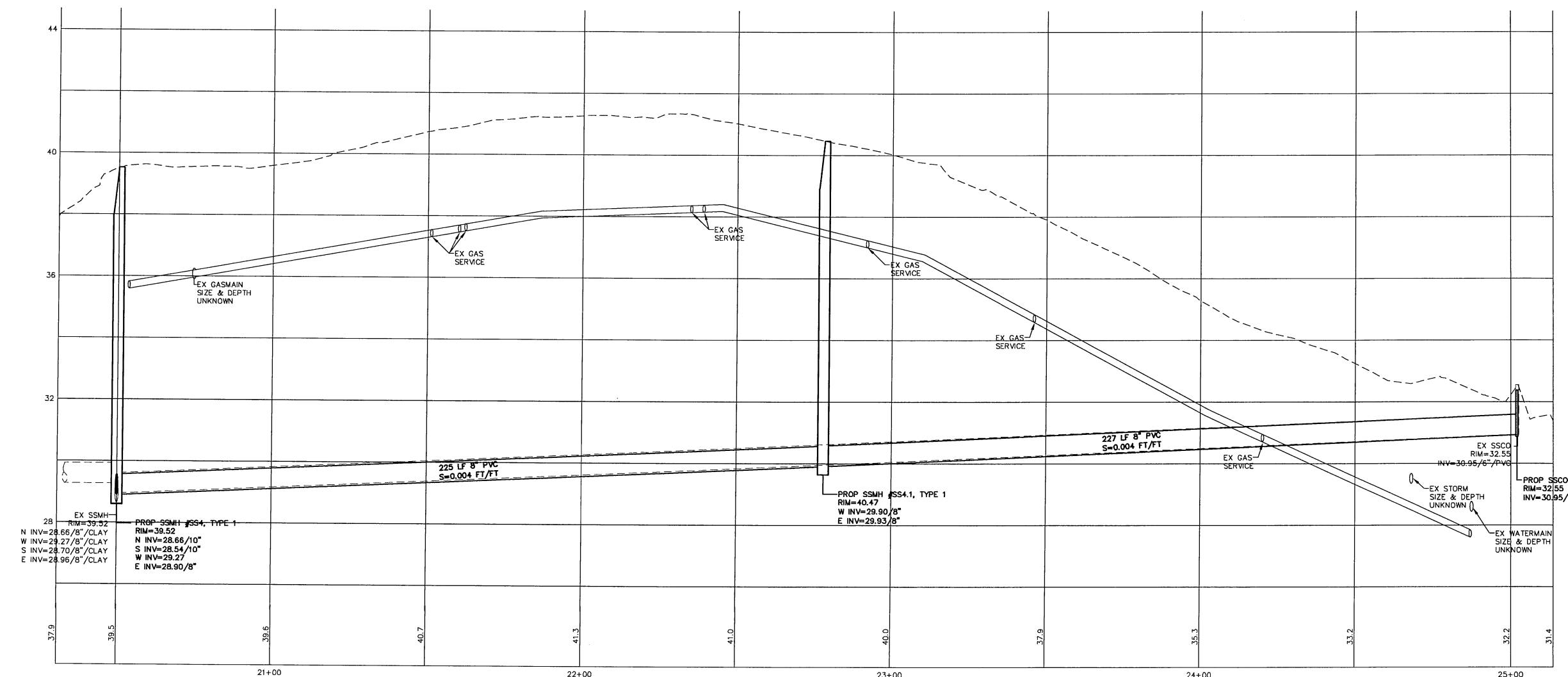


SHT 8 FOR CONTINUATION

NOTE: UNLESS NOTED, SIDE SEWER LOCATIONS UNKNOWN. CONTRACTOR TO DETERMINE SIDE SEWER LOCATIONS AS THE NEW MAIN IS INSTALLED. FOR BASE BID, NEW SIDE SEWERS SHALL BE INSTALLED FROM NEW MAIN TO RIGHT OF WAY.



SHT 8 FOR CONTINUATION



P:\Projects\11007\dwg\SP1.dwg, S ALLEY, 9/7/2011 5:17:30 PM

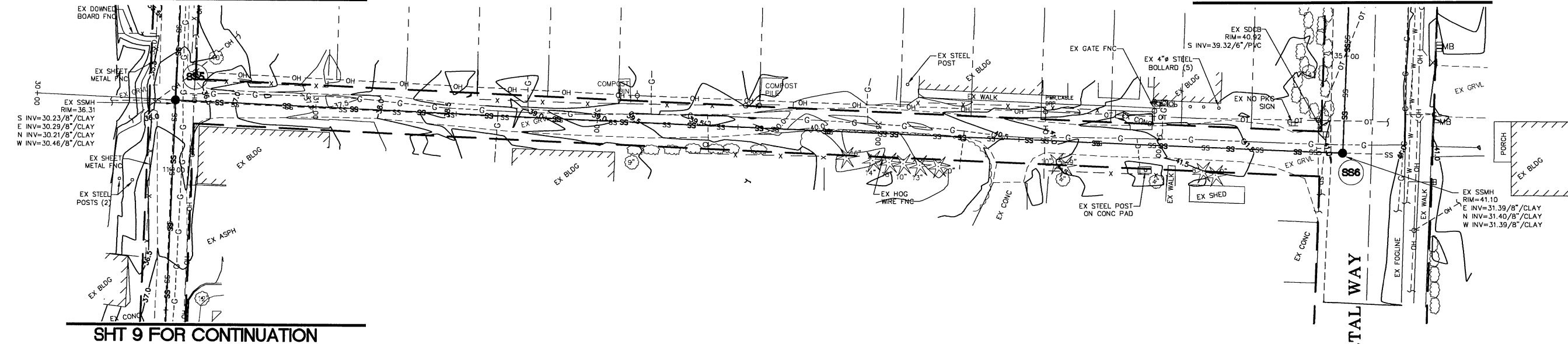
DESIGNED BY LP DRAWN BY LMC CHECKED BY LP	REICHHARDT & EBE ENGINEERING, INC. CONSULTING ENGINEERS PO Box 978 423 Front St, Ste 201 Ph (360) 354-3687 Lynden, Washington 98264 Fax (360) 354-0407	NO. DATE REVISION BY	CITY OF FERDALE 2095 MAIN ST FERDALE, WA 98248	EATON, SOMERSET, WILLARD AND WASHINGTON SEWER PROJECT PROPOSED SANITARY SEWER BASE BID	JOB# / DWG 11007 SP1 SCALE H:1"=20' v:1"=2'	DATE 9-7-11 SHEET 10 of 15
--	---	-------------------------------------	---	--	--	--

GRAPHIC SCALE



(IN FEET)
1 inch = 20 ft.

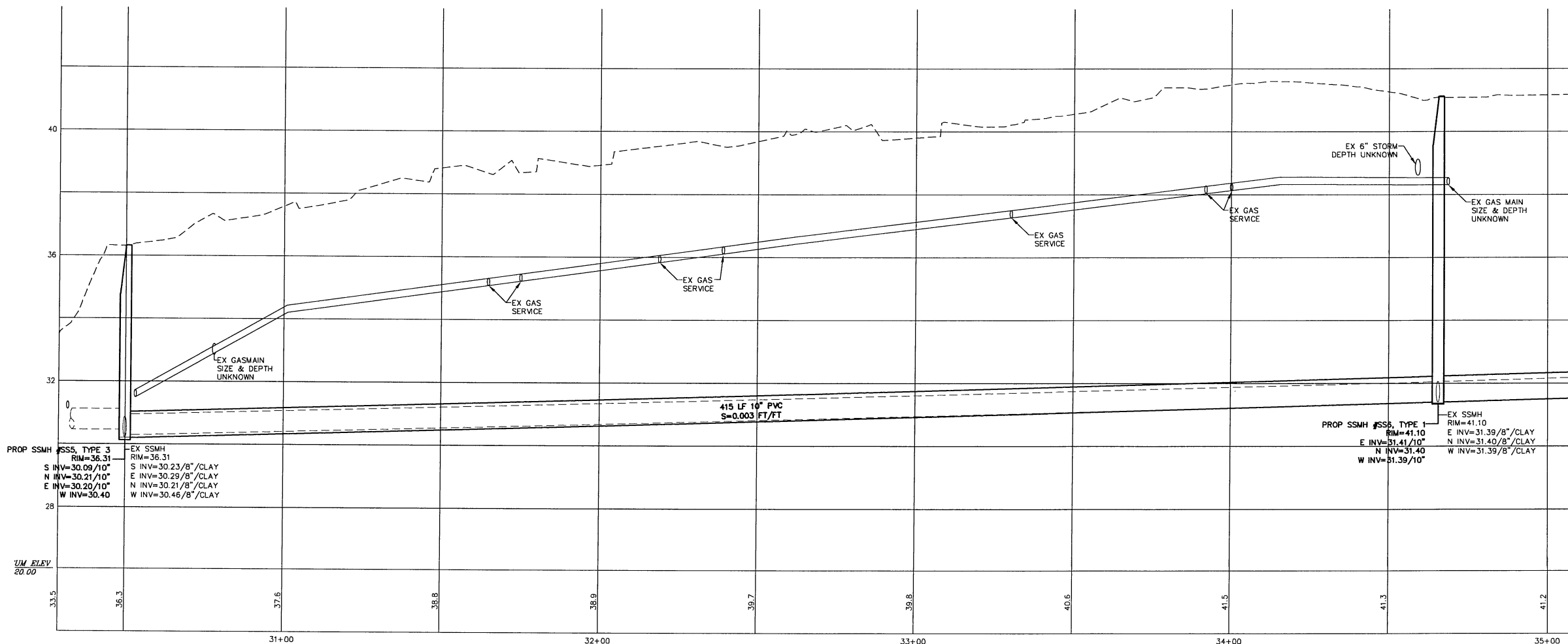
SHT 9 FOR CONTINUATION



MATCHLINE SHT 12

SHT 9 FOR CONTINUATION

NOTE: SIDE SEWER LOCATIONS UNKNOWN. CONTRACTOR TO DETERMINE SIDE SEWER LOCATIONS AS THE NEW MAIN IS INSTALLED. BETWEEN STA 30+50 TO STA 34+75, SIDE SEWERS SHALL BE INSTALLED FROM THE NEW MAIN TO THE RIGHT OF WAY. BETWEEN STA 34+75 TO STA 46+50, 5 FEET OF SIDE SEWERS SHALL BE INSTALLED FROM THE NEW MAIN AND CONNECTED TO THE EXISTING SIDE SEWER.



DESIGNED BY
LP
DRAWN BY
LMC
CHECKED BY
LP



REICHHARDT & EBE
ENGINEERING, INC.
CONSULTING ENGINEERS

PO Box 978 423 Front St., Ste 201 Ph (360) 354-3687
Lynden, Washington 98264 Fax (360) 354-0407

NO.	DATE	REVISION	BY

CITY OF FERDALE
2095 MAIN ST
FERDALE, WA 98248

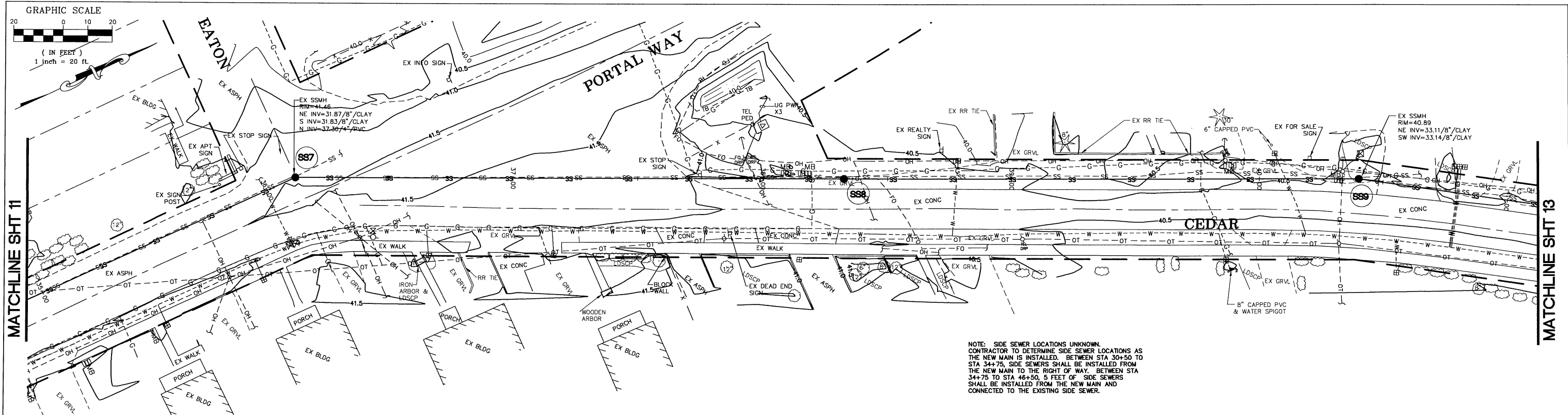
EATON, SOMERSET, WILLARD AND
WASHINGTON SEWER PROJECT
PROPOSED SANITARY SEWER ALTERNATE A1

JOB # / DWG	11007 SP1	DATE	9-7-11
SCALE	H:1"=20' V:1"=2'	SHEET	11 of 15

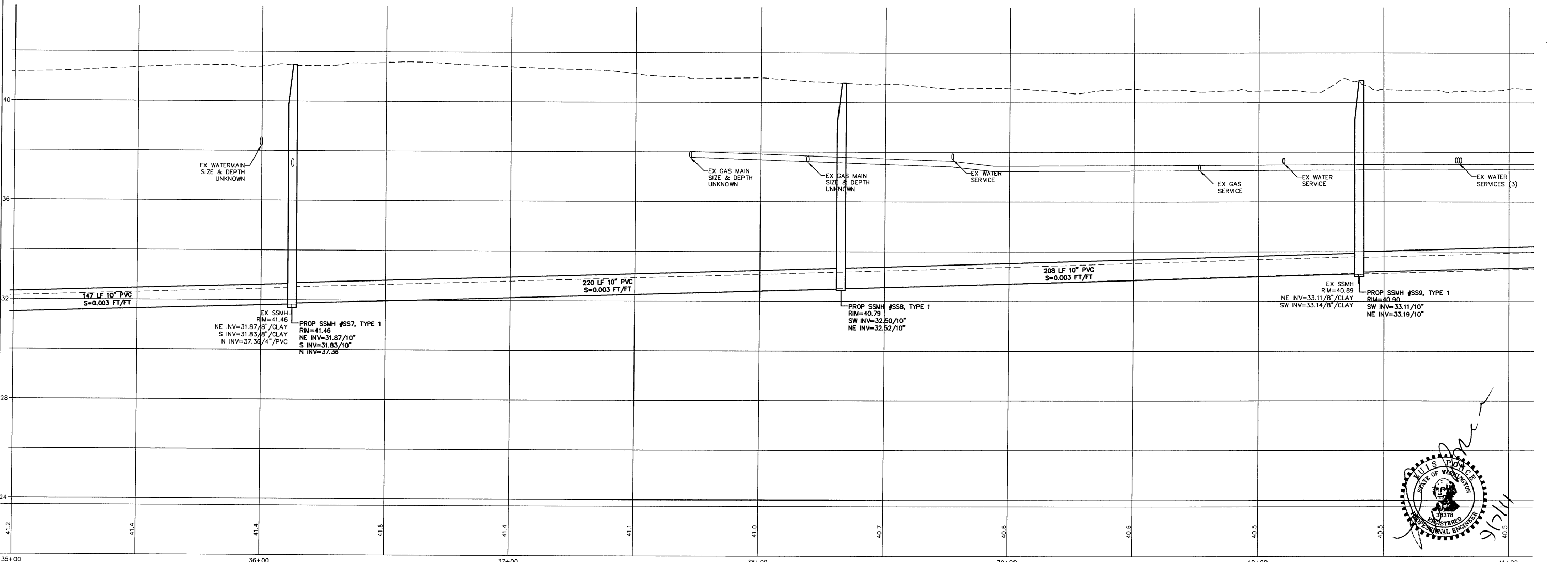
GRAPHIC SCALE



(IN FEET)
1 inch = 20 ft.

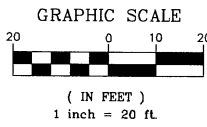


NOTE: SIDE SEWER LOCATIONS UNKNOWN.
CONTRACTOR TO DETERMINE SIDE SEWER LOCATIONS AS
THE NEW MAIN IS INSTALLED. BETWEEN STA 30+50 TO
STA 34+75, SIDE SEWERS SHALL BE INSTALLED FROM
THE NEW MAIN TO THE RIGHT OF WAY. BETWEEN STA
34+75 TO STA 46+50, 5 FEET OF SIDE SEWERS
SHALL BE INSTALLED FROM THE NEW MAIN AND
CONNECTED TO THE EXISTING SIDE SEWER.

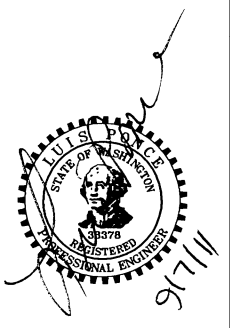
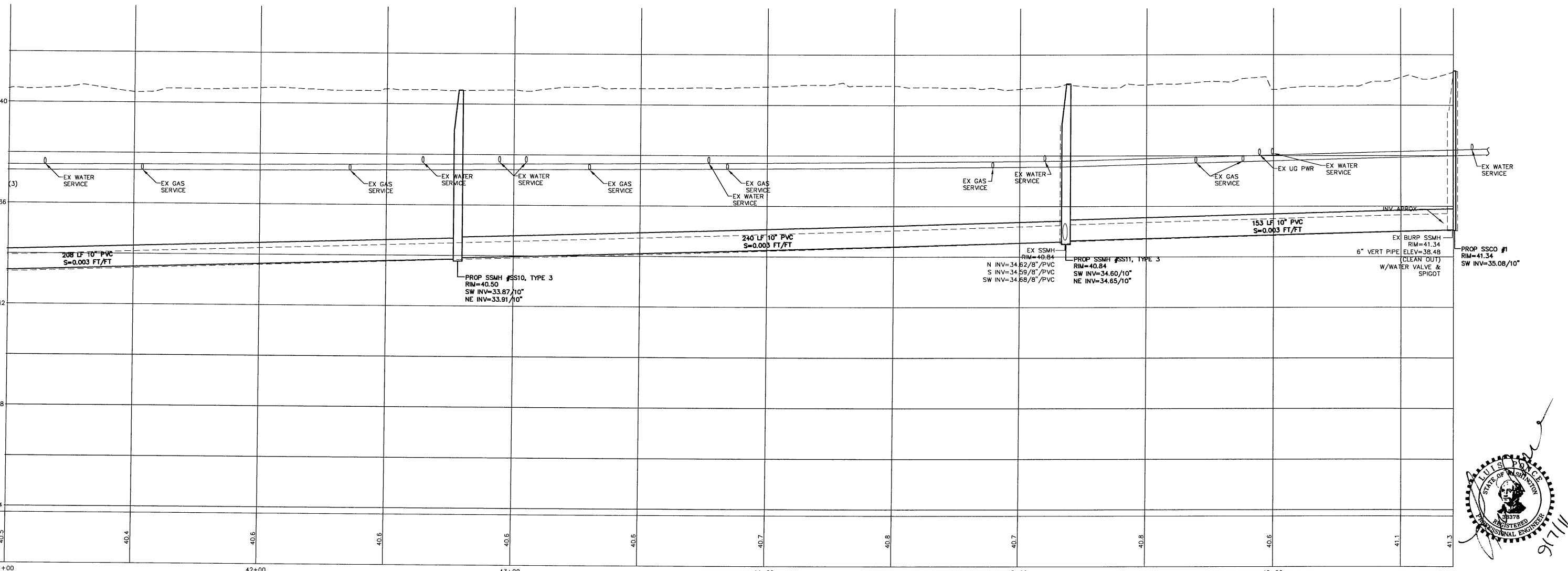
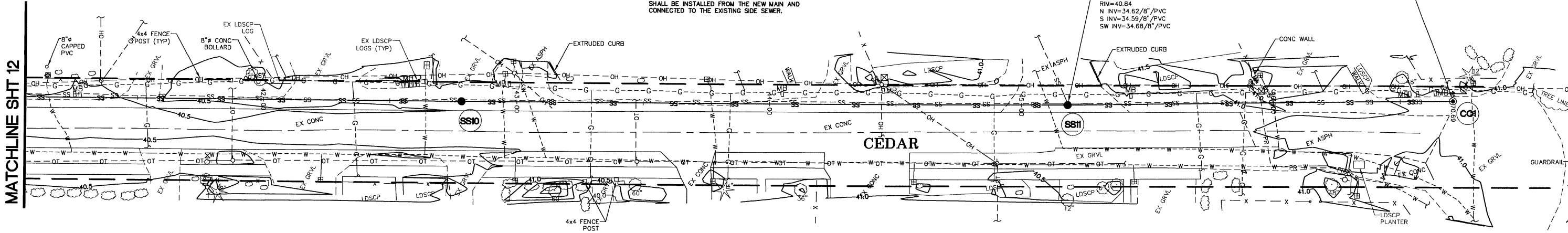


P:\Projects\11007\dwg\SP1.dwg, CEDAR, 9/7/2011 5:19:08 PM

DESIGNED BY LP		REICHHARDT & EBE ENGINEERING, INC. CONSULTING ENGINEERS PO Box 978 423 Front St., Ste 201 Ph (360) 354-3687 Lynden, Washington 98264 Fax (360) 354-0407	NO.	DATE	REVISION	BY	CITY OF FERDALE 2095 MAIN ST FERDALE, WA 98248	EATON, SOMERSET, WILLARD AND WASHINGTON SEWER PROJECT PROPOSED SANITARY SEWER ALTERNATE A1	JOB # / DWG 11007 SP1	DATE 9-7-11
DRAWN BY LMC			SCALE H:1"=20' V:1"=2'	SHEET 12 of 15						
CHECKED BY LP										



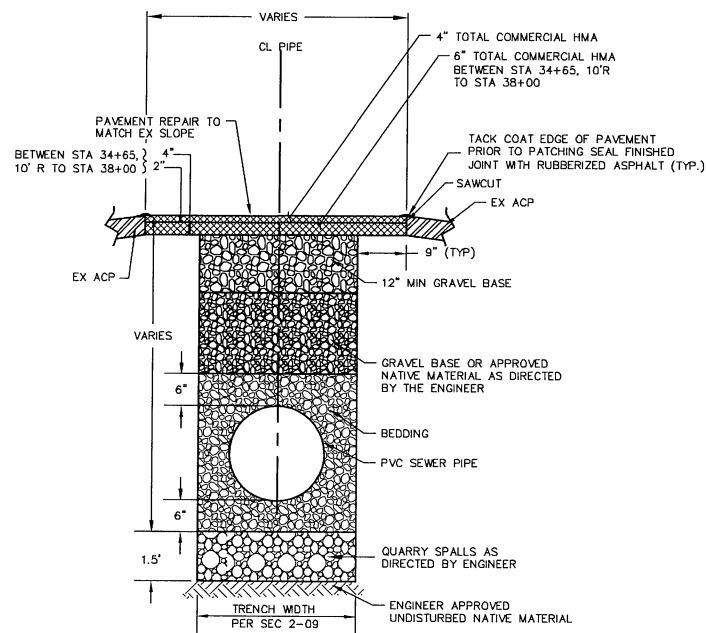
NOTE: SIDE SEWER LOCATIONS UNKNOWN.
 CONTRACTOR TO DETERMINE SIDE SEWER LOCATIONS AS THE NEW MAIN IS INSTALLED. BETWEEN STA 30+50 TO STA 34+75, SIDE SEWERS SHALL BE INSTALLED FROM THE NEW MAIN TO THE RIGHT OF WAY. BETWEEN STA 34+75 TO STA 46+50, 5 FEET OF SIDE SEWERS SHALL BE INSTALLED FROM THE NEW MAIN AND CONNECTED TO THE EXISTING SIDE SEWER.



P:\Projects\11007.dwg\ISP1.dwg, CEDAR, 9/7/2011 5:19:52 PM

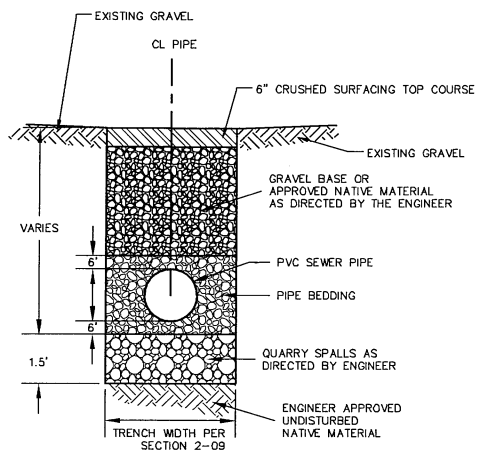
DESIGNED BY LP DRAWN BY LMC CHECKED BY LP	 REICHHARDT & EBE ENGINEERING, INC. CONSULTING ENGINEERS PO Box 978 423 Front St., Ste 201 Lynden, Washington 98264 Ph (360) 354-3687 Fax (360) 354-0407	CITY OF FERNDALE 2095 MAIN ST FERNDALE, WA 98248	EATON, SOMERSET, WILLARD AND WASHINGTON SEWER PROJECT PROPOSED SANITARY SEWER ALTERNATE A1	JOB# / DWG 11007 SP1 SCALE H:1"=20' V:1"=2' DATE 9-7-11 SHEET 13 of 15								
<table border="1" style="width: 100%;"> <thead> <tr> <th>NO.</th> <th>DATE</th> <th>REVISION</th> <th>BY</th> </tr> </thead> <tbody> <tr> <td> </td> <td> </td> <td> </td> <td> </td> </tr> </tbody> </table>		NO.	DATE	REVISION	BY							
NO.	DATE	REVISION	BY									

P:\Projects\11007\dwg\DET.dwg, DET, 9/7/2011 5:27:01 PM



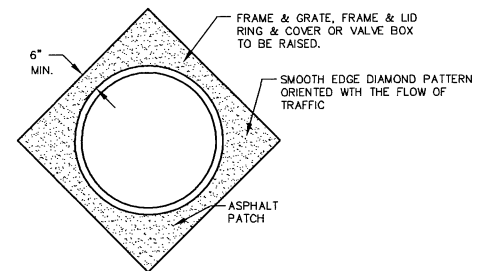
**TYPICAL TRENCH SECTION
ASPHALT CONCRETE PAVEMENT**

NTS



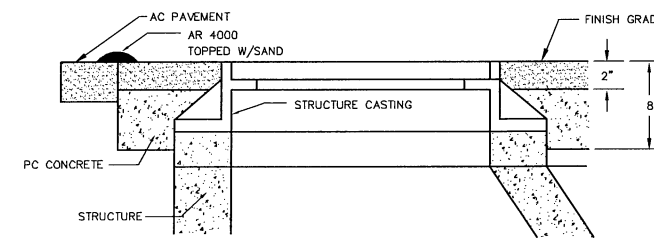
**TYPICAL TRENCH SECTION
GRAVEL ROADWAY**

NTS



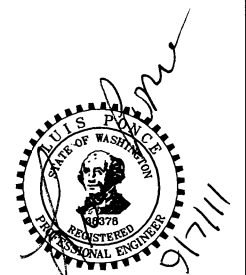
NOTES:

- ALL FRAMES, COVERS AND VALVE BOXES SHALL BE ADJUSTED TO FINISHED GRADE AFTER THE FINAL LIFT OF PAVING HAS BEEN COMPLETED. THE FOLLOWING PROCEDURE SHALL BE USED:
1. CUT THE ASPHALT IN A DIAMOND AROUND THE STRUCTURE CASTING TO BE ADJUSTED.
 2. REMOVE THE FILL MATERIAL WITHIN THE CUT PAVEMENT AREA TO 8 INCHES MIN. BELOW FINISH GRADE.
 3. PLACE THE CASTING AT FINISH GRADE.
 4. PLACE PORTLAND CEMENT CONCRETE TO WITHIN THE TOP 2 INCHES OF FINISH GRADE.
 5. APPLY TACK TO THE STRUCTURE CASTING, CUT PAVEMENT, AND PC CONCRETE.
 6. PLACE AND COMPACT 2 INCHES OF COMMERCIAL HMA TO FINISH GRADE.
 7. SEAL PAVEMENT JOINTS WITH HOT AR4000 AND TOP WITH SAND.



**ADJUSTING CASTINGS
TO FINISHED GRADE**

NTS



DESIGNED BY
LP
DRAWN BY
LMC
CHECKED BY
LP



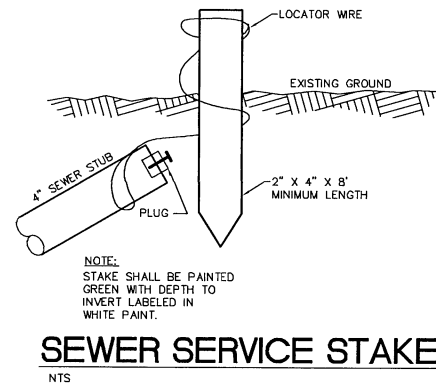
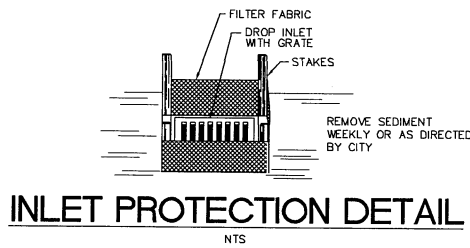
REICHHARDT & EBE
ENGINEERING, INC.
CONSULTING ENGINEERS
PO Box 978 423 Front St., Ste 201 Ph (360) 354-3687
Lynden, Washington 98264 Fax (360) 354-0407

NO.	DATE	REVISION	BY

CITY OF FERNDALE
2095 MIAN STREET
FERNDALE, WA 98248

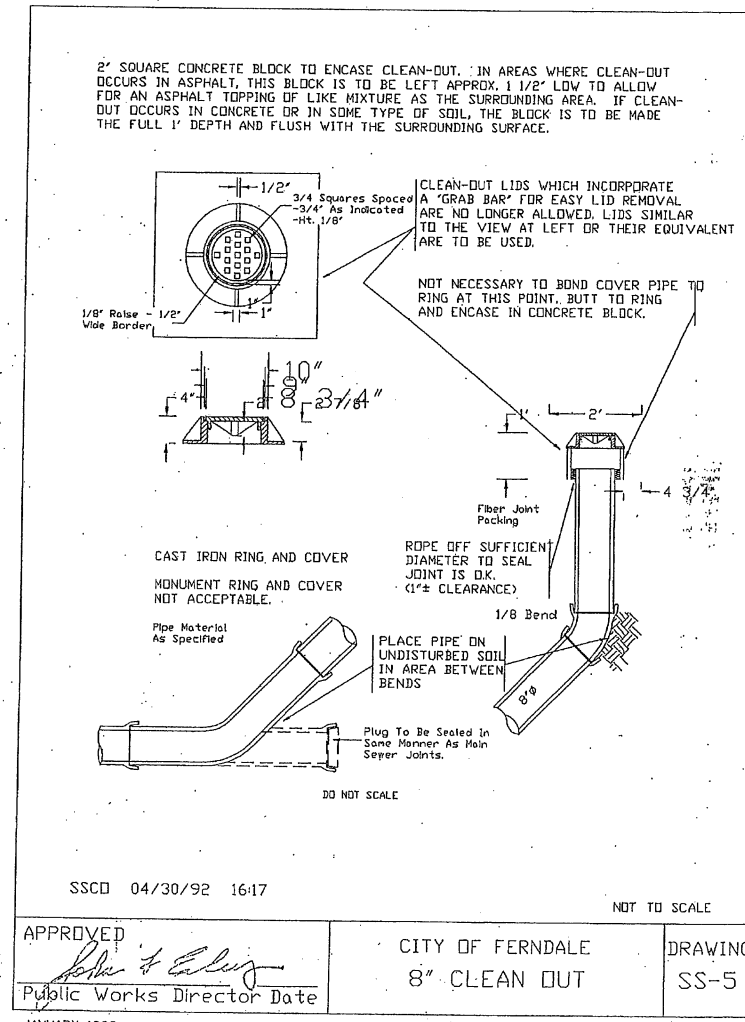
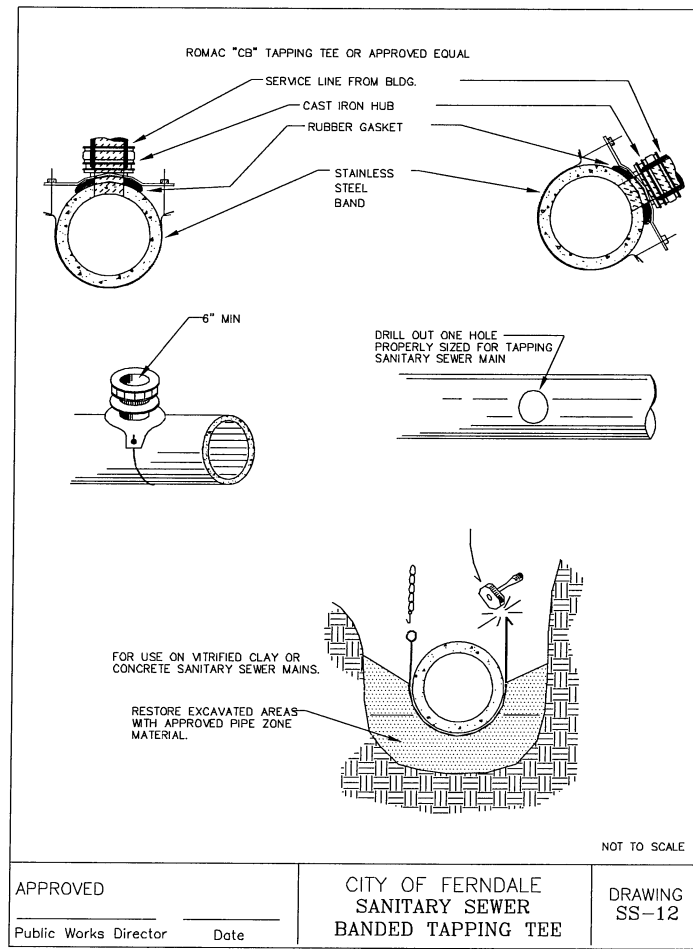
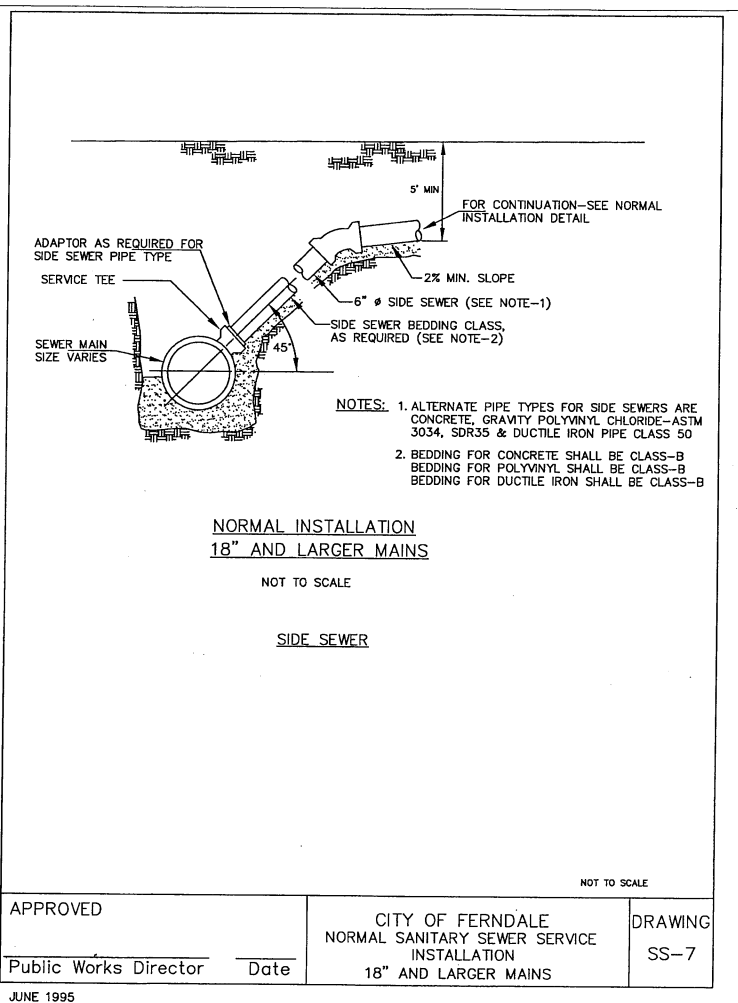
**EATON, SOMERSET, WILLARD AND
WASHINGTON SEWER PROJECT**
DETAIL SHEET

JOB# / DWG 11007	DET	DATE 9-7-11
SCALE h:n/a v:n/a	SHEET 14 of 15	



GENERAL EROSION CONTROL NOTES

1. ALL WORK AND MATERIALS SHALL BE IN ACCORDANCE WITH THE CONTRACT DOCUMENTS.
2. ALL CUT AND FILL SLOPES SHALL BE SEEDED AND FERTILIZED FOR EROSION CONTROL. CONTRACTOR SHALL BE RESPONSIBLE FOR SLOPE EROSION UNTIL VEGETATION IS FIRMLY ESTABLISHED.
3. CONTRACTOR SHALL INFORM THE ENGINEER AND OBTAIN APPROVAL FROM THE ENGINEER OF ANY PROPOSED CHANGES IN PLAN PRIOR TO CONSTRUCTION OF THAT CHANGE. CONTRACTOR SHALL KEEP RECORD OF DEVIATIONS AND FORWARD TO THE ENGINEER.
4. CONTRACTOR WILL HAVE A WATER TRUCK AVAILABLE ON SITE AT ALL TIMES. CONTRACTOR WILL WATER SURFACES OFTEN ENOUGH TO ABATE DUST AS APPROVED BY THE ENGINEER. WATERING WILL INCLUDE WEEKENDS AND HOLIDAYS.
5. THE CONTRACTOR SHALL BE RESPONSIBLE FOR IMPLEMENTATION OF THE SEDIMENTATION AND EROSION CONTROL MEASURES AS SHOWN.
6. THE CONSTRUCTED EROSION CONTROL AND SEDIMENTATION PLAN SHALL BE APPROVED BY THE ENGINEER PRIOR TO PERFORMING ANY SITE GRADING OR CLEARING.
7. MAINTENANCE AND OPERATION OF THE EROSION CONTROL AND SEDIMENTATION SYSTEM SHALL BE THE RESPONSIBILITY OF THE CONTRACTOR. THE CONTRACTOR SHALL BE RESPONSIBLE FOR IMPLEMENTATION OF THE SEDIMENTATION AND EROSION CONTROL MEASURES.
8. ANY VEGETATION NOT IN THE CONSTRUCTION AREA SHALL BE LEFT UNDISTURBED.
9. ALL CLEARING LIMITS SHALL BE VISIBLY MARKED PRIOR TO CLEARING.
10. ALL STORM DRAIN FACILITIES WITHIN THE PROJECT BOUNDARY, OR WHICH ARE IMPACTED BY THE PROJECT ARE TO BE CLEARED OF SEDIMENT AND DEBRIS PRIOR TO FINAL ACCEPTANCE OF THE PROJECT.
11. THIS PLAN REPRESENTS THE MINIMUM REQUIREMENTS FOR THIS PROJECT. ADDITIONAL EROSION CONTROL MAY BE REQUIRED BY THE ENGINEER AS ARE FOUND NECESSARY.
12. THE TEMPORARY EROSION CONTROL SYSTEMS SHALL BE INSTALLED PRIOR TO ALL OTHER SITE CONSTRUCTION.
13. REFERENCE WSDOT STANDARD SPECIFICATIONS FOR ROAD, BRIDGE & MUNICIPAL CONSTRUCTION, 2008 FOR STREET SWEEPING REQUIREMENTS.



DESIGNED BY LP
DRAWN BY LMC
CHECKED BY LP

REICHHARDT & EBE
ENGINEERING, INC.
CONSULTING ENGINEERS
PO Box 978 423 Front St., Ste 201 Ph (360) 354-3687
Lynden, Washington 98264 Fax (360) 354-0407

NO.	DATE	REVISION	BY

CITY OF FERNDAL
2095 MIAN STREET
FERNDAL, WA 98248

EATON, SOMERSET, WILLARD AND
WASHINGTON SEWER PROJECT
DETAIL SHEET

JOB# / DWG	11007	DET	DATE	9-7-11
SCALE	n/a	v/a	SHEET	15 of 15