



**Reichhardt & Ebe**  
ENGINEERING INC

TRANSMITTAL SHEET

Date sent: Monday, May 11, 2015  
Sent to: All Planholders  
Deliver to: Project Estimator  
Transmission sent from: Reichhardt & Ebe Engineering

**CONFIRMATION OF RECEIPT OF ADDENDUM**

**PROJECT: BROWN ROAD CULVERT REPLACEMENT PROJECT  
PROJECT # SW2014-03**

---

Please complete the following form and fax or email back to Reichhardt & Ebe Engineering, Inc. 360-354-0407 or [officeadmin@recivil.com](mailto:officeadmin@recivil.com) as soon as possible.

Have you received Addendum No. 1 for the above-mentioned project?

**YES, we received Addendum No. 1**

Signed: \_\_\_\_\_ Dated: \_\_\_\_\_

Company name (Please Print): \_\_\_\_\_

Please fax back to Reichhardt & Ebe Engineering, Inc. at 360-354-0407 or email back to [officeadmin@recivil.com](mailto:officeadmin@recivil.com)



**Reichhardt & Ebe**  
ENGINEERING INC

**TRANSMITTAL SHEET**

TO: ALL BIDDERS	FROM: Luis Ponce, P.E.
COMPANY:	DATE: May 11, 2015
ADDRESS:	TOTAL NO. OF PAGES INCLUDING COVER: 4
RE: City of Ferndale Addendum 1 BROWN ROAD CULVERT REPLACEMENT PROJECT PROJECT # SW2014-03	

NOTES/COMMENTS:

**To the attention of all bidders for the above project:**

Please find the enclosed Addendum for the above referenced project.

The enclosed ADDENDUM is to be considered as much a part of the Contract Documents as if it were included in the body of the plans and specifications, and will be incorporated in and made a part of the contract when awarded and when formally executed.

The Bidder shall acknowledge in writing, on the bid form, this addendum in order to have the bid considered.

Luis Ponce, P.E.



**ADDENDUM NO. 1**  
**To the Contract Provisions for**  
**CITY OF FERNDALE, WASHINGTON**

**BROWN ROAD CULVERT REPLACEMENT PROJECT**  
**PROJECT #SW2014-03**

**ITEM 1**

**Plan Sheet 4**

Stationing along the plan view centerline has been added.

**ITEM 2**

**Plan Sheet 6**

It is anticipated that the culvert and the retaining walls are two separate units. The attached Plan Sheet shows the two as separate structures.

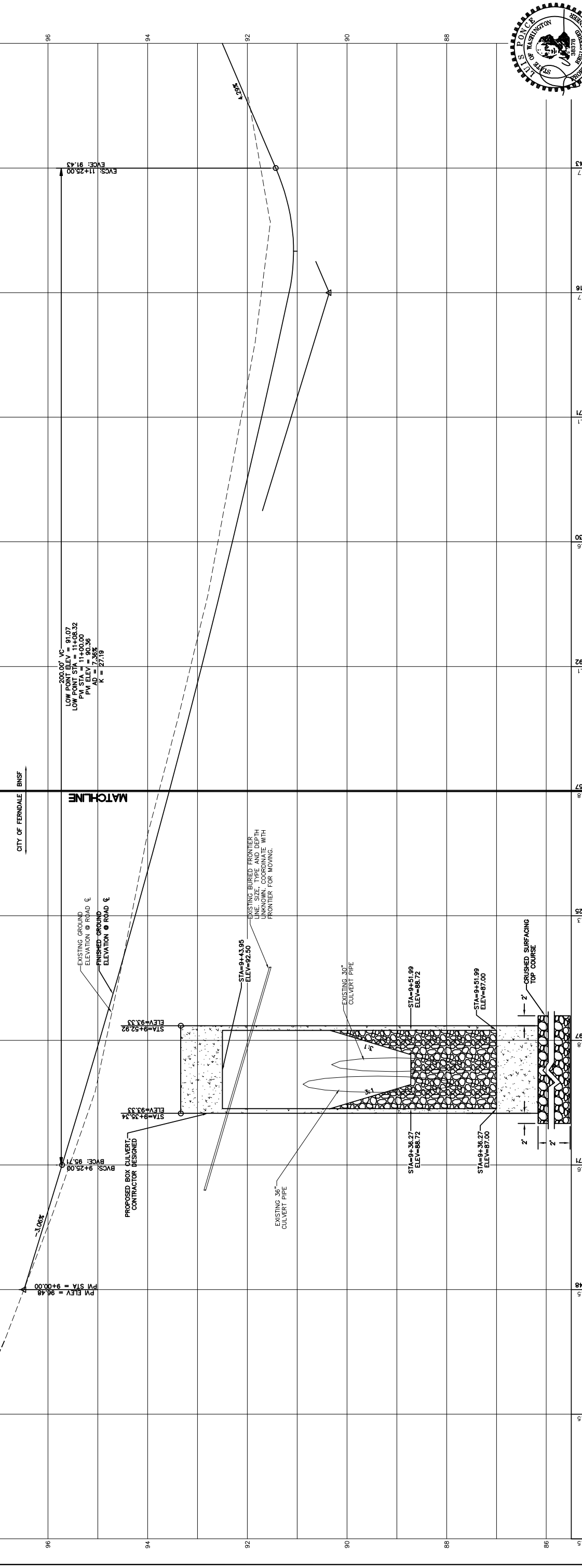
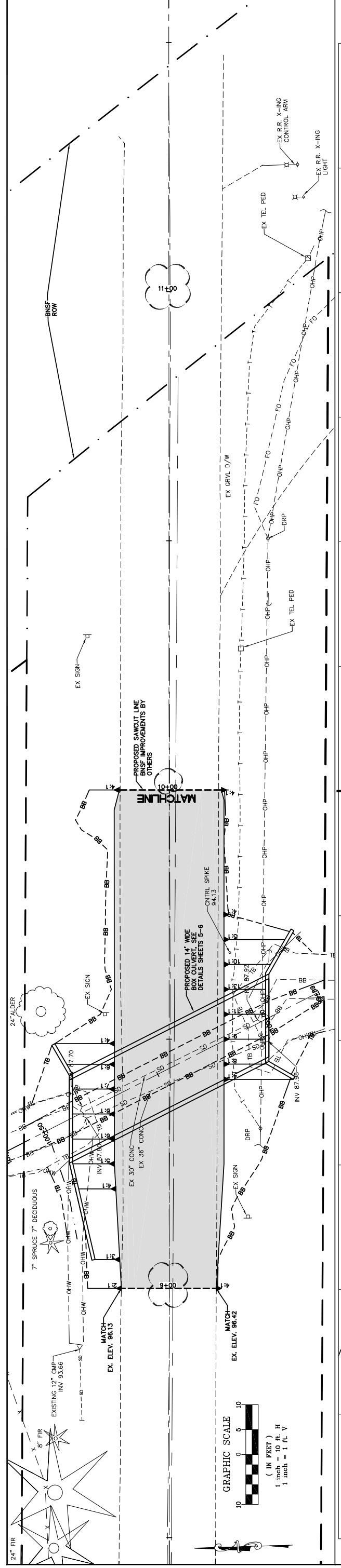
The finished grade of the slope at the back of the structures has been added.

**ITEM 3**

**1-05.14 Cooperation with Other Contractors**

Section 1-05.14 is supplemented with the following:

The BNSF Contractor's work is not scheduled to begin until July 15, 2015.



ELEVATION	98.50	98.00	97.50	96.48	96.47	94.8	94.8	94.3	94.25	93.8	93.57	93.1	92.92	92.6	92.30	92.1	91.7	91.6	91.7	91.43
EXISTING GROUND ELEVATION @ ROAD																				
FINISHED GROUND ELEVATION @ ROAD																				
PROPOSED BOX CULVERT CONTRACTOR DESIGNED																				
EXISTING BURIED FRONTIER LINE, SIZE, TYPE AND DEPTH UNKNOWN. COORDINATE WITH FRONTIER FOR MOVING.																				
EXISTING 36" CULVERT PIPE																				
EXISTING 30" CULVERT PIPE																				
CRUSHED SURFACING TOP COURSE																				

200.00' VS.  
 LOW POINT ELEV = 91.07  
 LOW POINT STA = 11+08.32  
 PVI STA = 11+00.00  
 GRADE ELEV = 91.41  
 GROUND ELEV = 91.36  
 K = 27.19

STA=94+36.27 ELEV=88.72  
 STA=94+51.99 ELEV=87.00

STA=94+36.27 ELEV=88.72  
 STA=94+51.99 ELEV=87.00

STA=94+36.27 ELEV=88.72  
 STA=94+51.99 ELEV=87.00

STA=94+36.27 ELEV=88.72  
 STA=94+51.99 ELEV=87.00

STA=94+36.27 ELEV=88.72  
 STA=94+51.99 ELEV=87.00

STA=94+36.27 ELEV=88.72  
 STA=94+51.99 ELEV=87.00

STA=94+36.27 ELEV=88.72  
 STA=94+51.99 ELEV=87.00

STA=94+36.27 ELEV=88.72  
 STA=94+51.99 ELEV=87.00

STA=94+36.27 ELEV=88.72  
 STA=94+51.99 ELEV=87.00

STA=94+36.27 ELEV=88.72  
 STA=94+51.99 ELEV=87.00

STA=94+36.27 ELEV=88.72  
 STA=94+51.99 ELEV=87.00

STA=94+36.27 ELEV=88.72  
 STA=94+51.99 ELEV=87.00

STA=94+36.27 ELEV=88.72  
 STA=94+51.99 ELEV=87.00

STA=94+36.27 ELEV=88.72  
 STA=94+51.99 ELEV=87.00

STA=94+36.27 ELEV=88.72  
 STA=94+51.99 ELEV=87.00

STA=94+36.27 ELEV=88.72  
 STA=94+51.99 ELEV=87.00

STA=94+36.27 ELEV=88.72  
 STA=94+51.99 ELEV=87.00

STA=94+36.27 ELEV=88.72  
 STA=94+51.99 ELEV=87.00

STA=94+36.27 ELEV=88.72  
 STA=94+51.99 ELEV=87.00

STA=94+36.27 ELEV=88.72  
 STA=94+51.99 ELEV=87.00

STA=94+36.27 ELEV=88.72  
 STA=94+51.99 ELEV=87.00

STA=94+36.27 ELEV=88.72  
 STA=94+51.99 ELEV=87.00

STA=94+36.27 ELEV=88.72  
 STA=94+51.99 ELEV=87.00



**BID SET**

DESIGNED BY: ARS  
 DRAWN BY: ARS  
 CHECKED BY: LP

REICHARDT & EBE  
 ENGINEERING INC  
 P.O. Box 978 / 423 Front Street, Lynden, WA 98264 (360) 354-3687  
 813 Metcalf Street, Sedro-Woolley, WA 98284 (360) 855-1713

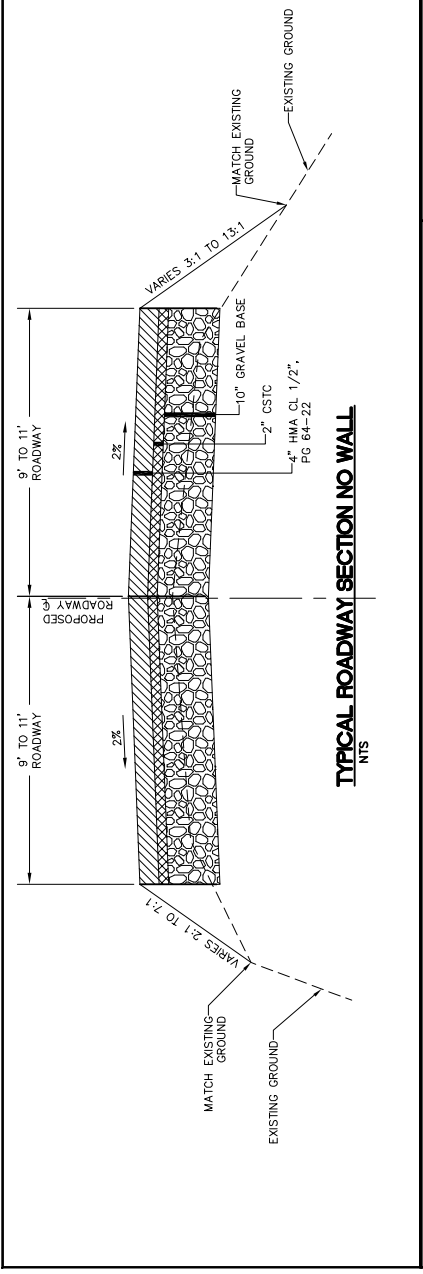
NO. 1 DATE 5/8/15 ADDENDUM - 1

BY: LP

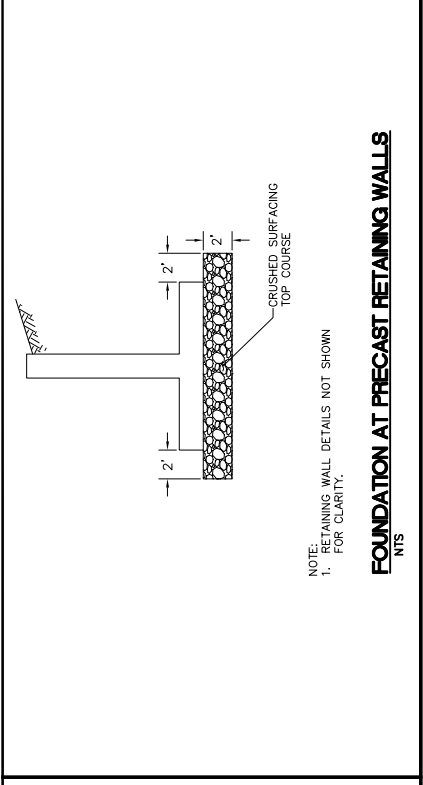
CITY OF FERNDALE  
 2095 MAIN STREET  
 FERNDALE, WA 98248

BROWN ROAD  
 CULVERT REPLACEMENT PROJECT  
 PLAN AND PROFILE

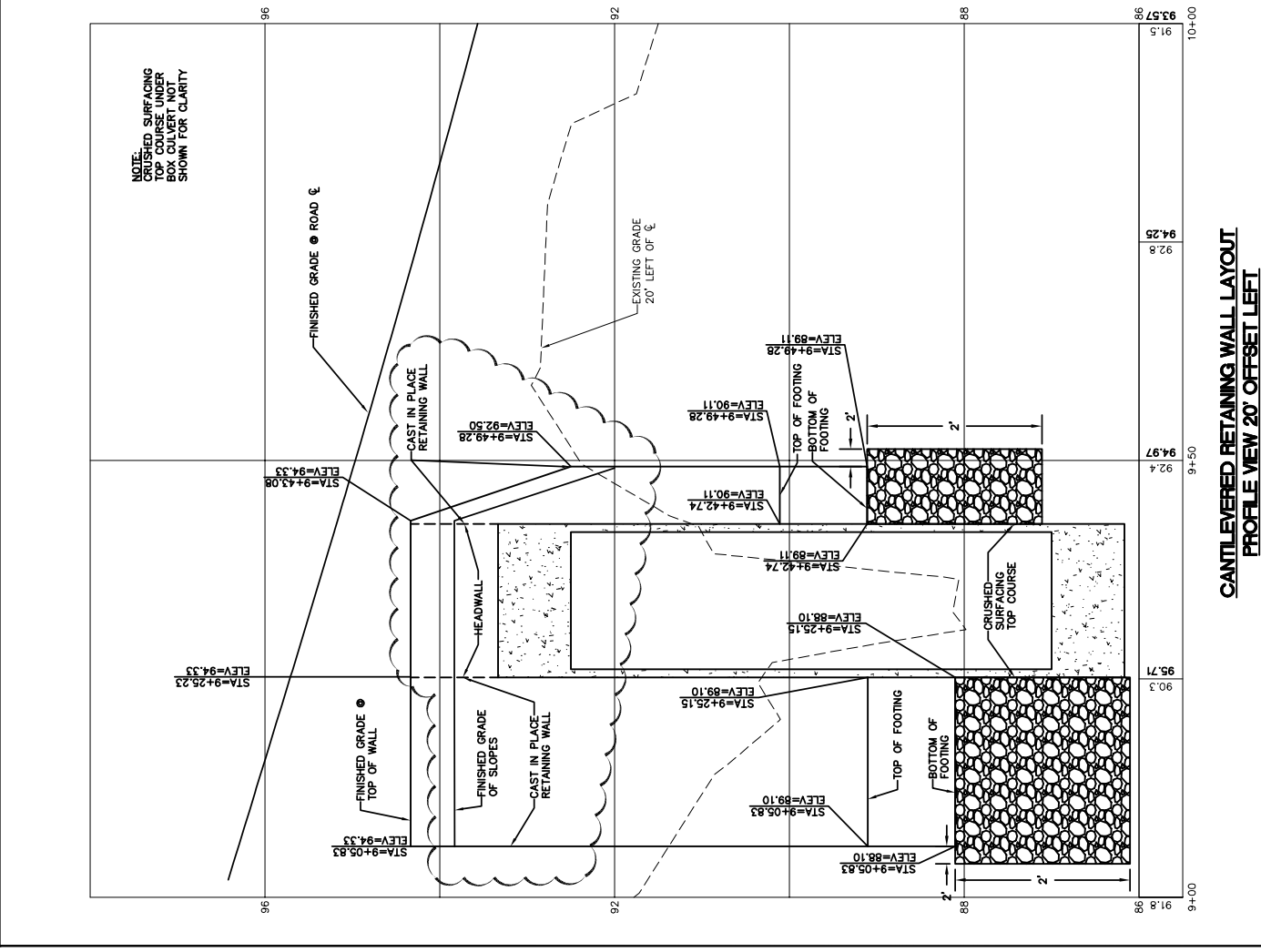
DWG 14035 Base Map  
 JOB# 14035  
 SCALE H: 1"=10' V: 1"=1'  
 SHEET 4 of 6  
 DATE 5/8/15



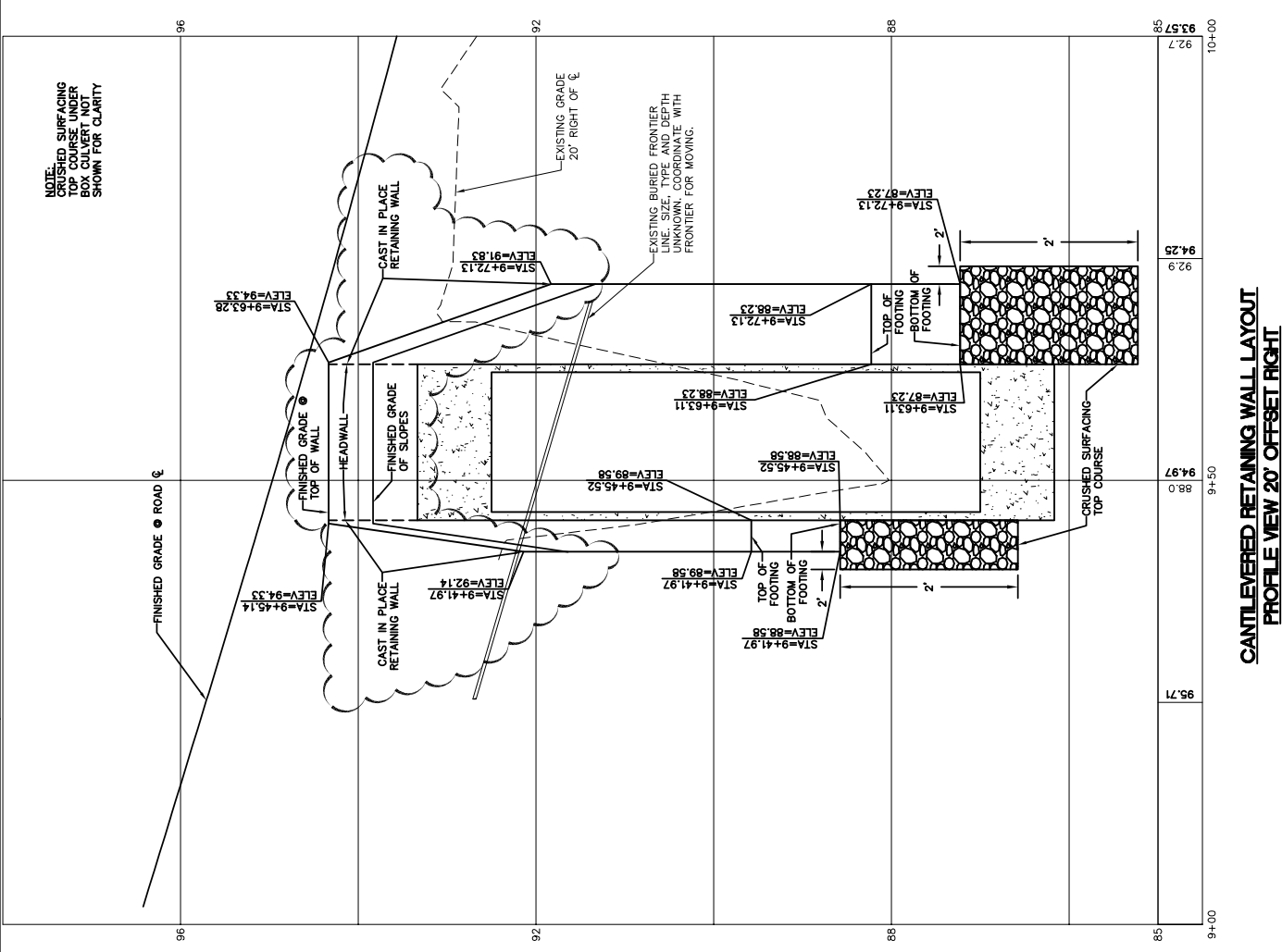
TYPICAL ROADWAY SECTION NO WALL  
NTS



FOUNDATION AT PRECAST RETAINING WALLS  
NTS



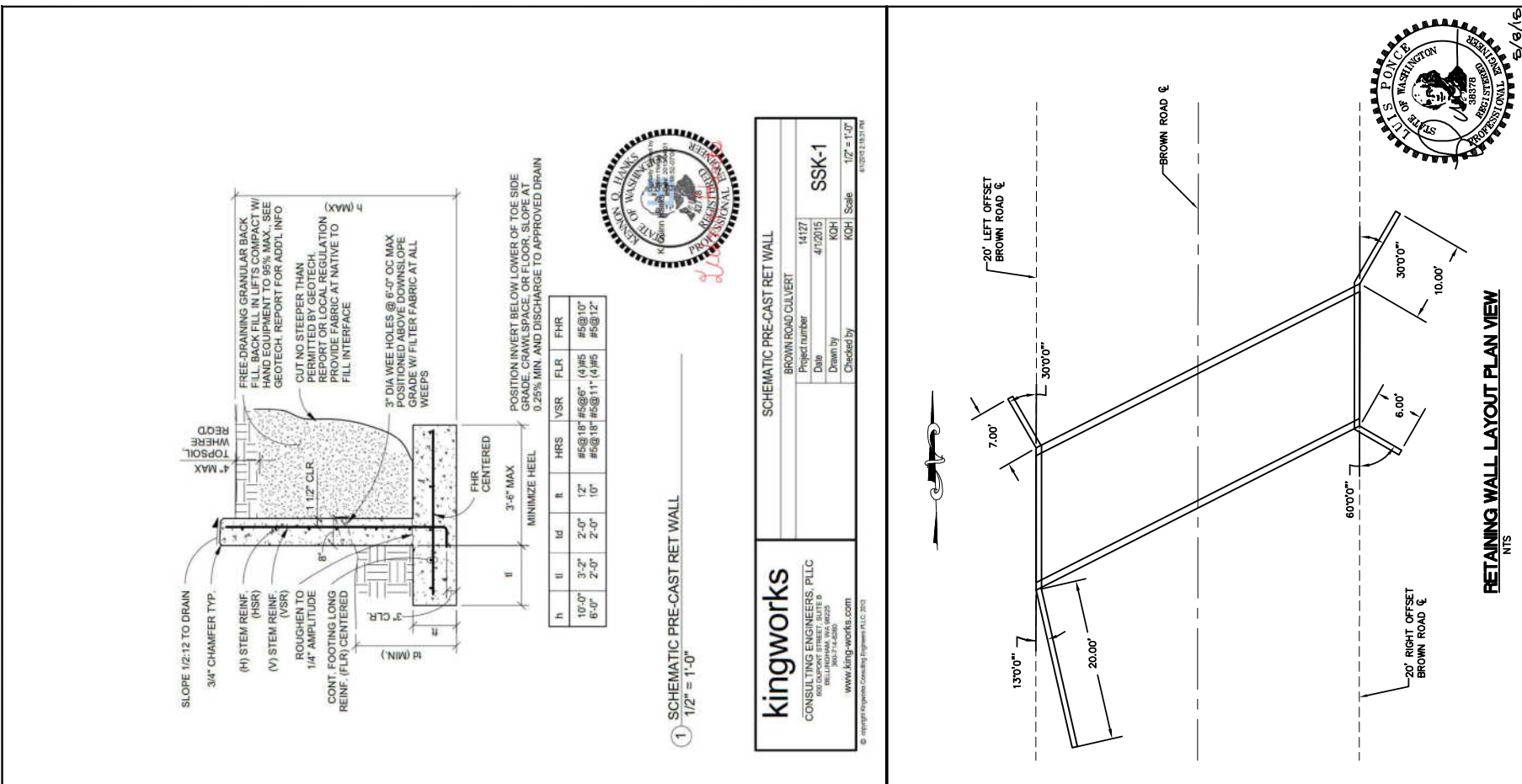
CANTILEVERED RETAINING WALL LAYOUT  
PROFILE VIEW 20' OFFSET LEFT



CANTILEVERED RETAINING WALL LAYOUT  
PROFILE VIEW 20' OFFSET RIGHT

**kingworks**  
CONSULTING ENGINEERS, PLLC  
600 DOWNEY STREET, SUITE 200  
FERNDALE, WA 98248  
PH: 360-274-2000  
WWW.KINGWORKS.COM

**SSK-1**  
Project number: 14127  
Date: 4/17/2015  
Drawn by: KOH  
Checked by: KOH  
Scale: 1/2\"/>



RETAINING WALL LAYOUT PLAN VIEW  
NTS

<b>BID SET</b>	DESIGNED BY: ARS	DATE: 5/8/15	DWG: 14035 Base Map	DATE: 5/8/15
	DRAWN BY: ARS	SCALE: H: N/A	JOB#: 14035	SHEET: 6
	CHECKED BY: LP	SCALE: V: N/A	PROJECT: BROWN ROAD CULVERT REPLACEMENT PROJECT DETAILS AND TYPICAL SECTIONS	SHEET: 6 of 6
<b>Reichhardt &amp; Ebe</b> ENGINEERING INC P.O. Box 978 / 423 Front Street, Lynden, WA 98264 (360) 354-3687 813 Metcalf Street, Sedro-Woolley, WA 98284 (360) 855-1713		CITY OF FERDALE 2085 MAIN STREET FERDALE, WA 98248		