

FERNDALE LIBRARY

15,000 SF Library

COMMUNITY

- Encourage use: inviting to public
- Lively, pedestrian-friendly
- Improve Main Street context
- Recognizably public building
- Provide public outdoor space
- Connect to civic campus and downtown

SUSTAINABILITY

- Minimize impact on existing wetland
- Optimize building orientation
- Utilize local materials and building techniques
- Infiltrate stormwater

SITE

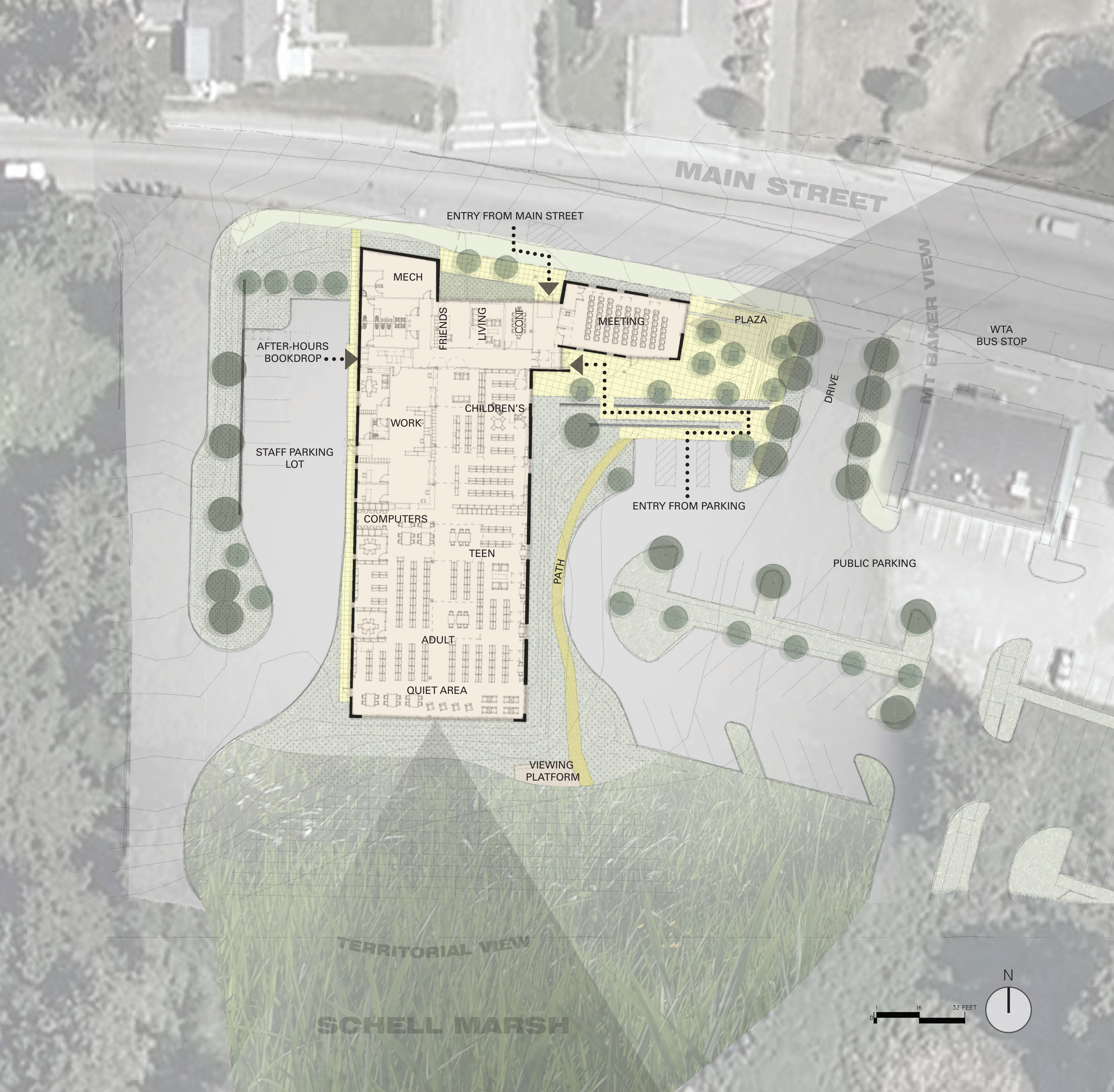
- Optimize view to Mt. Baker
- Connect marsh and Main Street

BUILDING

- Thermally efficient envelope and systems
- Design for future flexibility and expansion
- Integrate natural light and ventilation

ECONOMIC

- Cost effective to construct
- Durable and easy to maintain
- Energy efficient operation
- Reduce, reuse, and recycle materials





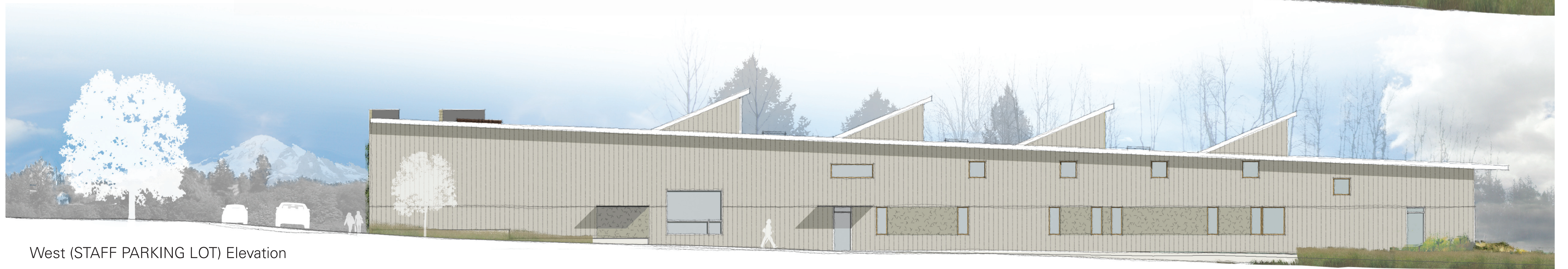
North (MAIN STREET) Elevation



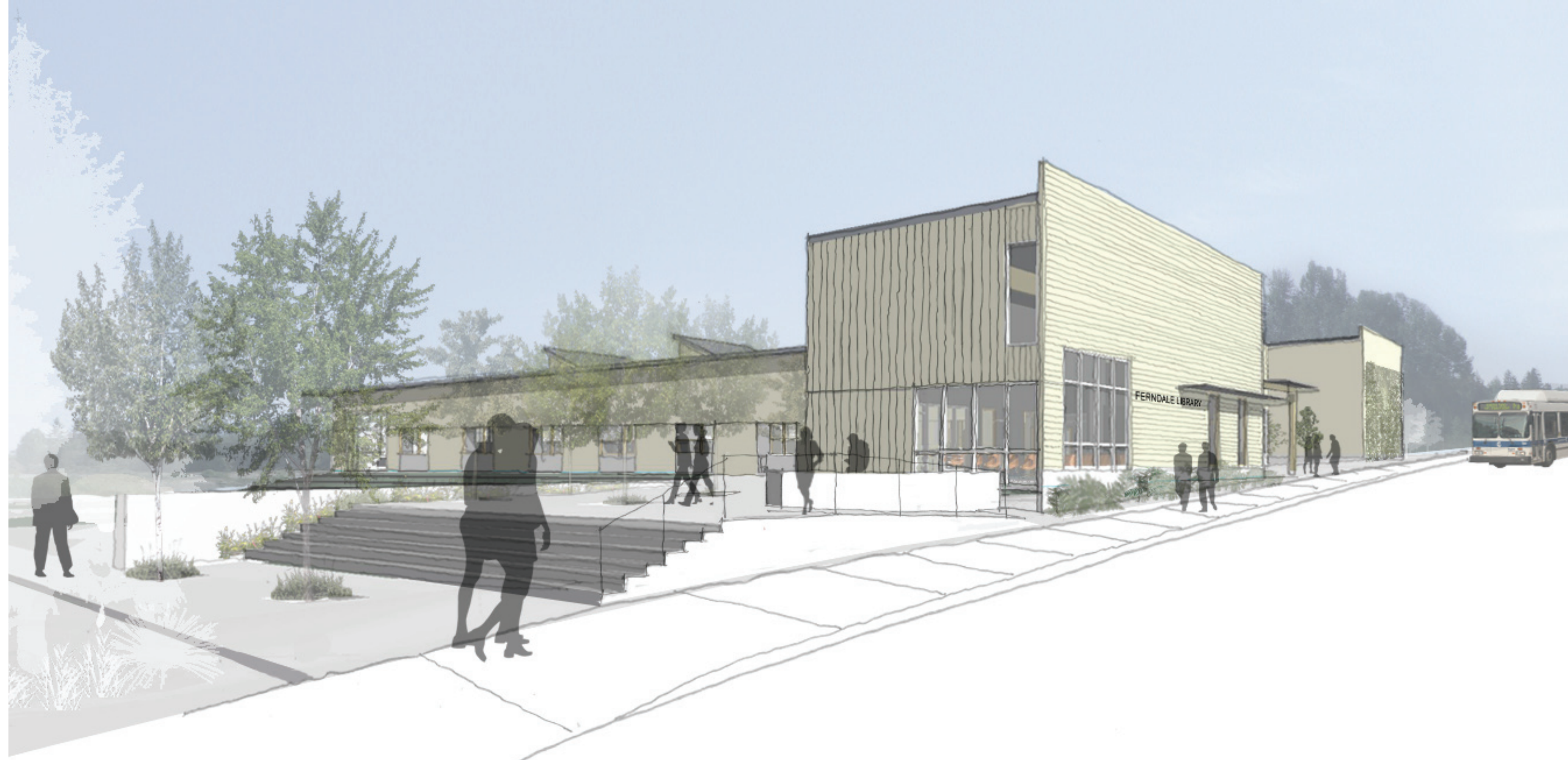
East (PUBLIC PARKING LOT) Elevation



South (WETLANDS) Elevation



West (STAFF PARKING LOT) Elevation



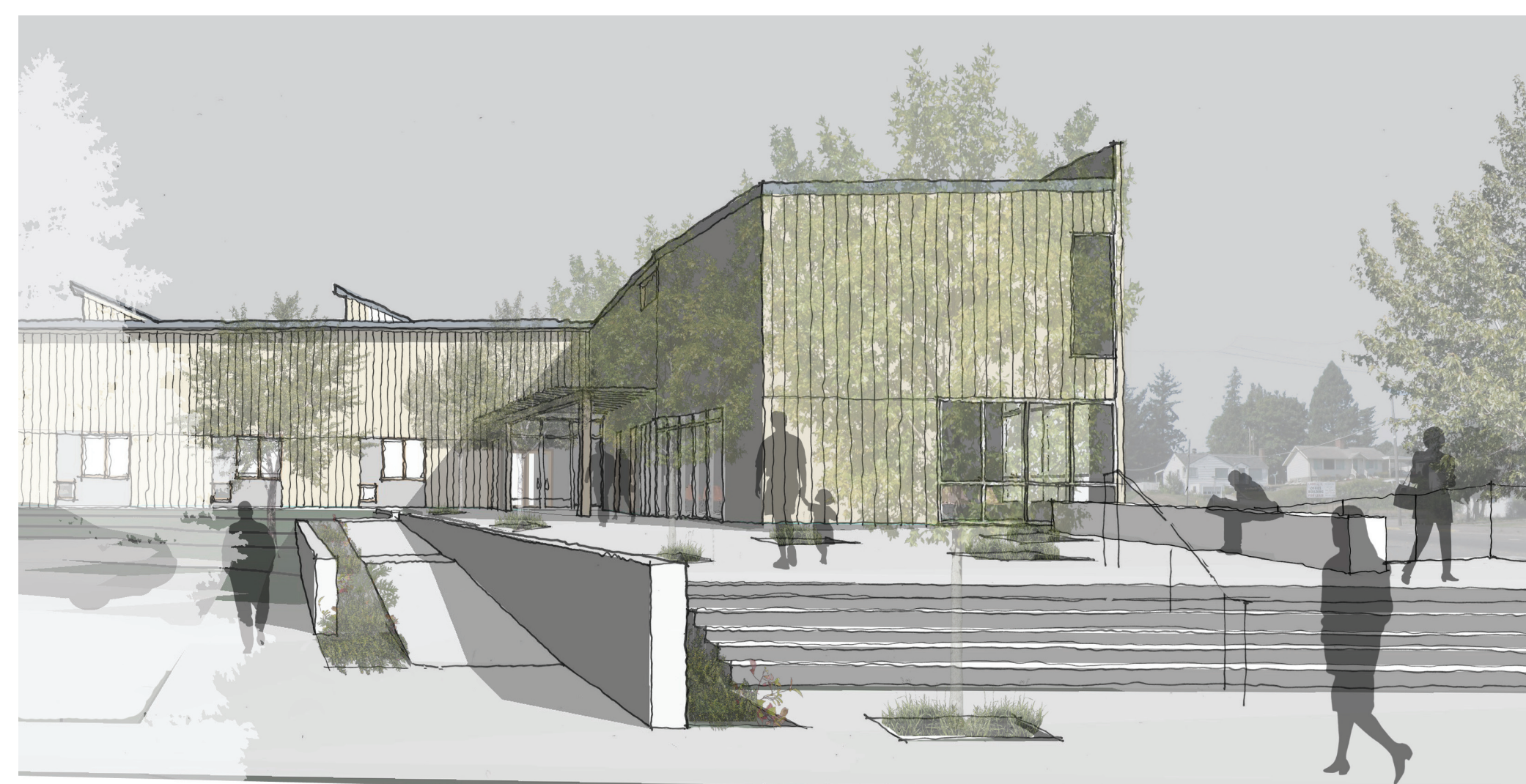
PUBLIC PLAZA AND COMMUNITY MEETING ROOM
Perspective Looking Southwest



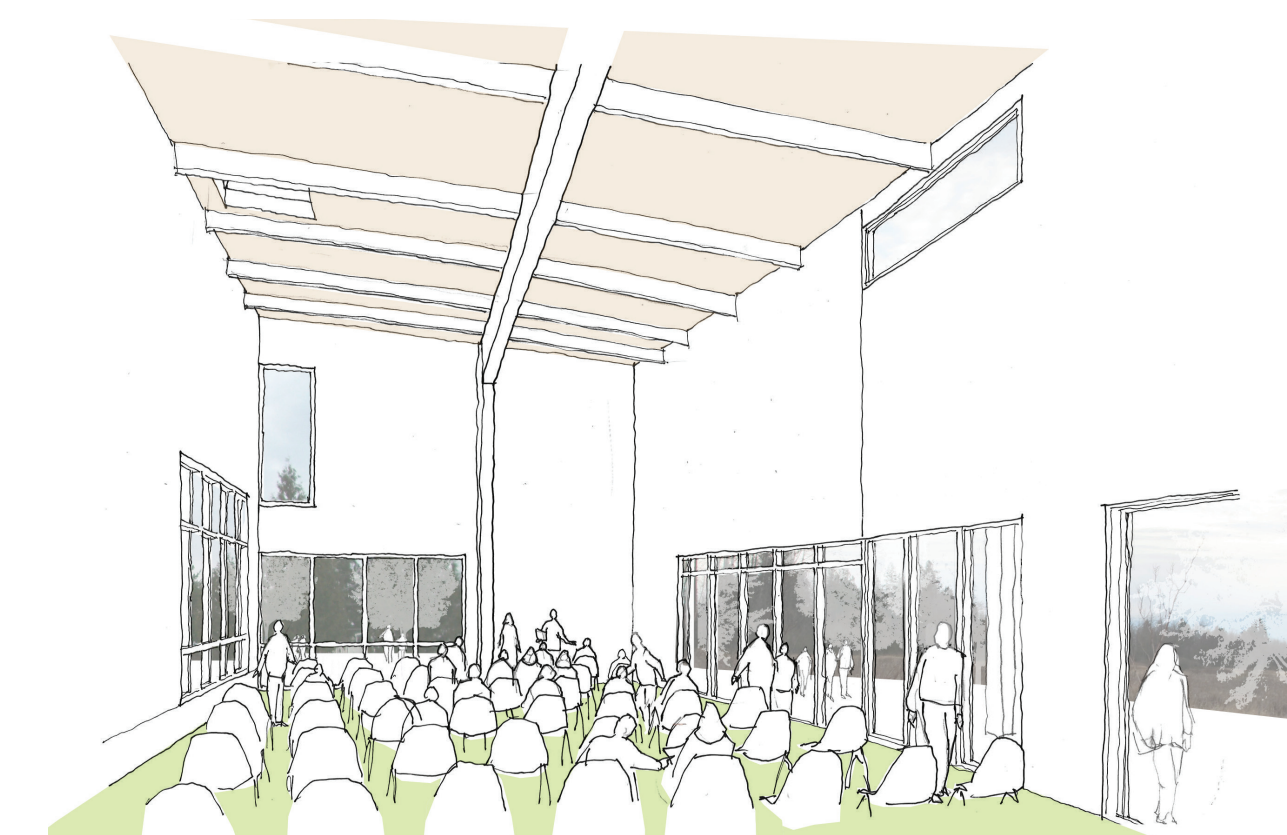
QUIET READING AREA WITH WETLAND VIEW
Perspective Looking East



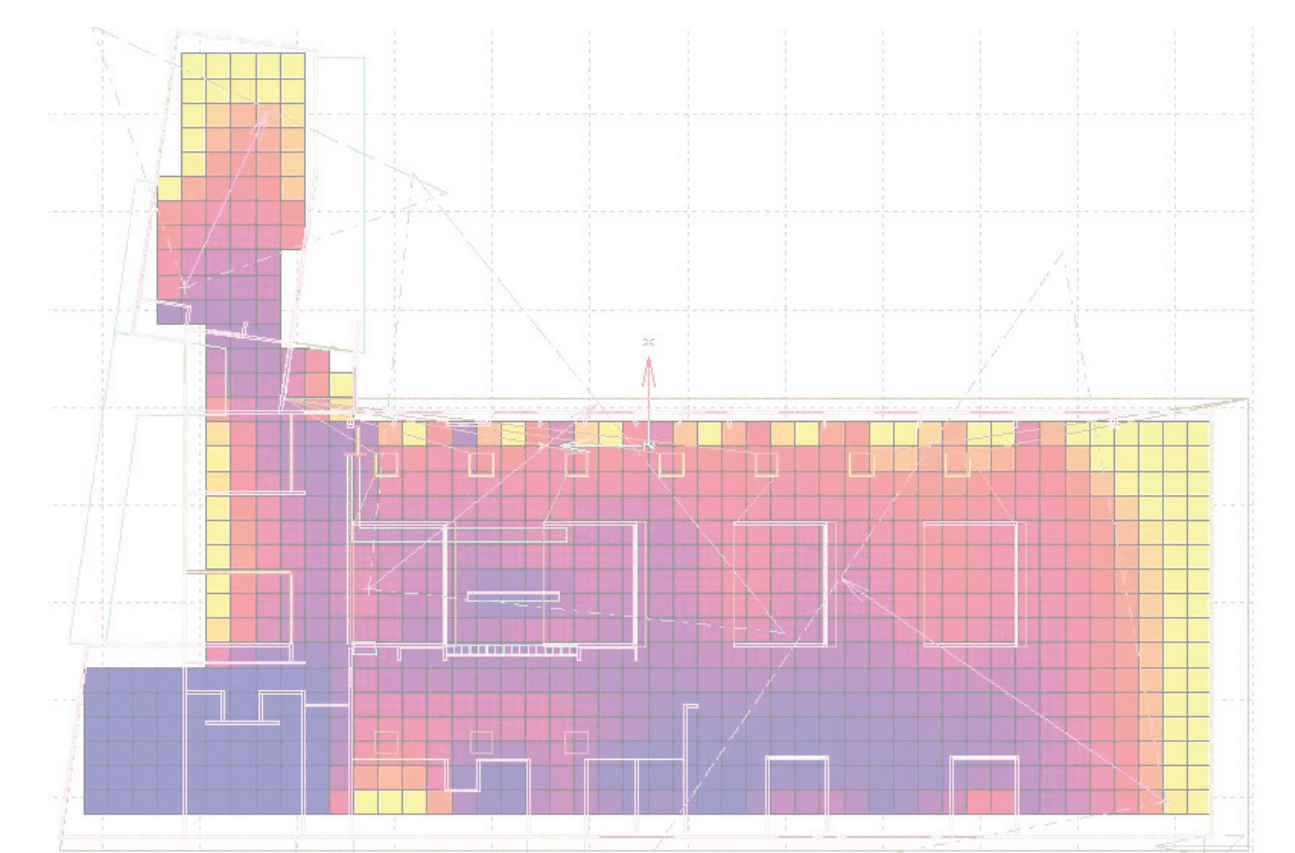
LIBRARY ENTRY FROM MAIN STREET
Perspective Looking Southeast



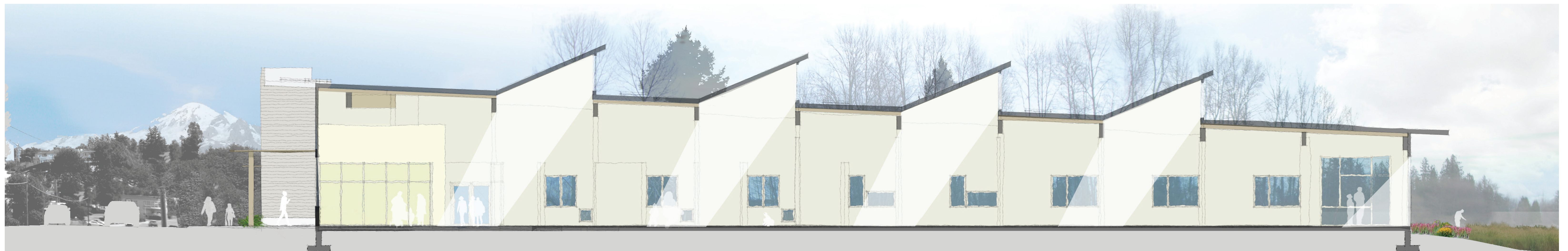
LIBRARY ENTRY FROM PARKING
Perspective Looking West



COMMUNITY MEETING ROOM
Perspective Looking East



DAYLIGHTING ANALYSIS
Plan



Longitudinal Section - Looking East