

REICHHARDT & EBE ENGINEERING, INC.
CONSULTING ENGINEERS

TRANSMITTAL

Date sent: Monday, September 26, 2011
Sent to: All Planholders
Deliver to: Project Estimator
Transmission sent from: Reichhardt & Ebe Engineering
Number of pages including this page: 13

CONFIRMATION OF RECEIPT OF ADDENDUM

PROJECT: Eaton, Somerset, Willard, and Washington Sewer
Projects, City of Ferndale

**Please complete the following form and fax or email back
to Reichhardt & Ebe Engineering, Inc. 360-354-0407 or
sheutink@recivil.com as soon as possible.**

**Have you received Addendum No. 1 for the above-mentioned
project?**

☐ **YES, we received Addendum No. 2**

Signed: _____ **Dated:** _____

Company name (Please Print): _____

**Please fax back to Reichhardt & Ebe Engineering, Inc. at 360-354-
0407 or email back to sheutink@recivil.com**

REICHHARDT & EBE ENGINEERING, INC.
CONSULTING ENGINEERS

TRANSMITTAL

TO: ALL BIDDERS	FROM: Luis Ponce, P.E.
COMPANY:	DATE: 9/26/11
FAX NUMBER:	TOTAL NO. OF PAGES INCLUDING COVER:
PHONE NUMBER:	SENDER'S PHONE NUMBER: (360) 354-3687
RE: City of Ferndale Addendum 2	SENDER'S FAX NUMBER: (360) 354-0407

**EATON, SOMERSET, WILLARD, AND WASHINGTON SEWER
PROJECT NO. SS2011-01**

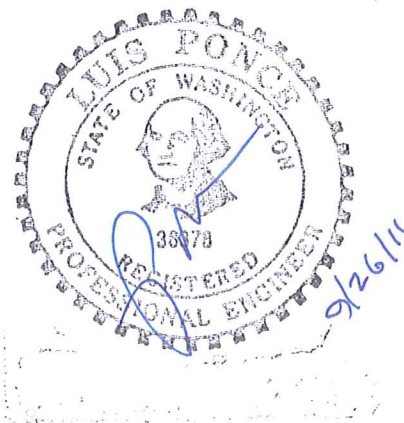
To the attention of all bidders for the above project:

Please find the enclosed Addendum No. 2 for the above referenced project.

The enclosed ADDENDUM is to be considered as much a part of the Contract Documents as if it were included in the body of the plans and specifications, and will be incorporated in and made a part of the contract when awarded and when formally executed.

The Bidder shall acknowledge in writing, on the bid form, this addendum in order to have the bid considered.


Luis Ponce, P.E.



423 FRONT STREET
LYNDEN, WASHINGTON 98264
360-354-3687

ADDENDUM NO. 2
To the Contract Provisions for
City of Ferndale, Washington

**EATON, SOMERSET, WILLARD, AND WASHINGTON SEWER
PROJECT NO. SS2011-01**

ITEM 1

Plan Sheets

The proposed sanitary sewer alignment between STA 3+00 to STA 12+79 has been shifted 2' west. The attached Plan Sheets reflect this revision. The attached Plan Sheets shall replace Addendum No. 1 Plan Sheets.

ITEM 2

Plan Sheets

The Cascade Natural Gas main sizes are as follow:

Between STA 1+50 to STA 12+79, 4" steel gas main
Between STA 20+48 to STA 25+05, 2" steel gas main
Between STA 30+50 to STA 34+75, 2" steel gas main

ITEM 3

**DIVISION 1
GENERAL REQUIREMENTS**

1-05 CONTROL OF WORK

1-05.14 Cooperation with Other Contractors

Section 1-05.14 is supplemented with the following:

Cascade Natural Gas (Gas): Utility Construction
Project Limits: Beginning of Project to the End of Project
Cascade Natural Gas (CNG) crews will be on-site during all sanitary sewer work that impacts CNG utilities. The CNG crews will adjust, rearrange, alter, or connect their equipment that is impacted by the sanitary sewer work.

ITEM 4

DIVISION 1 GENERAL REQUIREMENTS

1-07 LEGAL RELATIONS AND RESPONSIBILITIES TO THE PUBLIC

1-07.17(2) Utility Construction, Removal or Relocation by Others.

Section 1-07.17(2) is supplemented with the following:

Prior to any sanitary work commencing on-site, Cascade Natural Gas (CNG) shall replace and relocate their 2" gas main approximately 4' north of the proposed sanitary sewer main at the following locations:

Between STA 20+48 to STA 25+00

Between STA 30+48 to STA 34+75

The new 2" gas main will be steel.

ITEM 5

DIVISION 2 EARTHWORK

2-09 STRUCTURE EXCAVATION

2-09.4 Measurement

Section 2-09.4 is supplemented with the following:

The horizontal limits shall also be measured in accordance with the attached "Typical Trench Section STA 3+00 to 12+75" detail sheet.

ITEM 6

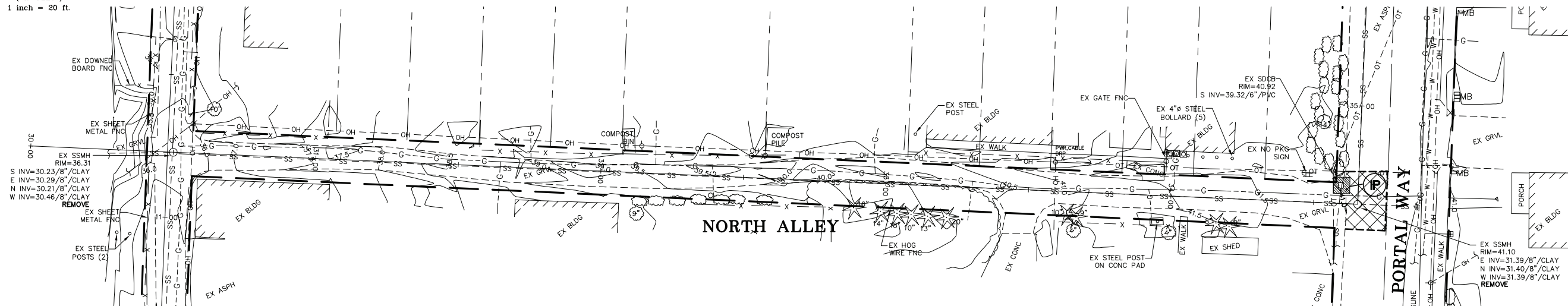
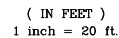
The attached additional sanitary side sewer information is provided.



POINT OF CLARIFICATION

Based on City of Ferndale's GIS areal map, the estimated number of side sewers is 40 for the Base Bid and 15 for Alternate A1.



DESIGNED BY LP	 <div>REICHARDT & EBE <i>ENGINEERING, INC.</i> CONSULTING ENGINEERS PO Box 978 423 Front St., Ste 201 Ph (360) 354-3687 Lynden, Washington 98264 Fax (360) 354-0407</div>	1	9-26-11	REVISE PROP SS ALIGNMENT - ADDENDUM 2	LP	CITY OF FERNDAL 2095 MAIN ST FERNDAL, WA 98248	EATON, SOMERSET, WILLARD AND WASHINGTON SEWER PROJECT EXISTING CONDITIONS, TESC AND DEMO PLAN	JOB# / DWG	DATE
DRAWN BY LMC		9-19-11	ADDENDUM 1	LP	11007.1 AD1 SP2			9-26-11	
CHECKED BY LP		NO.	DATE	REVISION	BY			SCALE	SHEET
								H:1"=20' V:n/a	3 of 12



  = INLET PROTECTION



DESIGNED BY	LP
DRAWN BY	LMC
CHECKED BY	LP



REICHHARDT & EBE
ENGINEERING, INC.

PO Box 978 423 Front St., Ste 201 Ph (360) 354-3687
Lynden, Washington 98264 Fax (360) 354-0407

1

9-26-11	
9-19-11	
DATE	

REVISE PROP SS ALIGNMENT – ADDENDUM 2
ADDENDUM 1

REVISION

LP	
LP	
	BY

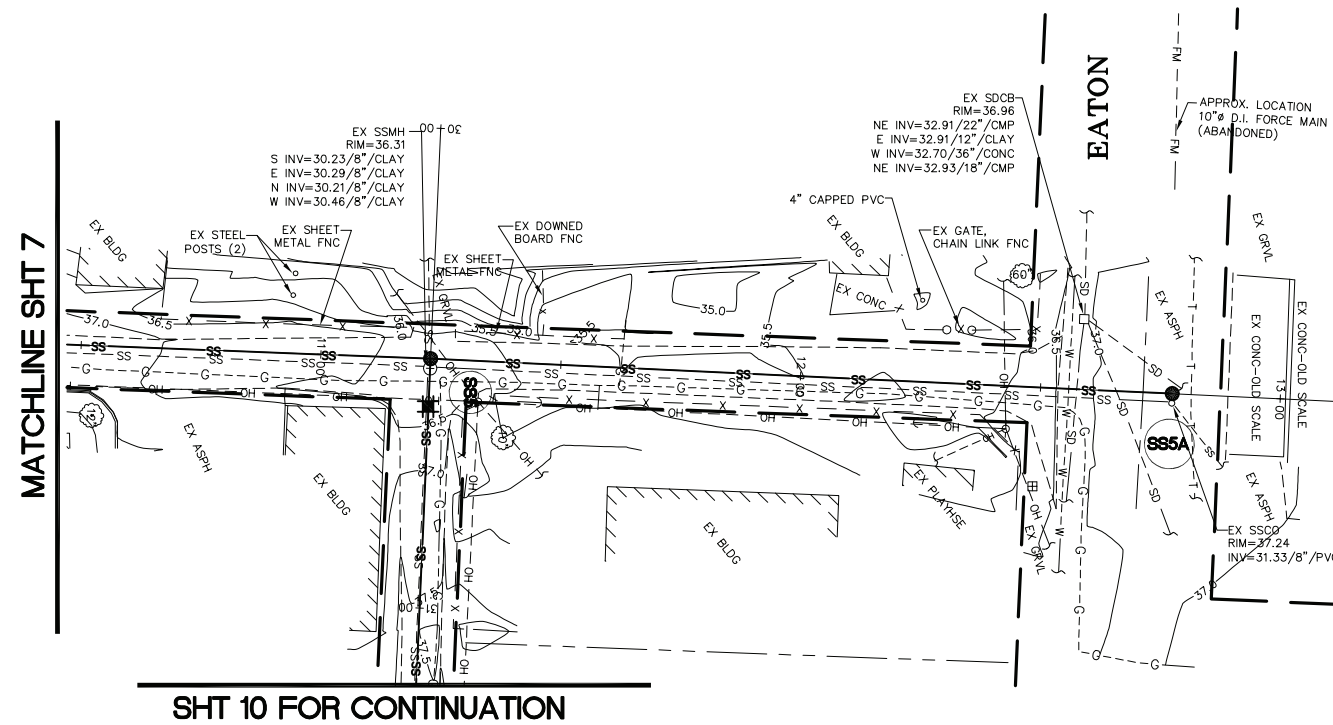
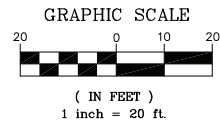
CITY OF FERNDALE
2095 MAIN ST
FERNDALE, WA 98248

**EATON, SOMERSET, WILLARD AND
WASHINGTON SEWER PROJECT**

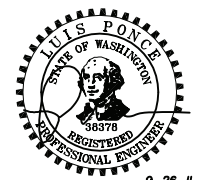
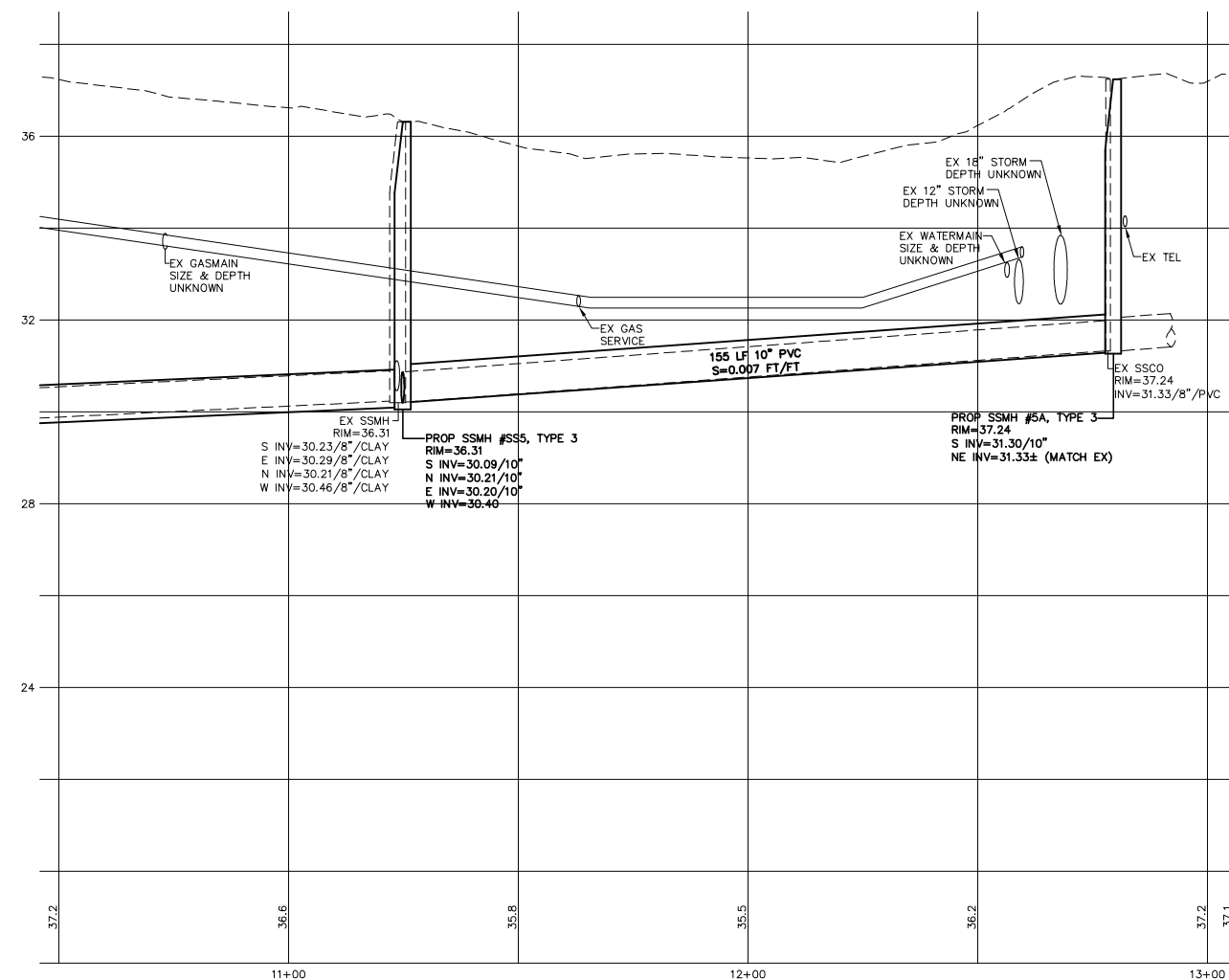
JOB# / DWG	11007.1 AD1	SP2
SCALE	H: 1" = 20' V: n/a	

DATE	9-26-11
------	---------

5 of 12



NOTE: UNLESS NOTED, SIDE SEWER LOCATIONS UNKNOWN. CONTRACTOR TO DETERMINE SIDE SEWER LOCATIONS AS THE NEW MAIN IS INSTALLED. FOR BASE BID, NEW SIDE SEWERS SHALL BE INSTALLED FROM NEW MAIN TO RIGHT OF WAY.



9-26-11

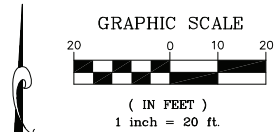
DESIGNED BY LP	 <div>REICHARDT & EBE ENGINEERING, INC. CONSULTING ENGINEERS PO Box 978 423 Front St, Ste 201 Ph (360) 354-3687 Lynden, Washington 98264 Fax (360) 354-0407</div>	1	9-26-11	REVISE PROP SS ALIGNMENT - ADDENDUM 2	LP	CITY OF FERNDAL 2095 MAIN ST FERNDAL, WA 98248	EATON, SOMERSET, WILLARD AND WASHINGTON SEWER PROJECT PROPOSED SANITARY SEWER BASE BID	JOB# / DWG	DATE
DRAWN BY LMC		9-19-11	ADDENDUM 1	LP	11007.1 AD1 SP2			9-26-11	
CHECKED BY LP		NO.	DATE	BY	SCALE			SHEET	
				REVISION				H:1"=20' V:1"=2'	8 of 12



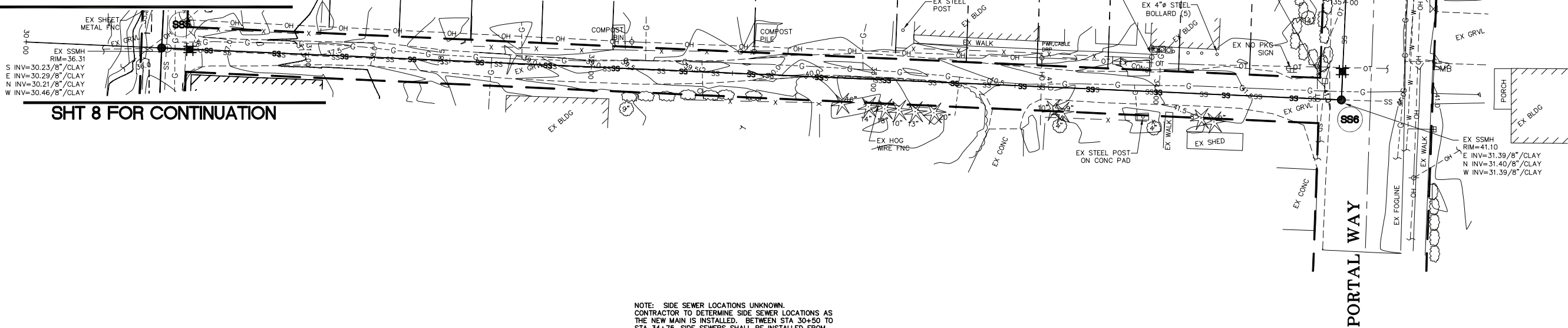
PORTAL WAY



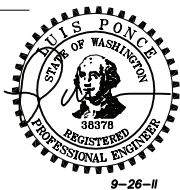
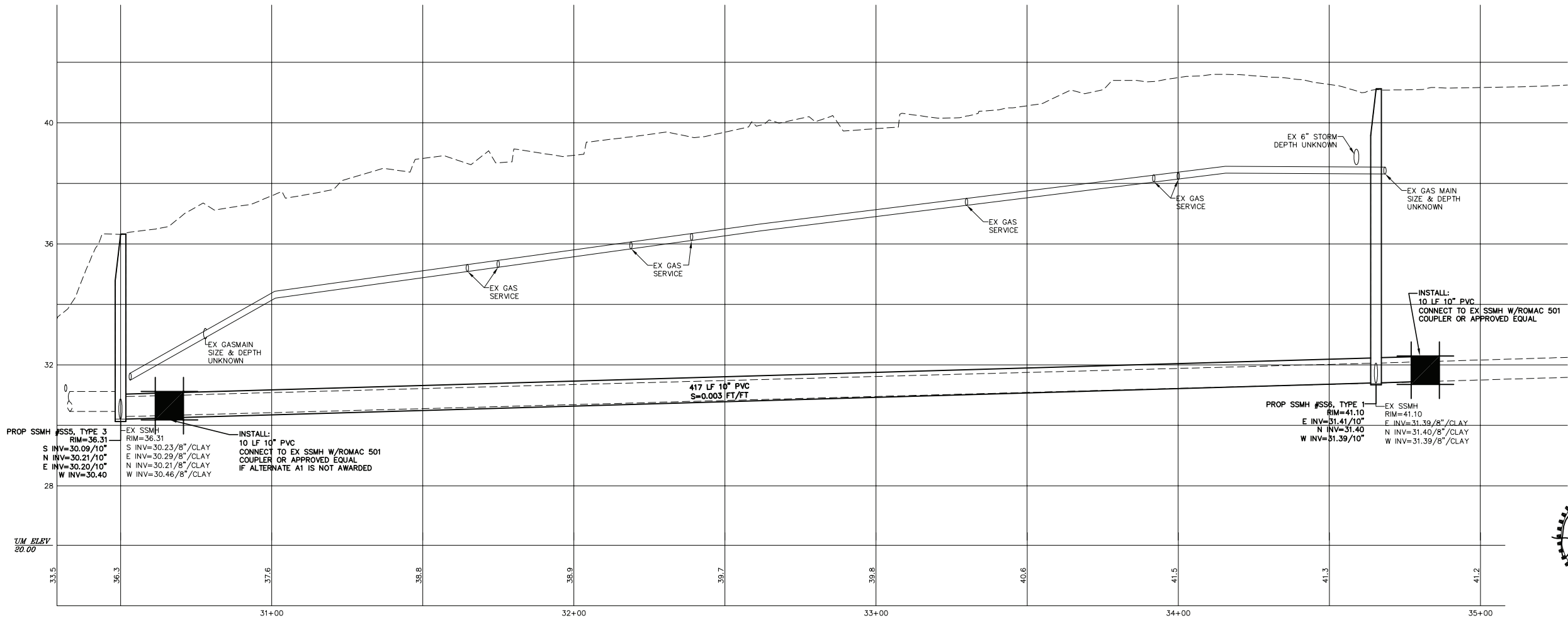
C:\Projects\11007\dwg\ADDENDUM 1 9-9-11\SP2.dwg, N ALLEY, 9/26/2011 11:05:03 AM



SHT 8 FOR CONTINUATION



NOTE: SIDE SEWER LOCATIONS UNKNOWN.
CONTRACTOR TO DETERMINE SIDE SEWER LOCATIONS AS
THE NEW MAIN IS INSTALLED. BETWEEN STA 30+50 TO
STA 34+75, SIDE SEWERS SHALL BE INSTALLED FROM
THE NEW MAIN TO THE RIGHT OF WAY.



DESIGNED BY
LP
DRAWN BY
LMC
CHECKED BY
LP



REICHHARDT & EBE
ENGINEERING, INC.
CONSULTING ENGINEERS
PO Box 978 423 Front St., Ste 201
Lynden, Washington 98264

Ph (360) 354-3687
Fax (360) 354-0407

1

9-26-11

REVISE PROP SS ALIGNMENT - ADDENDUM 2
ADDENDUM 1

NO.

DATE

REVISION

LP

LP

BY

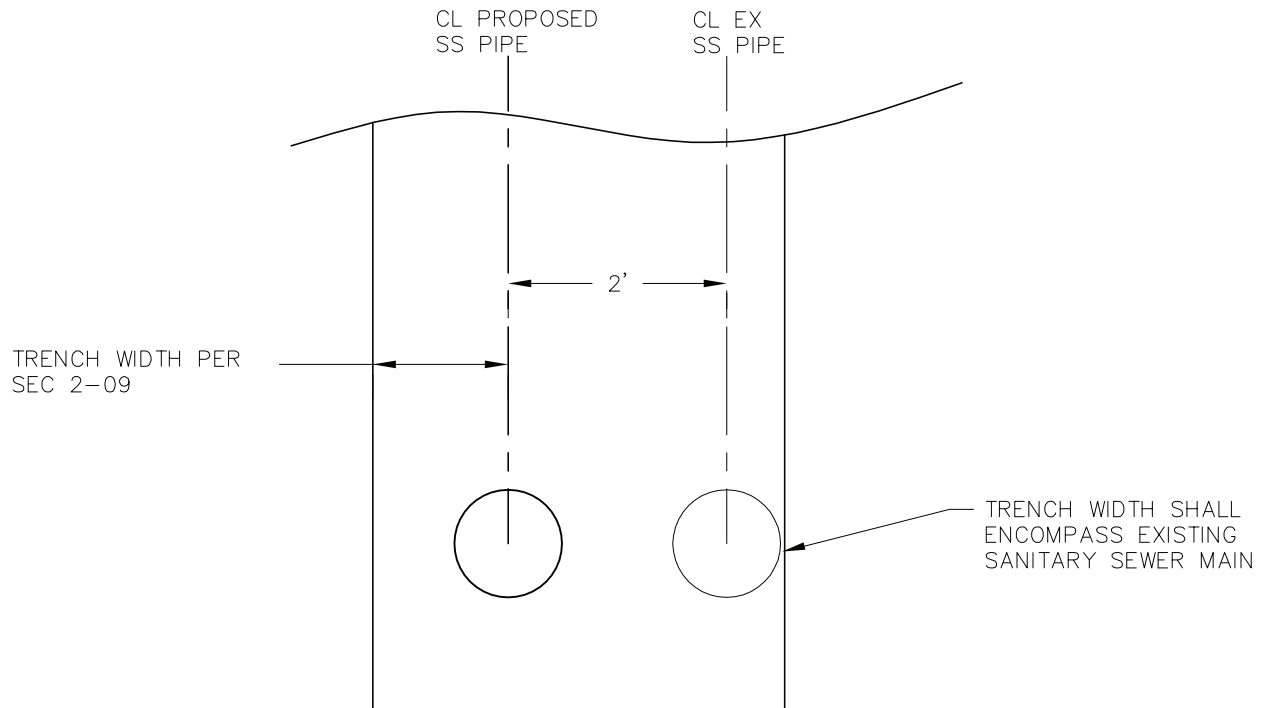
CITY OF FERDALE
2095 MAIN ST
FERDALE, WA 98248

EATON, SOMERSET, WILLARD AND
WASHINGTON SEWER PROJECT
PROPOSED SANITARY SEWER ALTERNATE A1

JOB# / DWG
11007.1 AD1 SP2
SCALE
H:1"=20' V:1"=2'

DATE
9-26-11
SHEET
10 of 12

Z:\Projects\11007\dwg\ADDENDUM 1 9-9-11\DET2.dwg, DET, 9/26/2011 10:57:50 AM



NOTE:
OTHER TRENCH DETAILS NOT
SHOWN FOR CLARITY

TYPICAL TRENCH SECTION STA 3+00 TO 12+75

NTS



REICHHARDT & EBE
ENGINEERING, INC.

423 Front St, Ste 201 Lynden, WA 98264
Phone 360-354-3687 FAX 360-354-0407

**EATON, SOMERSET, WILLARD AND
WASHINGTON SEWER PROJECT**

9-26-11

ADDENDUM 2

11007.1 AD1 DET2

Eaton, Somerset, Willard, and Washington Sewer Project No. SS2011-01

Side Sewers

Addendum 2

SS4 to SS5

SS side sewer STA	Size (Inches)	LT	RT	Top	Capped	Notes
08+62.65	4			X	N	Camera could not get through due to uneven joint.

SS5 to SS5A

SS side sewer STA	Size (Inches)	LT	RT	Top	Capped	Notes
11+61.83	4	X			N	
11+89.83	4		X		N	
12+14.83	4	X			N	
12+42.83	4		X		N	
12+53.83	4	X			Y	
12+73.83						SSCO

SS5 to SS6

SS side sewer STA	Size (Inches)	LT	RT	Top	Capped	Notes
31+47.49			X		Y	Camera could not get through from SS5 to STA 31+47 due to blockage.
31+72.49	4		X		N	
31+88.49	4			X	N	
31+96.49			X		Y	
32+32.49	4	X			N	
32+37.49			X		Y	
32+58.49	6	X			N	PVC beyond clay connection.
33+23.49	4		X		N	
33+36.49	6	X			N	
33+54.49	4		X		N	
33+88.49	6			X	N	
33+98.49		X			Y	
34+22.19	4		X		N	